



MarymountManhattan

2012-2013 PRESIDENT'S REPORT



BUILDING EXCELLENCE

SAVE THE DATE

President's Gala Marymount Manhattan College
Monday, April 28, 2014
Gotham Hall, New York City



Tony® and Grammy® Award nominee Frank Wildhorn will be the honoree at the Marymount Manhattan College President's Gala on Monday, April 28, 2014. The celebrated composer, lyricist, and producer has penned songs for the Broadway shows *Jekyll & Hyde*, *Bonnie & Clyde* and *The Scarlet Pimpernel*. He also wrote the hit song *Where Do Broken Hearts Go* for Whitney Houston.

Marymount Manhattan College is proud to announce that the President's Gala Honorary Chairs consists of: Marymount Manhattan College Chairman of the Board of Trustees, James E. Bukcman, and choreographer and director, Jeff Calhoun (Tony and Drama desk winner), director of *Newsies*. Other Honorary Committee members include acclaimed composer/conductor/producer John McDaniel of the *Rosie O'Donnell Show* and Oscar-winning set and costume designer Tony Walton.

The Gala will take place at Gotham Hall on Broadway in the heart of Times Square.

Frank Wildhorn will give a special performance featuring a gathering of his Broadway friends and Marymount Manhattan College alumni and students.

Table of Contents



Message from the President 1
 2012 & 2013 Presidential Galas 2

Advancing the Mission

Sr, Colette Mahoney Remembered 3
 Student Scholars 4
 32
 New College Website Launches 5
 Distinguished Chair Named 11
 Middle States Accreditation 13

Supporting Academic Excellence

Simon Gift Received 6
 Mellon Grant Announced 6
 MMC a JED Campus 6
 Faculty Center Opens 7
 Dean Baker Retires 9
 Marymount Manhattan Best Return on Investment 11
 Commoner Lecture 25
 Rudin Lecture 27

Advancing Academic Excellence

New Faculty Arrive 12
 Professor Rosenfeld at the National Gallery of Art. 29

Giving in 2012 and 2013

Bedford Hills Combined Class Success 10
 FY2012 Statistics 13
 Message from the Chair 14
 FY2012 Statistics 13
 FY2012 Gifts and Pledges 15
 FY2013 Statistics 23
 FY2013 Gifts and Pledges 24
 Board of Trustees, Administration 32
 Masthead 32





Dear Friends,

We are at the end of a busy fall semester at Marymount Manhattan and I wanted to let you know about the many milestones the College has achieved in recent months. As we move forward to face new challenges, we seek to build upon the student-centered mission that has been the foundation of our College for almost seventy-eight years. Like many institutions in higher education today, we strive to be proactive in a changing national environment.

During Family, Friends, and Alumni Homecoming Weekend, we held a ribbon cutting ceremony to celebrate the official opening of our new Faculty Center. The new building, located at 255 East 71st Street is four doors east of our Main campus building. This new facility provides office and conference space for our larger faculty and the students who collaborate with them. This exciting new space is the result of the efforts and contributions of so many, particularly our generous benefactors Judy '03, '13H and Russ Carson, pictured helping me wield the giant ceremonial scissors on the cover of this report. The Carsons' \$3 million challenge grant launched the campaign for this new capital project.

A few days after the ribbon cutting ceremony, we went live with our eagerly anticipated new website. This new site is the result of months of planning and design work and was created to more accurately portray the dynamic energy of Marymount Manhattan, to highlight the accomplishments of our students, and to underscore our unparalleled location. The website is full of information and easily navigated by visitors interested in learning about the MMC community. Please visit the site at www.mmm.edu. I am interested to hear your comments and feedback.

In this report, you will become acquainted with the new faculty members we welcomed to Marymount Manhattan this fall, read about our Middle States re-accreditation, learn about both the Commoner and Rudin lecture series, revisit the President's Gala, explore campus events and student successes. Included are students taking top honors, a new Distinguished Chair, alumni award recipients and a remembrance of a beloved former president of the College, Sr. Colette Mahoney.

This report also details financial information for the College over two years and gives us the opportunity to recognize our benefactors for their unwavering commitment and generosity.

I look forward to seeing you on campus at one of the many events throughout the year, and I will continue to update you about future announcements and milestones that the College achieves. Your help is essential for our continued success. Thank you.

Best wishes,

Judson R. Shaver, Ph.D.
President



2012 75th Anniversary Gala

During a memorable and inspiring evening at the Metropolitan Club, Marymount Manhattan College held its 75th Anniversary Gala on Wednesday, June 6 honoring Nora Moran '06 and the graduates of the Bedford Hills College Program. Proceeds provide support for Bedford Hills College Program. Through this program, Marymount Manhattan College offers college-preparatory courses and courses leading to an Associate of Arts degree in social science and a Bachelor of Arts degree in sociology at the Bedford Hills Correctional Facility, New York State's only maximum-security prison for women.



2013 President's Gala Honors Alumna and Trustee

At the landmark Plaza Hotel on the evening of May 8, Marymount Manhattan alumna and Trustee Gloria Spinelli Bohan '63, was honored at the 2013 President's Gala. Even before entrepreneurship became a buzzword in the business world, Gloria was a dynamic leader and catalyst for innovation, as well as an engaged member of the MMC community. During the College's This is the Day campaign, she established the Gloria Spinelli Bohan Scholarship. Since 1972, she has worked tirelessly to create and successfully build Omega World Travel into a global, top-tier travel management company.



Celebration of Life of former President Sr. Colette Mahoney, RSHM, Ph.D.

A celebration of the life of Colette Mahoney RSHM, Ph.D. was held at the College on Wednesday, October 30th. Marymount Manhattan College's fourth president, who served for twenty-one years and received the President's Medal in 1988, died peacefully on the 14th day of June, 2013.

Alumni, friends, RSHM, and colleagues were invited to attend a Mass at St. John the Martyr Church before gathering in the Theresa Lang Theatre for a memorial commemoration.

Following an invocation by Kathleen Fagan, RSHM, Provincial Superior, Marymount Manhattan alumni, colleagues and friends shared their reflections of Sr. Colette. President Judson Shaver spoke of Sr. Colette's incredible legacy in the field of higher education at Marymount Manhattan and nationwide.

Kathleen Burke '72, and Rose Calabrese Jaworecki '86 highlighted their experiences with Sr. Colette over the decades, and Dean Emeritus Peter Baker and former Theatre faculty member Gail VanVoorhis shared warm remembrances. Theatre Arts major Hayley Lampart '16 sang a stirring rendition of *Amazing Grace*.

Alumna and former colleague Helen Lowe '55 spoke for many when she said, "Let's ask ourselves what, in such an exquisite life as Colette's, should we admire and emulate? What lessons should we learn? It's this — you have to have faith...in faith. In the face of doubt, you have to believe fearlessly, as Colette did, in fighting for a cause that is just and good."

The program concluded with a video by Arthur D. Lubow, President of AD Lubow, a close friend and admirer of Sr. Colette. Marilyn Wilkie, Vice President for Institutional Advancement, announced the newly established *Sr. Colette Mahoney Science Research Grant for Faculty-Student Collaboration* at Marymount Manhattan College to honor Sr. Colette's passion for the sciences, a fund that has already raised over \$20,000.

A lively reception followed in The Commons where many who knew Sr. Colette during her tenure as Marymount Manhattan President reminisced about her leadership and uncommon personal warmth. As Ms. Lowe put it, "In life, if you're lucky, you'll find one person who is something of a compass. For me, that was Sr. Colette."



Fulbright Awards U.S. Student Grant to 2013 Graduate

Annabelle Royer '13 headed to Taiwan in August, her first stop following graduation, thanks to a prestigious and highly sought-after Fulbright U.S. Student Award. Annabelle, a double-major in English and World Literatures and Secondary Education, earned the Award and an English Teaching Assistantship as the result of her studies at Marymount Manhattan College and a rigorous selection process.

Annabelle studied three languages — including French, Spanish, and Mandarin — and intends to become fluent in Mandarin during her eleven months abroad. She also plans to study the educational differences between Taiwan and the United States with her Fulbright experience complementing her time spent student teaching here.



Annabelle Royer, Fulbright Teaching Assistant in Taiwan, was also commended with an honorable mention in her academic field, Teacher Education, at MMC's 2013 Commencement

2013 Graduate Invited to Join Teach For America

Every year, tens of thousands of graduating seniors from schools across the country apply for one of Teach For America's competitive posts, and this year, Marymount Manhattan College student Marie Tronsor '13 can count herself among the fewer than 15% who earned one.

Marie, a double-major in History and Education, landed the prominent teaching fellowship through her years of commitment and hard work. Her experience, including student teaching as well as academic study of the history of education, culminating in her senior thesis on the 1965 Education Act, has prepared her for the challenging two-year teaching tour.

Student Named Jeanette K. Watson Fellow

In honor of her hard work and dedication, the Thomas J. Watson Foundation named Alicia Perez '16 as a member of its Jeanette K. Watson Fellowship Class of 2016. The award will enable Alicia and fourteen other students across the city to spend the next three summers interning, both in New York and abroad.

Alicia, who double majors in Communications Arts and Journalism, plans to use the internship time to further exercise her reporting, writing, and editing skills as a journalist.

Ashley Feith '13 Wins NAFSA's Title of 2012 Student Diplomat



A video by recent graduate Ashley Feith took top honors in the NAFSA Student Diplomat Video Contest, making Ashley the NAFSA 2012 Student Diplomat. Ashley's video documented her experience abroad at the American College in Thessaloniki, Greece, as a Niarchos Foundation Exchange Student.

A double-major in International Studies and Philosophy and Religious Studies, Ashley shot footage of people, places, and food, which she edited into a three-minute video for the contest.

Alongside all the bright colors and fascinating locations, Ashley's insightful commentary gives a taste of her many eye-opening experiences abroad, as well as the lessons she brought home that make her even more capable, curious, and open-minded than she was before. Her experiences abroad also peaked her interest in a new career direction — international conflict resolution. For winning the contest, Ashley also received a \$1000 travel voucher.

New Website Launches

On October 29, Marymount Manhattan went live with a completely redesigned website, much to the excitement of the entire college community. President Judson R. Shaver held a virtual ribbon cutting in the Commons before a gathering of faculty, staff, and students, revealing the new homepage.

President Shaver acknowledged the power of a strong, interactive website: "This is the method used by the vast majority of potential students, their families, and benefactors of Marymount Manhattan to connect with us. The new site is our opportunity to invite talented and gifted students from all over the world to discover Marymount Manhattan, and to visualize themselves here in the middle of the most exciting city in the world." President Shaver expressed his thanks to the entire College community, in particular the IT staff and the web committee, for their dedication.

The College's new website was unveiled during Family, Friends, and Alumni Homecoming Weekend.



Middle States Accreditation Reaffirmed

Following a highly favorable review by an evaluation team which visited the Marymount Manhattan, in May 2012, on November 15, 2012 the Middle Commission on Higher Education reaffirmed the College's accreditation. The College was found to be in compliance with all 14 Middle States standards. Further, the evaluation team noted 24 "significant accomplishments" of the College. Among them was the creation of the Center for Teaching Innovation and Excellence, the College's highly successful *This is the Day* campaign, significant capital improvements, transparent governance, the expansion of internships, and the Career Services Office, the revision of General Education, and the successes of the HEOP, Academic Access, Bedford Hills, and the Learning Communities programs. The team was particularly impressed with the degree to which so many stakeholders — students, faculty, staff, and trustees — understood and embraced the College's mission.

The Simons Family Supports Academic Access

In May 2013, Marymount Manhattan College received a generous grant to support *Academic Access*, a program which provides scholarships for students who require additional accommodations to achieve academic success. This extraordinary gift, from Jim and Marilyn Simons, provides \$250,000 in student grants over five years. During fall semester 2013, the first ten students received scholarship support toward their tuition, with each student receiving \$5,000.

College can be challenging for many students; it can be particularly challenging for students with learning disabilities. To help, *Academic Access* at Marymount Manhattan offers separate/alternative forms of testing, extended test time, assignment of note-takers, assistive technologies, and other accommodations. In addition, the program provides tutoring services, counseling, advisement, and priority registration. Learning specialists help develop skills and strategies for coursework, and talk about attitudes and behavior necessary for success.

Academic Access is specifically designed to foster academic success. Through multifaceted support, students with learning difficulties are able to handle the Marymount Manhattan curriculum along with their peers and classmates.

Support for *Academic Access* from the Simons ensures that Marymount Manhattan provides students with learning disabilities with the resources they require to achieve their academic potential, find meaningful careers, and lead independent, rewarding lives.

MMC Receives Prestigious \$250K Mellon Grant

Marymount Manhattan College learned in August that it is the recipient of a \$250,000 grant from The Andrew W. Mellon Foundation. This two-year grant will support the revitalization of the College's general education curriculum and enrich the school's exceptional liberal arts education. Marymount Manhattan will use the grant to establish new systems that will encourage faculty to develop, revise and implement general education courses over the next two years. By overhauling and improving the liberal arts core that distinguishes Marymount Manhattan, the College will strengthen its efforts to produce well-rounded, educated adults who are both lifelong learners and global citizens. "This \$250,000 grant will support our faculty members as they examine content, methods, and formats to hone their teaching, carefully and systematically assess what and how students are learning, and engage in curricular revision and innovation," said President Judson R. Shaver, Ph.D. "We are deeply grateful to The Andrew W. Mellon Foundation."

Marymount Manhattan Leader in Return on Investment

A recent study of 472 New York colleges, AffordableCollegesOnline.org, recognized Marymount Manhattan for its top lifetime "return on investment" (ROI). The highly methodological survey of schools and their alumni, the online resource for college-bound students placed MMC among the colleges with the best proven ratios of low student cost to high graduate income.

Using comprehensive data, the study covered both public and private institutions, looked at the earnings of graduates over a 30-year period, and compared those earnings to the income of adults without a degree.

Upon learning of the recognition in August, President Judson R. Shaver pointed out that Marymount Manhattan enriches the lives of its students in more ways than one.

"Our graduates are transformed by a breadth and depth of learning that prepares them for a fully functioning citizenship and for leadership roles in a wide variety of arenas," he said.

"And, because we keep our costs low and our students succeed

professionally, an MMC education is literally enriching, too."





New Faculty Center Celebrated with Ribbon-Cutting Ceremony

An official ribbon cutting ceremony was held on October 26 to open Marymount Manhattan College's new Faculty Center during Family, Friends, and Alumni Homecoming Weekend.

Students, faculty, staff, alumni, parents, and neighbors looked on as the ribbon was cut with giant ceremonial scissors by President Judson R. Shaver, Congresswoman Carolyn Maloney, Russ and Judy '03, 13H Carson, and James E. Buckman, Chairman of the Marymount Manhattan College Board of Trustees.

"This unique opportunity to house the Faculty Center within steps of our main campus buildings offers us the chance to grow as a college while maintaining a sense of community highlighting the close relationship between our faculty and students," said President Shaver.

The Carsons generously supported the most successful capital campaign in the history of our College, *This is the Day*, with an initial \$5 million gift and then a pledged an additional \$3 million challenge grant to support the Faculty Center. The Carsons leadership gift ignited the support for the Faculty Center. All contributions to this new campus building will be matched by the Carsons.

As a remembrance of the event, a framed architectural rendering of the building was presented to Russ and Judy by President Shaver. The rendering included pieces of the black and white marble tile from the foyer inside the building, which is evocative of the black and white in the main building which was constructed at the turn of the century.

The new building, purchased by the College in 2010, was meticulously redesigned to create new and efficient space for 29 Marymount Manhattan faculty members in the Humanities and Social Sciences, while carefully preserving the historic exterior so characteristic of the College's Upper East Side neighborhood. The Faculty Center provides offices for faculty as well as meeting areas for the entire College community.

Following the ceremony, everyone was invited inside for a toast and tours of the building. The Carsons were delighted to join others on a tour with Division of Humanities Chair Peter Naccarato, one of the Faculty Center's newest occupants.





“We hope our support inspires you to do the same and become a partner in this important initiative as we move forward and embark on our next 75 years of success for all students” — Judy & Russ Carson

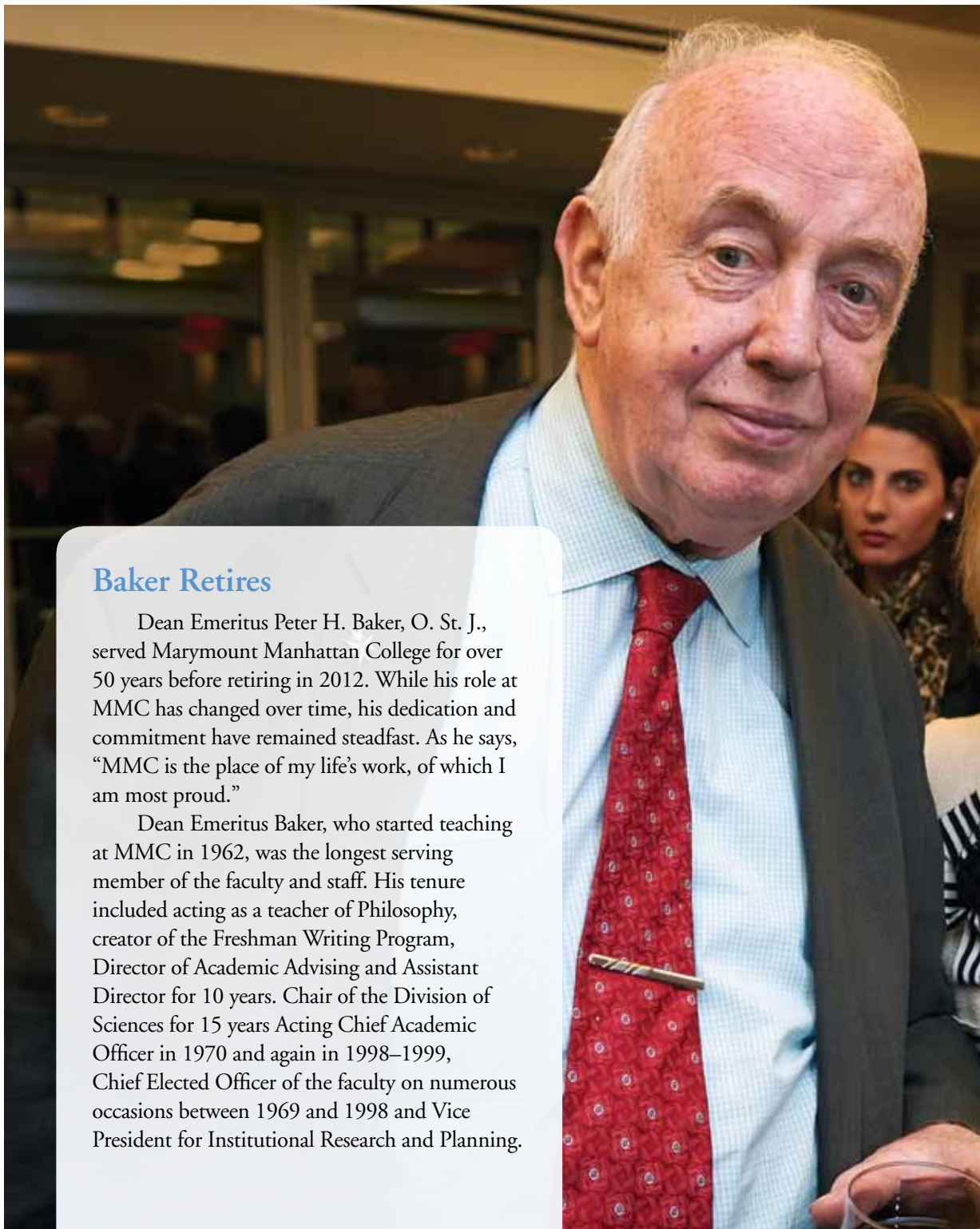


Division of Accounting and Business Management Scholarship Reception

On Tuesday, November 5, 2013, Marymount Manhattan College celebrated Business scholarship recipients at a reception in the campus' new Faculty Center. Students were joined by faculty, alumni, and staff to celebrate academic achievement among business majors and to express gratitude to generous scholarship donors.

Mark Finkel and Helen Metzger of the Stanley Finkel Endowed Scholarship Fund attended as guests of President Judson Shaver. Several individuals who support the Dr. Marvella S. Colby Endowed Scholarship Fund also attended, including Hope Knight '85 (MMC Trustee), Michelle Kilic '93, Peggy Fung '03, and Diana Jacobs Kalman, a former faculty member within the Business Division. Donors expressed their admiration for MMC's talented, hard-working students, and scholarship recipients were deeply grateful for the opportunity to thank the donors in person.

Nina Carter '16, spoke on behalf of the students to convey their appreciation for scholarship aid. President Shaver spoke about the importance of financial support for students: "I would like to add my sincere gratitude for your financial support to our extraordinary students. Your contribution means so much to so many, and helps to close the financial gap in earning a high-quality education."



Baker Retires

Dean Emeritus Peter H. Baker, O. St. J., served Marymount Manhattan College for over 50 years before retiring in 2012. While his role at MMC has changed over time, his dedication and commitment have remained steadfast. As he says, "MMC is the place of my life's work, of which I am most proud."

Dean Emeritus Baker, who started teaching at MMC in 1962, was the longest serving member of the faculty and staff. His tenure included acting as a teacher of Philosophy, creator of the Freshman Writing Program, Director of Academic Advising and Assistant Director for 10 years. Chair of the Division of Sciences for 15 years Acting Chief Academic Officer in 1970 and again in 1998–1999, Chief Elected Officer of the faculty on numerous occasions between 1969 and 1998 and Vice President for Institutional Research and Planning.

Combined Class at Bedford Hills Correctional Facility

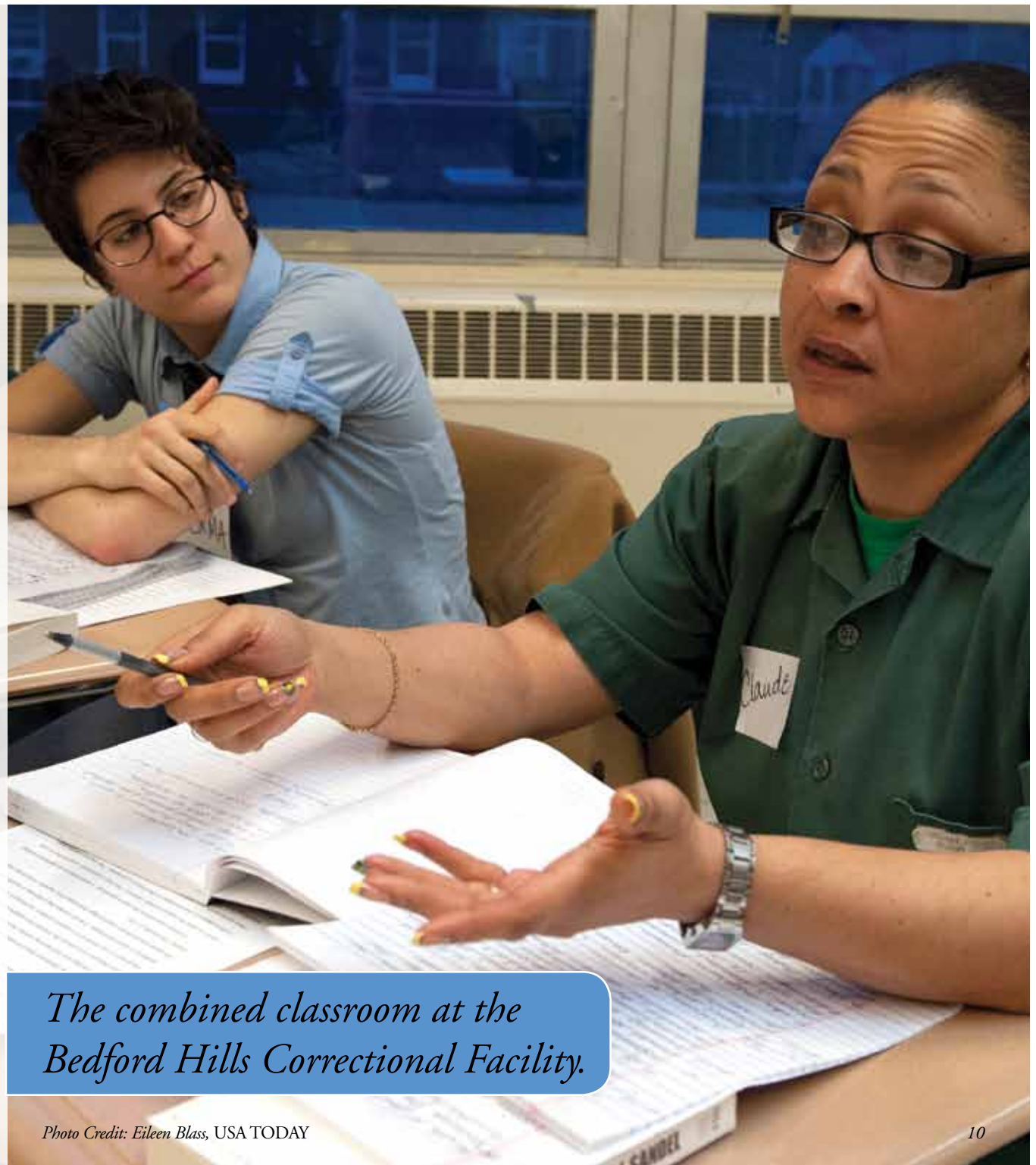
In a May 2013 Faculty Council meeting, Assistant Professor of Sociology Michelle Ronda was awarded the C-TIE Innovative Teaching Award for her work on a combined class taught at the Bedford Hills Correctional Facility.

For fifteen years, Marymount Manhattan has been offering classes and degrees to the inmates of Bedford Hills Correctional Facility. Under the direction of Ronda, students from Marymount Manhattan's main campus at 71st Street marked another milestone for the program — its first “combined classroom,” in which students from the main campus studied together with the women at Bedford Hills.

In keeping with the College's commitment to giving back to the community, over 150 inmates have earned degrees, and over 1,200 have earned college credits since the program's inception. In 2004, the program became a Marymount Manhattan extension campus, making all the enrolled prisoners official members of the student body.

For the pilot version of the combined class, Professor Ronda taught “Theories of Justice,” an upper division course from Marymount Manhattan's new Justice Studies minor. The course, which explores the history, theory and applications of a variety of models of justice, met once a week at the women's prison.

This unique course was featured in a *USA Today* article and video in Spring 2013.



The combined classroom at the Bedford Hills Correctional Facility.

Photo Credit: Eileen Blass, USA TODAY



Marymount Manhattan Named JED Campus

*Recognized for Focus on Mental Health,
Emotional Well-Being of Students*

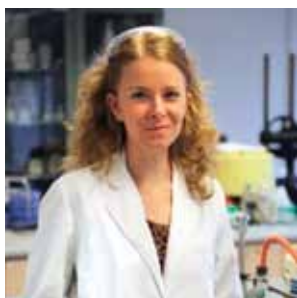
In October, Marymount Manhattan received the inaugural JedCampus Seal for the quality and breadth of programs promoting mental health and suicide prevention.

The seal is the official endorsement of the Jed Foundation, whose mission is to safeguard the emotional health of America's 20 million college and university students. To earn this endorsement, Marymount Manhattan submitted a voluntary self-assessment of its campus programs, using a confidential online questionnaire covering such areas as strategic planning, identifying at-risk students, increasing help-seeking behavior, providing mental health services, and developing life skills and promoting social networks.

"Marymount Manhattan takes its student mental health and suicide prevention programs very seriously," said Counseling and Wellness Center director Paul Grayson. "I'm delighted to have our efforts recognized by the Jed Foundation's JedCampus Seal."

Marymount Manhattan is among only 30 Colleges and Universities in the country to be identified as having comprehensive mental health programming on campus. The JED foundation's approach is supported by the American College Counseling Association, the American College Health Association, the National Council on Community Behavioral Healthcare, and the National Alliance on Mental Illness.

Upon learning of the foundation's endorsement, Carol Jackson, Vice President for Student Services and Dean of Students, reaffirmed the College's steadfast focus on the emotional health of students, and thanked Dr. Paul Grayson for his leadership of the Counseling and Welfare Center. "CWC has created services that meet the highest level of care, particularly during a crisis," she said.



Distinguished Chair

In April, Alessandra Leri, Ph.D., Associate Professor of Chemistry, was awarded a Distinguished Chair — one of the highest honors that Marymount Manhattan College bestows on a faculty

member. The award recognizes dedication to teaching excellence and prolific scholarly pursuits.

President Judson Shaver, who introduced the Distinguished Chair Program to the College in 2008, said in announcing the selection, “Dr. Leri embodies the intent of the program with her tireless work in her field, her skill in inspiring students to learn and apply the knowledge they’ve gained from her classes, and her demonstrated ability to engage undergraduates in graduate-level and groundbreaking scientific research. Being a Distinguished Chair will enhance and support her ambitious scientific agenda and research with students.”

During her three years as Distinguished Chair, with the accompanying research funding and reduced teaching load, Professor Leri plans to devote the extra time and resources to scholarly pursuits. She explains, “I intend to make advances on several research projects, with the goals of publishing four peer-reviewed scientific papers and presenting results at three international conferences.”

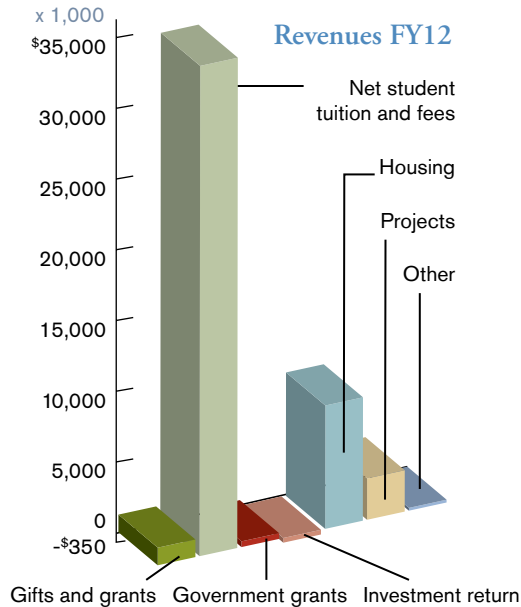
Due to Professor Leri’s efforts, as well as those of the Natural Sciences Department as a whole, Marymount Manhattan College has a growing reputation as an exemplar of closely mentored undergraduate research in science. Leri joined the Marymount Manhattan College faculty in 2007 and since then has developed a thriving research program in molecular environmental science with undergraduates in the Biology major. Her research interests lie in organic geochemistry, particularly the biogeochemical cycles of halogens.



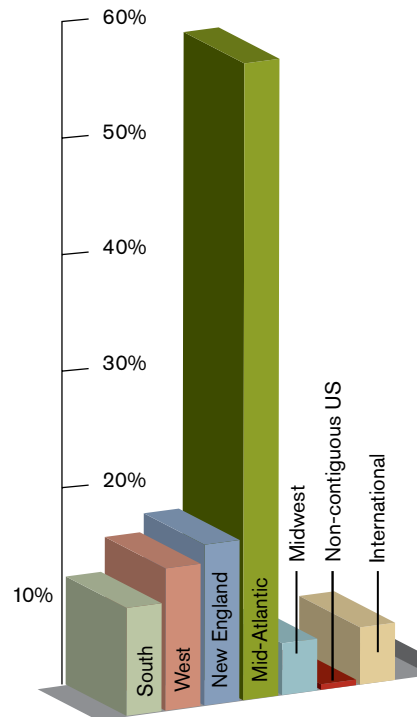
NEW FULL-TIME FACULTY 2013

*Eight new professors joined the full-time faculty in September 2013.
Left to right: Edrex Fontanilla, Trista Wang, Dan Hunt, Sarah Nelson Wright,
Sydney Maresca, Mark Bresnan, Tahneer Oksman and Vinod Changarath.
Read more about our new professors on the pages that follow.*

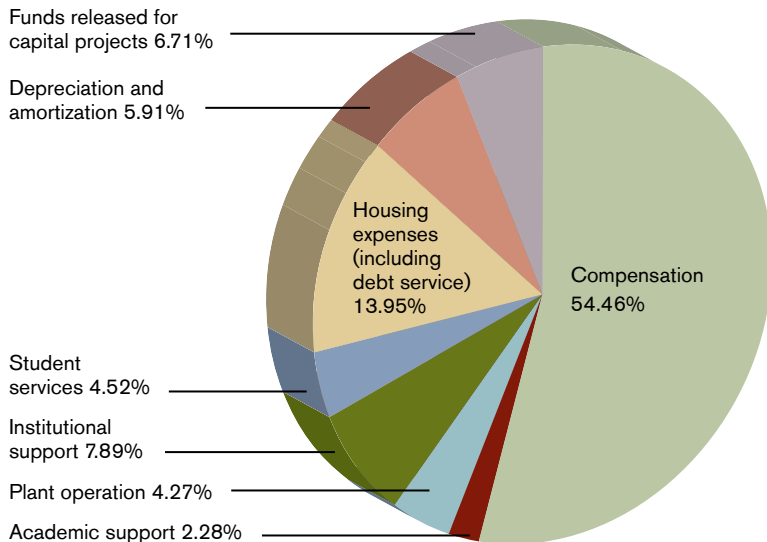
FINANCIAL STATISTICS FY2012



FY12 enrollment totals by geographic location



Expenditures FY12



REVENUES FY12

Gifts and Grants	\$1,296,494
Net Student Tuition & Fees	\$36,080,961
Tuition and Fees	\$46,003,803
Less: Student Aid	(\$9,922,842)
Government Grants	\$421,957
Investments	(\$345,669)
Housing Revenue	\$9,078,958
Funds Released by the Board of Trustees for Capital Projects	\$3,044,815
Other	\$207,974
Total Revenue	\$49,785,490

EXPENDITURES FY12

Compensation	\$28,044,043
Academic Support	\$1,174,734
Student Services	\$2,329,962
Institutional Support	\$4,068,559
Plant Operations	\$2,198,834
Housing Expenses (including debt service)	\$7,186,749
Depreciation and Amortization	\$3,453,397
Funds Released by the Board of Trustees for Capital Projects	\$3,044,815
Total Expenditures	\$51,501,094

BALANCE (\$1,715,604)



Message from the Chair

It's an exciting time at Marymount Manhattan College and I am proud to serve as chair of our Board of Trustees. I am pleased to welcome the newest members to Trusteeship: Linda Basilice-Hoerrner '71, Carol Berman '13, Michael Materasso P '14, Susan Gardella, RSHM '79, Barbara Loughlin '70, and Cecilia Tudela-Montero '90, P '13. I thank them for their leadership and dedication to advancing the mission of Marymount Manhattan College.

In October, we saw a dream come to fruition as President Shaver, Russ and Judy Carson, Congresswoman Carolyn Maloney and I cut the ribbon for the new Faculty Center. The College purchased the property in 2010 and renovated the existing residential space into a new state-of-the-art home for 29 members of our distinguished faculty. This new campus building freed up much needed space in the Main and Nugent buildings for student use.

This new Faculty Center initiative was led by the generosity of Judy and Russ Carson. The Carsons played a leading role in the success of This is the Day, the most successful comprehensive fundraising campaign in the history of Marymount Manhattan College, by giving the largest individual gift in the history of our College. Upon the successful completion of this fundraising effort, the Carsons then pledged an additional \$3 million challenge grant to spark the creation of the new Faculty Center.

In the near future, we are looking forward to completing a brand new residence hall in Cooper Square, which will accommodate 272 students and is slated to open Fall 2015.

Your support helps the College to flourish and grow. We are very grateful to each one of you for your financial support. Thank you for your ongoing commitment and devotion to Marymount Manhattan College.

*James E. Buckman
Chairman of the Marymount Manhattan College Board of Trustees*

Mark Bresnan, Ph.D.,
Assistant Professor
of Academic Writing



Dr. Bresnan received his doctoral and Masters degrees in English from The University of Iowa after having completed his B.A. in English with

Distinction from St. Olaf College. He has nine years of college teaching experience, which include courses in rhetoric and composition, developmental writing, science writing, and American literature. Recently he taught Expository Writing as a lecturer at New York University. In addition to his instructional experience, Dr. Bresnan has a significant record in administration, collaborative instruction, and writing across the curriculum. While at the University of Iowa, he was recognized with the Gerber Award for Excellence in Teaching.

2012 GIFTS & PLEDGES

The following Gifts and Pledges list includes individuals, organizations and foundations that have made gifts and/or pledges to the College from July 1, 2011 to June 20, 2012.

CHAIRMAN'S CIRCLE \$50,000+

Armen A. and Janette Avanesians
Gloria Spinelli Bohan '63 and
The Dan and Gloria Bohan Foundation
Mr. and Mrs. James E. Buckman
Judith M. '03 and Russell Carson and
The Carson Family Charitable Trust
Debbie and Marc Cooper P'15
Samuel Freeman Charitable Trust
Anne C. Flannery '73
The Gluckhaus Foundation
Mary Ellen McNiece '91 and
Gates Helms Hawn and
the Gates Helms Hawn Foundation
Mr. and Mrs. Paul C. Lowerre '81 and
The Lowerre Family Charitable Trust
Constance Nugent McQuade '54 and
The Joseph C. Nugent Family
Charitable Trust
Natasha Pearl and Richard R. Stowe and
the Stowe Family Foundation
U.S. Department of Education
Lucille Zanghi and James Dow P'11

PRESIDENT'S CIRCLE \$20,000–\$49,999

Anonymous
Aramark Corporation
Richard S. Berry and Lucy A. Commoner
The Achelis and Bodman Foundation
Educational Housing Services
Kathleen Ryan O'Grady '77
The Pumpkin Foundation
The Selz Foundation, Inc.

DEAN'S CIRCLE \$10,000–\$19,999

Aramark Management Services, L.P.
Arthur Williams Residuary Trust
Kathleen '65 and George Austin and
The George E. & Kathleen E. Austin
Foundation
Dean Peter H. Baker
James F. and Alicia P. Bendernagel '73
Arun Bhatia and The Arun I &
Asmita Bhatia Family Foundation /
Cooper and 6th Property, LLC
Madeleine D. Burns '84 and
The L. W. Frohlich Charitable Trust
David Corvo and Michele Willens P'15
Robert F. Dall

Ginger Lyons de Neufville '70 and
Richard de Neufville
Helen Demetrios '73
Mary Francina Golden and
Kenneth Handal P'16
Edward and Mary Twomey Greason '86
Kathleen Monahan Gregg '61
Marsha '67 and Carl Hewitt and
The Carl and Marsha Hewitt
Foundation, Inc.
Willis and Nancy King and the
Willis and Nancy King Foundation
Donna Ensign Marshall '83 and
The Marshall Family Foundation, Inc.
Morgan Keegan and Company, Inc.
National Endowment for the Arts
John and Sarah O'Connor P'15 and
The Brown Foundation of Houston
Omega World Travel
Lisa Perry '98 / Perry Capital
Marjorie Porter-Kuhn '86
Margaret Mahony Prowse '61
The Rudin Foundation, Inc.
Helyn Quinn Waldorf '50 and
The Waldorf Family Foundation

LEADERSHIP CIRCLE \$5,000–\$9,999

Anonymous
Barnard College
Mr. and Mrs. Kenneth L. Fishel and the
Fishel Family Charitable Foundation
Gerard B. Tracy Associates
Gorton and Partners, LLC
James B. Hornor and The Herman &
Henrietta Denzler Charitable Trust
KPMG, LLC
Anna Hayes Levin
Honorable Sallie Manzanet-Daniels '85
and Honorable Randy A. Daniels
Louis A. Martarano
Barbara Martinsons
McGowan Builders, Inc.
Roy Miller
New York State Department of Education
Michael and Andrea G. Norkus P'11
Puppies Behind Bars
Religious of the Sacred Heart of Mary
Rowe Family Foundation
Chris Lee Stafford, Esq. '99
Cecilia Tudela-Montero '90 and
Fernando Montero P'13
Angela Vallot

GRIFFIN CIRCLE \$1,000–\$4,999

Dr. and Mrs. Peter X. Adams P'12
Katerina Alevizaki-Dracopoulos '02
American Society For Biochemistry and
Molecular Biology, Inc
Carolyn M. Wonsicki Angelo '77 *
Anonymous (2)
Max G. Ansbacher
Aramark Uniforms and Career Apparel LLC
Katherine Fontanetta Bonomo '61
Mary Ellen Curtin Bradshaw-
Weisbuch, M.D. '60 and the
Weisbuch-Bradshaw Aid Fund
Kathleen M. Burke, Esq. '72
Mr. and Mrs. Thomas M. Byrnes P'12
Paul L. Ciraulo P'07
Thomas C. Clark and the Fairfield
County Community Foundation, Inc.
Elizabeth Clarke and The Elizabeth
Clarke Charitable Fund
Congregation Emanu-El of the
City of New York
Joanne Homsy Curi '64
Ana P. de Castro Souza and
Roberto Martins de Souza P'15
Gina M. DeMayo Goodenough '01
Mr. and Mrs. Robert DeSalvio P'15
Mariana Buckley Duncan '64
Fay Brand Elliott '87
Irene Farrelly '72
Alice Riley Finley '79, P'93
Marybeth Hession Flachbart '80
French American Cultural Exchange (FACE)
General Plumbing Corp.
Lila T. Gold
Maureen Brandon Goldsborough '66
and The Charitable Foundation of
the Burns Family, Inc.
Julianne Thompson Grace '59
Dr. Maureen Cahill Grant '60
Edward and Cynthia Grebow
Barbara McIntyre Hack '73
Marsha '67 and Carl Hewitt and The
Carl and Marsha Hewitt Foundation, Inc.
Maureen Dunn Hocker '66
Lisa Tachick Hooper '95
Eileen Byrne Hughes '72
Patricia Crowley Hyland '68
Marjorie L. Ihrig '57
Eleanor Maiella Imperato '68
Mr. Bailey W. Jackson

Carol L. Jackson and Emile Schreiber
Hope D. Knight '85
KPMG, LLC
Maureen McManus Lally '60
Patricia Jonas Laufer '85
Dr. and Mr. Kathleen A. LeBesco
Aleathia Lee '83 and Once for All, Inc.
Lois Montagna Libretti '68
Frederick Loewe Foundation
Barbara A. '70 and
Gerald M. Loughlin, M.D.
Helen T. Lowe '55
James H. Lynch
Patricia Parisi Magliocco '63 /
Bulldog Ventures, Ltd.
Michele Maher '88
Maryann Paradise Mastoloni '52
Michael and Alice Materasso P'13
Mr. Gerard A. McCallion and
Dr. Regina S. Peruggi
Joan McGreevy-Glatz '84
BW Mechanical
Elizabeth Nolan Monagle '53
Keitha Landy Murray '68
Bettye Martin Musham
Dr. Peter F. Naccarato
Alison Rich O'Brien '66
Susan Filippi O'Shea '62
Ostgrodd Foundation
Dr. Mary A. Peterson '72
Philene Foundation
PLM Foundation
Promenet, Inc.
Razoo Foundation
The Regan Family Charitable Fund
Judith L. Robinson '90
Vivian Hintze Roche '61
Royal Waste Services, Inc
Dr. Christine Fiorella Russo '53
Veronica Columbo Santilli, M.D. '62
Mr. and Mrs. Gregory Scott P'14
RoseMarie J. Seron '91
Donald and Elizabeth Steckler P'10 and
the Donald and Elizabeth Steckler
Charitable Lead Trust
Elisa Stein
Gloria M. Stevens '02
Shannon April Sweeney '95
Ruth L. Tudos '77
Dr. Myrna Martorana '68 Uhlich and
Dr. Roger Uhlich
Maureen Murphy Vadala '70
Virginia Finn Van Brunt '69

Vinod Changarath, M.M.S., Instructor of Finance



Professor Changarath is a Ph.D. candidate in Finance at the University of Cincinnati. He completed his M.M.S. in Operations Research and

Finance at Mumbai University, India and his Bachelor of Technology in Mechanical Engineering at University of Calicut, India. Before starting his doctoral program, he had 13 years of work experience, with 12 years in equity research in Brokerage and Asset Management environments, emphasizing quantitative research methods and focused on global and Indian equities and Asian banks. Professor Changarath's instructional experience includes teaching various courses in finance at James Madison University in Harrisonburg, VA; Marshall University in Huntington, WV; and the University of Cincinnati in Cincinnati, OH. His research interest is in the area of financial institutions, with an empirical focus.

Edward P. Van Saders '95 and
Paul B. Shusterman
Gail Matthews Waddell '62
Nina Jansson Wadsworth '62
Winning Strategies Washington, LLC
Sheila Wishek
Edwina Gould Yank '53
Mr. and Mrs. Ronald J. Yoo
Jean Engel Zavisza '58
Erwin A. Zeuschner

BLUE & GRAY CIRCLE \$1-\$999

Helen Green Abele '79
Beverly Clunie Abisogun '74
Robin K. Adam
Gloria D. Adams '49
Kelly Adams '98
Richard and Barbara Adler
J. Helene Aleniewski '73
Nancy and Phillip Alexander P'15
Juanita De Grella Alguero '83
Eleanor Kupencow Alper '75
Mary Horan Altura '69
Alina Amaral P'14
Christine Ryan Amundsen '72
Ruth Janeiro Anderson '60
Johanna C. Angrisani '83
Anonymous (15)
Mano Appaswamy '91
Susan Archer '71
Anne Martin Argentieri '70
Rebecca Arnold
Helen and William Aronstein
Jasvinder K. Arora
Mr. Roy Ashton and Ms. Rolla Eisner
Athinia Leka Aston '56
Jeanette Aultz '00
L. Yvonne Bacarisse '57
Harold Baer, Jr.
Katherine Baileys '11
Robert and Natalie Baileys
Audra P. Bailey '10
Gail D. Baker '86
Nanette Lubow Baker '96
Novella Baker-Brindle '76
Mary Kay Ballard
Bank of America Foundation
Mary A. Homer Barash '88
Joyce Heffernan Barber '69
Jennifer L. Palmer Barnes '00
Elsie M. Corrigan Barone '75
Mary Jo Ekkers Barrows '64
Bernadette Barry '85
Mary O'Malley Barry '72
Mary McSorley Bartels '81
Pascale Bastien '85

Joana Battaglia '57
Claudia Pomponi Batten '72
Sara L. Bauknecht '09
Aileen Baumgartner
Florence McHale Baur '57
William and Judith Bautz
Dr. Sylven Seid Beck '72
Denise Duross Beckerle '54
Alice Czubakowski Becnel '69
Alberta Candia Begley '61
Dr. Susan J. Behrens
Lois Bommicino Behrman '68
Honore Rofrano Beletti '64
Elizabeth Schneider Belger '56
Esther Liebers Belger '56
Ellen Wilgus Bell '73
Ruth Bendik '73
Nancy A. Benedetto '70
Helen E. Benford '81
Elizabeth Benham
Barbara Menstrasti Benjamin '64
Mary-Anne Brady Bennett '69
Ann C. Moran Berg '69
Evelyn Kaplan Berkal '92
John and Michele Berman P'11
Frances L. Berryhill '83
Sr. Clare Bertero '65
Eilene Keller Bertsch '59
Ruth Harris Best '82
Sally Bishop '81
Rachel Black '69
Patricia Flattery Blake '58
Rebecca Arnold
Dr. Elisha Blond '05
David and Barbara Blumenthal P'12
Beatrice A. Boeglin '82
Eileen Finnegan Bohan '64
Mary Betts Logan Bohm '95
Carolyn O. Bolt
Mary Tomaszewski Bolte '69
Maryann Bompapartito '88
Mr. and Mrs. Reed Bonadonna
Sharon Bonanni
Evelyn Giordano Bonanno '53
Marion Ferretti Bonomo '59
Amy Boozan
Robert Bordeau
Nancy Kohl Boufford '83
Diana D. Boutross P'15
Eileen Leone Bowen '52
Barbara Boyd P'12
Thomas P. and Anita Boyle P'95
Deirdre Boylston '59
Joan Morel Brakman '53
Martha L. Jones Branch '74
Elizabeth Hannigan Brazaitis '67
Sylvia Cotto Brea '83

Patricia Ann Brennan '62
Elizabeth Shanley Breslin '70
Margaret T. Bresnan '64
Elizabeth T. Bright '91
Broadway Cares/Equity Fights AIDS, Inc.
Carla L. Bromberg '07
Mrs. Barbara Andrusco Brooke '67
Shirley Brooks '76
Mary Ellen O'Brien Brosnan '64
Deborah L. Brown '83
Marita Bisceglia Brown '64
Lorraine Fiore '58
Loretta Nicoletta Bruccoleri '62
Marie Brundage '53
Laura Eller Brunner '51
Anne Higgins Buckley '66
Elinor Buckley '58
Helen M. Buckley '59
Carolyn C. Buechler '69
Jeanne Joyce Burke '73
Margaret Moran Burke '62
Patricia Coen Burnham '62
Joan Prendergast Burns '62
Rosanne Trentacoste Burns '80
Rose M. Burrell
Catharine Wilson Burt '73
Mr. and Mrs. Anthony F. Buscaino P'12
Amy K. Bushnell '08
Susan E. Butler '62
G. Ann Kerwin Byrne '58
Betty Cummins Byrne '64
Mary E. Byrne '84
Patricia Prenty Byrne '85
Catherine Pace Cain '72
Daniel P. Cain '01
Jacqueline Calloway '87
Hannah E. Campbell '12
Sarah Kelly Campbell '61
Ms. Mary Anne Canavan
Catherine Goodwin Capo '79
Barbara Lamude Cappucci '62
Maria R. Capucciati '81
Maureen O'Dea Caragliano '67
Catherine Von Urff Carey '73
Colleen Cariello '03
Frances Carlucci '74
Bernadette Timoney Carroll '56
Donna Casale P'13
Donna L. Casellas '81
Mary Frey Cashin '69
Elizabeth Damrosch Caso '95
Eileen Hannon Cassella '59
Susan E. Cassidy '68
Mrs. Lesley T. Cassis
Florence V. Castellano '86
Alania N. Cater '03

P. Rochelle Cavalli '90
Saverio and Mary Cereste
Eglin L. Chambers '75
Daniel Champ P'13
Dr. Roberta Chapey '64
Susan Charton-Kaplan '72
Dr. Barbara Chas '72
Laurie Chaumont '74
Anne Hanley Chericco '62
Rita Gallagher Chiachiere '67
Lois P. Chiarello '66
Lisa Fredericks Chin '81
Lois E. Chizak '85
Kwija Lee Cho '83
Carole Lacovara Ciano '61
Sandra Cabrera Ciasca '92
Elaine McMahon Cipollone '63
Robert and Loretta Ciraldo P'12
Gertrude and Joseph Clancy
Margaret L. Clancy '77
Penney L. Penington Clarke '85
Sandra Clayton '76
Susan McAndrews Clemente '80
Joanne Clementoni '71
Miriam Clifford-Hansen '79
Nancy Clipper
Mr. and Mrs. John Cochran P'14
Mrs. Ann G. Fitzgerald Coffey '82
Gloria Cohen '79
Marvella S. Colby, D.P.A.
Beatrice Budnick Coleman '76 and
The Coleman Family Trust
The College and Community Fellowship
Charlote Collins '84
Christel Knett Coman '77
Elena Comendador
Lillian Conesa '59
Honore Doyle Connor '71
Carol Maloney Connors '56
Joan Castel Conway '63
Anthony and Susan Cooch P'13
Charles and Regina Cooper
Patricia Dahlinger Copeland '57
Stella M. Corcoran '90
Sara J. Corcoran '02
Stella M. Corcoran '90
Mary F. Cordato, Ph.D. '71
Francine F. Cornelius '85
Kencal Maintenance Corporation
Barbara Scannell Corrigan '66
Sarahann Corrigan '62
Nhora Cortes-Comerer '71
Melinda Cosentino
Professors John and Priscilla Costello
Patricia A. Cotti '67
Joseph and Debra Cottone P'14

Edrex Fontanilla, M.F.A., Assistant Professor of Communication Arts



Professor Fontanilla completed his M.F.A. in Literary Arts, M.A. in Computer Music, and B.A. in Visual Arts with Honors at

Brown University. He is a highly collaborative scholar-practitioner who performs and creates in a variety of forms to explore perception, materiality and temporality in celebration of unique, experiential moments. Professor Fontanilla regularly integrates his research and sensibilities in experience design and digital media into his creative teaching and consulting practice. Having taught a wide range of students in both introductory and advanced production courses, he offers his students a number of foundational and experimental investigations in contemporary authorship.

- Council Of American Overseas Research Centers
Suzanne Devlieger Coursen '74
N. Kent Covington
Jeanne "Bamby" Colgan Craig '57
Cynara Boit Crandall '91
Veronika Kuria Crane '64
Mary Ellen Graciano Crawford '61
Patricia Curcio Creamer '91
Lynn Guidali Crescio '67
Maureen O'Leary Crinnion '57
Jean B. Crockett, Ph.D. '68
Kevin Croke
Lorraine Stella Crosby '67
Marion Haggerty Crowley '58
Mary C. Crowley '64
Sarah Laborne Crowley '59
Edith Cruz '83
CSLL Restaurant Corporation
William C. Cubberley
Kathleen T. Morrison Cuddihy '74
Patricia Moriarty Cullen '80
Roderick R. Cunningham
Angela Curmi
Teresa M. Curmi '03
Deborah Lee Cusack P'13
Hattie Brewer Dallas '87 *
Monica Dalton '81
Mary Ann Daly '72
Claire and Allan Damon
Edward and Elizabeth Dauer P'14
Bruce and Patricia Davenport P'09
Bernard and Susan Davis
Kathleen McCarthy Davis '65
Mr. and Mrs. Kenneth C. Davis P'09
Kathleen Clare Daw '71
Cynthia de Ben '91
Lorena A. De Filippis '69
Barbara Gerard de Zorzi '64
Janet L. DeCastro '77
Elizabeth Ellard Decker '52
Norman and Carmela Dee
Maria Delnnoentiis
Jean Walsh Deitch '56
Carole Mandracchia Del Savio '62
Rosemarie La Villa D'Elia '65
Josephine B. Dellano '68
Noreen and James Dengler
Caroline Desjardins
Ann Squillante DeTorres '67
Ellen Devey
Eileen O'Leary Devine '57
Jane Devine '66
Patricia A. Devine '83
Donna Devlin '72
Nicholas and Elizabeth S. Devlin P'11
- Nancy and Elwood Deweese P' 13
Kathleen Diana '94
Eileen Mosher Diano '81
Laura S. Diffenderfer '02
Pamela L. DiLello, M.D. '76
William and Teresa Dionisio P'13
Eileen Stegman Dispenzieri '72
Maureen Foley Dobbin '52
Patricia Dobbs '57
Mary Birde Doherty '71
Joan and Felix Dolan
Margaret Fitzpatrick Donlon '79
Judy Rohrs Donnelly '64
Kathleen Donohue
Kerry M. Donohue '97
Nancy Herzman Doran '68
Anne W. Doss '00
Eileen Toomey Dowling '58
Cynthia Griffin Doyle '62 and
Laurence Doyle
Burton and Michaela Drayer
Judith Crabtree Duffy '60
Patricia Scarry Duffy '57
Marjorie Dugas Dugas '80
Rosemarie Levesque Dujardin '68
Bernadette Tighe Dunne '56
Connie Dunseath-Gallagher '74
Mary McGovern Durning '64
Leslie Eagle P'06
Julie Schwarz Edelstein '93
Rachel Edmond '01
Matthew A. Eisenhower
Joyce Biggers Ellinghaus '61
Elizabeth Elliott '80
Richard and Janice Emling
Christina Handy Endicott '87
Barbara Borges Elera '62
Brett and Mariann G. Ernst P'13
Dori L. Evans and Russell C. Ball P'14
Rosalind Incorvia Evans '60
Mrs. Donna M. Everitt '88
Cathryn Fadde '91
Kathleen Crotty Fahy '72
Harriet D. Fallon '72
Mary Ann Carney Faraguna '74
Judith Banzer Farr, Ph.D. '57
Delia Cairney Farrell '83
Carol M. Farris
Theresa Karlovits Fassel '73
Jeanne Marie Fastook, M.D. '64
Mrs. Nancy Arbusto Fazio '70
Joyce Gauntner Fedden '53
Elaine Reiman Fenton, Ph.D. '59
Mariel A. Fernandez '06
Rosemarie C. Ferrara '67
Anthony Ferro '01
- JoAnn Gill Ficca '69
Bettina Bonanno Filardi '53
Sheila Filipowski
Dorothy C. Filoramo '62
Irene Schery Fischer '66
Elizabeth Mahan Fister '76
Eileen F. Fitzgerald '72
Joan Hogan Fitz-Gerald '70
Jessica Fitzpatrick '03
Elizabeth Quinn Flanagan '59
Joanne Walsh Flanagan '55
Lynne Brennan Flanagan '64
Eileen Daly Fleck '66
Wanda Fleck
Alice Kelly Fleckenstein '58
Dr. Mary R. Fleischer
Michele Dunne Flower '85
Elaine Flug *
Olivia Radda Foley '62
Joyce Ford
Kathleen Martin Ford '68
Alecia M. Forrester
Anne Butler Foss '78
Martina Fossum
Mary C. Fox '54
The Franciscans of Fort Lauderdale
Lois M. Franco
Eileen Grimmond Freeman '96
Patricia Little Friedman '67
Lynn A. Frielinghaus
Charles R. Fries
Alexander and Christine Froner
Nina Froriep
Cynthia Dalrymple Frost '96
Dr. Laura R. Fry '84
Peggy P. Fung '03
Mary Jo Fusaro '74
Joan Walsh Galasso '56
Christina Gale '97
George and Nicholina Galinsky
Eugene and Jennifer Gallagher P'15
Josephine Laza Gallagher '73
Rosanne '82 and John Gallagher P'13
Desiree V. Gallardo '10
Louise Lynch Gallehsaw '70
Barbara Hagan Gambino '71
Susan Hubert Gammon '76
Jaime Ryan Gans '57
Eileen Garbe '69
Julia Gardiner
Clare C. Garetano '58
Norbert Gasser '84
Elizabeth Hahn Gassman '67
Linda Gatter '71
Abby M. Silva Gavezzoli '02
Linda Rothenberg Gelfond
- John and Nicole Geller
Rosemary J. Gelshenen
Jane Gengo
Eileen Y. Georges '80
Lora Georgiev
Patricia Walsh Geraghty '55
Mark Gil '75
Celia Gilbert
Roseanne Spiess Giles '64
Carol Lane Gillick '60
Mariluz Asensio Giron '76
Felicia Girona
Marianne Githens '56
Givenik LLC
GJSR Enterprises, Inc.
Gale M. Glenn '87 and the
Gale M Glenn Revocable Trust
Global Language and
Communication Services, Inc.
Maryellen Goble '76
Myra Mahoney Goggins '59
Alice Mullarkey Golden '62
Cheryl Goldstein
Judith Goldstein
Lynn M. Goldstein '91
Marie Kennedy Gonzalez '89
Lawrence and Myrna Goodman
Deborah Langan Goodwin
Google Matching Gifts Program
Kathy Hamill Gorman '64
Kathryn Parker Gorman '75
Mary Anne Hayes Gorman '75
Mr. Donald Graham
Joan Rooney Graham '63
Maureen Tormey Grassi '69
Thomas and Lydia Gray
Marilyn Greeley-Walsh '89
Karen R. Green '88
Mr. Daniel R. Greenblatt and
Ms. Amy C. Schwinder
Mr. Peter L. Greene and Ms. Lori Y. Chan
Phyllis F. Greenfogel '81
Fay and Dennis Greenwald
Maryann Englert Grieco '66
Michael J. Grillot P'13
Judith Del Rey Grimaldi '80
Gail Gross
Mary Powell Grossman '67
Ann C. Gubiotti '72
Alicia Guerin
Peggy Madden Gundacker '62
Susan J. Silberfarb Gunser '82 *
Luz Maria Gutierrez '85 and the
Gutierrez Foundation
Phyllis Sgueglia Gwatkin '67
Kirstin Sierer Gwirtz '10

Doreen Haarmann
 Kathleen E. Haarmann P'12
 Paul E. Haarmann P'12
 Sylvia Medina Hadley '81
 Nella Krieger Hahn '02
 Mr. and Mrs. Lewis M. Hall P'98
 Elaine Stracquadanio Hammers '71
 Barbara Messinger Hanley '64
 Patricia J. Collins Hannis '63
 Barbara Peet Hanssen '55
 Carla A. Harris
 Geraldine Harris
 Marie-Therese Hassell Harris '89
 Laura Morson Harsaghy '72
 Lorraine Livornese Harvey '64
 Susan A. Harvey '01
 Carol Hasto '56
 Prof. Donald F. Hayes
 Elizabeth A. Hayes '52
 Barbara H. Hayward '72
 Marguerite Brassel Heithaus '52
 Robert Hempling P'12
 Zvia Hempling P'12
 Danielle Hemsley
 N. Patrick Hennessey M.D.
 Joanne Bronski Henrick '75
 Gray Henry
 Maureen Driscoll Hentrich '70
 Rafael Hernandez
 Barbara Piliero Heydon '67
 Veronica Walsh Heyer '70
 Desiree Hanna Hickey '79
 Patricia Jeppson Hickey '61
 Catherine Szily Hieronymi '63
 Sylvia Diaz Hierro '67
 Callie Spencer Hill '86
 Mary A. Hillig '58
 Christian and Wendy Hires P'12
 Carla Hjelm '84
 Cathleen Quinlan Hodgson '86
 Virginia Gribbon Hogan '96
 Mary Ann Billings Holland '69
 Michelle Prevost Holland '94
 Andrea Hollandt
 Marie T. Curran Horn '50
 Horn Electrical Contracting
 Lois G. Horowitz '89
 Arnold Horton
 Janice T. Howard '01
 Karen J. Howell
 Marilyn Henry Howell
 Deirdre Howley '61
 Angela Hronopoulos '03
 Susan Lovaglio Hudick '78
 Sheila M. Hughes P'13
 Agnes M. Hunt

Jere E. Hunt '09
 Ruth Hunter P'12
 Mr. Vincent Luginne and
 Mrs. Elizabeth M. Hunt-Lucarini
 Deborah Hunt-Repp '82
 Donna Hurwitz
 Eileen Rowe Iammartino '70
 IBM Matching Grants Program
 Mary Ann Casa Incalcaterra '87
 Ann Inguanta P'13
 Dr. Ann Di Bella Jablon
 Joanne Ciske Jacobs, Ph.D. '69
 Sandra '06 and Morton Jacobs
 John and Peggy Jacobson
 Ann Jessen '74
 Ashley Jimenez '10
 Nora Jobson '89
 Adelaide M. Johnson '84
 Adele Johnson '88
 Jacqueline Ruth Johnson '86
 Mr. and Mrs. Thomas Johnson P'10
 Christopher and Debbie Jones P'12
 Paula M. Jones '81
 A. M. Judith Jordan '66
 Denise O'Rourke Jordan '62
 Alexander L. Judka
 Dr. Max Kahn and Ms. Kathleen Lampe
 Rosemary and Keith Kaholokula P'14
 Grace De Fato Kamins '59
 Donald and Catherine Kamowski P'01
 Susan L. Kane
 Meg Kane-Smith '81
 Irene Schlehlein Karazin '64
 Patricia O'Dea Karhuse '72
 Jennifer Karim '02
 Amy Mulholland Karle '57
 John Katsapis
 Dr. Ira H. Kaufman
 Gurdeep Kaur
 Eileen McDowell Kavanagh '71
 Sandra Hendley Kavanagh '64
 Shannon Bolin Kaye
 Elinore M. Kelly '78
 Constance Kelsey '66
 Ada Williams Kendall '05
 Winifred Kender '68
 Winifred Kender '68
 Judith Shea Kennedy '61
 Brigid Gorman Kenney '66
 Margaret Herrmann Kenny '54
 Adele C. Keogh '97
 Paula Kerrigan-Disanza '67
 Constance Roccanova
 Kerwick-Kearns '57, P'81
 Kathryn Kessel
 Mrs. Marsha Kessler

Carol Devine Keyes '57
 Alice Keys '74
 Mr. and Mrs. Henry P. Khost P'13
 Catherine Dunn Kiley '54
 Marilyn Kesper Killeen '62
 Kassie Kilpatrick Kilpatrick '04
 Judith and Alan Kimmel P'14
 Robert B. King
 Virginia Hatch King '96
 Richard and Leslie Kittlesen P'13
 Kiwanis of Astoria/Long Island City
 Rochelle Klass '85
 Joel Kleinman
 Ekaterina Novichenko Klimentova '97
 Lisa Devine Knobel '87
 Mary Ann Beins Kocornik '56
 Konica Minolta Business
 Solutions, USA, Inc.
 Koob & Magoalaghan
 Don Kortlander '06
 Carol Koss '83
 Erin E. Kotheimer Helgers '96
 Mary C. Ward Kraemer '57
 Louisa Kramer-Vida, Ed.D. '73
 Margaret Doyle Kreft '71
 Bernadette Russo Kriftcher '65
 Cindi and Stuart Krost P'14
 Melissa M. Kuba '07
 Valerie and John Kuhi P'04
 Jolanta Kulpa-Gubernat '67
 Mary G. Kunik '74
 Sylvie Falzon Kunstenaar '83
 Maureen Beggs Kunz '62
 Lori Kupfer
 Anita Kurti, SLP
 Diana J. Kwiatkowski Rubin '88
 Patricia La Sala '73
 Katherine Lacey '86
 Sandra Lagana '74
 Kevin and Ellen Lagasse P'15
 Deirdre Walsh Lambe '62
 Rena Percell Landa '89
 Bruce Sloman and Priscilla Lane P'08
 Katherine and Stephen Langan
 Candace and Michael H. Langan P'92
 Mary Hall Langenauer '56
 Mary Holcroft Lanning '63
 Vilma Basello Lara '73
 Claire Larosa '86
 Richard and Laura Latrenta
 Anna Liberatore Lattanzio '69
 Mary Lavin-Crerand, Ph.D. '70
 Ellen Lear '86
 Sharon Whalen Leary '57
 Christiane Leboeuf '99
 Dyana Dumberger Lee '79

Florence H. Lee '49
 Mary E. Lee '65
 Linda A. Lees
 Debra and Benson Lau P'13
 Margaret M. Leo '75
 Jeanne Maas Leonard '53
 Ellen Parlapiano Leppa '62
 Joan E. Levey '58 *
 Maureen Flynn Levinson '58
 Marijo Lewandowski and
 Thomas Maurer P'14
 George and Karen Lewis P'14
 Arthur and Bria Lewy P'12
 Corey Liberman
 Jessica A. Libroia '03
 Benson and Christine Lichtig
 Annette Delucia Lieblein '62
 Marianne O'Leary Liegey '64
 Evelyn M. Ligon '87
 Tangley C. Lloyd '96 and the
 Demarest Lloyd Jr. Foundation
 Michele LoBianco
 Celia Loia Loia-Scott '58
 Marion Long
 Joan Weygant Lonschein '82
 Florence DeFrancesco Lopas '62
 Mr. and Mrs. Jeffrey C. Lopes P'13
 Ilse Bauer Lopez '89
 Dr. Patricia Marshall Lorenz '59
 Jean Walsh Lovejoy '66
 Suzanne Lubell
 AD Lubow LLC
 Virginia Cheasty Lucey '65
 Lisa Chipelo Lumer '87
 Sherry Stregack Lutken '96
 Hilde Lutz '77
 Regina S. Lynch '09
 Tertia Lynch '95
 Meghan L. MacAlpine '08
 Michelle and Neil MacKie
 Natalya Fedorova MacWilliams '97
 Mr. T. Andrew Madden Jr. '07
 Jessica Donohue Maguire '52
 Loretta Deneher Maher '62
 Sandra Barton Mahoney '92
 Constance Malandri '79
 Myra Malkin
 Josephine D'Angelo Maloney '57
 Patricia Maher Maloney '61
 Eileen A. Maloy '67
 Dale Mandelman '77
 Manhattan Book Co., Inc.
 Henry and Rosa Manley
 Jennifer Albert Mann '88
 Ruth J. Mannhaupt '70
 Alison Manning '08

Dan Hunt, M.F.A., Assistant Professor of Communication Arts



Professor Hunt has taught various courses as an Adjunct Professor in the Communication Arts Department at Marymount Manhattan College

since 2011. His educational background includes an M.F.A. in Integrated Media Arts from Hunter College and B.A. in Mass Communication and English from Westfield State College in Westfield, MA. Recently he completed a one-year Visiting Lectureship at SUNY New Paltz, where he also mentored students, conducted seminars on Final Cut Pro and Pro Tools for student groups, and worked with the Women's Studies and Sociology Departments on a joint lecture and screening of his work to explore issues surrounding the gender binary and the criminal justice system. He is interested in fostering lasting collaborations with other academic departments to broaden the scope and experience for students throughout the year.

Sydney Maresca, M.F.A., Assistant Professor of Theatre Arts



Professor Maresca is a professional costume designer with a strong background in costume construction and fashion history. Her designs

have been seen all over New York City and the country. She is a resident designer with OBIE Award (Off-Broadway Theater Award) winning company The Debate Society (TDS) and her work was nominated for a Henry Hewes Design Award for TDS's Buddy Cop 2. She has an M.F.A. degree from New York University's Tisch Department of Design for Stage and Film and a B.A. from Sarah Lawrence College. Professor Maresca has worked with students both as an educator and as a designer at a number of universities including Pace, Princeton, Sarah Lawrence, Western Connecticut State University, Juilliard and the Curtis Institute.

Patricia Dolan Manning '72
Robert S. Manzo P'12
Mary-Jane O'Brien Mardis '67
Laura-Ann Marino '06
Thalia Marmaras '72
Susan Birmingham Marro '89
Patricia Marron '90
Donna Ensign Marshall '83
Norma Dobson Marshburn '87
Sabina Martelli '70
Anne Wacewiz Martin '56
Ellen Forrest Martin '65
Jacqueline A. Martin '78
Mary Antoinette Martin '99
Antonia Ferraro Martinelli '98
Minerva Martinez-Zanca '79
Eileen O'Connor Massa '76
Barbara D. Massey
Sandra Cherone Mathis '62
Betsy Durkin Matthes '96
Vita Tallat-Kelpsa Matusaitis '64
Castillo Mauricio
Lawrence May and Deborah Beece P'12
Marguerite Shilling Mayers '67
Brooke Boschen McAnaney '03
Deirdre C. McAnena P'12
Margaret A. McCaffrey '63
Regina Carfagno McCairns '73
Eileen Pillmeier McCardle '50
Alice O'Hara McCarter '65
Deirdre Dundon McCormack '68
Kelly M. McCormack '09
Mary Roberts McCormack '61
Dorothy McCoy '74
Joan Kelly McCoy '61
Rocky and Jane McCullough P'11
Maureen Hynes McDermott '88
Frances McDonald
Maria Parran McDonald '70
Emily Burke McDonough '62
Joan Greco McDougall '86
Margaret McElhone '63
Eileen McEntegart
Trina S. McField
Patricia A. McGivern '62
Joan Austin McGowan, Ph.D. '66
Barbara Russo McGrath '60
Christine Kaspak McGuire '73
Kathleen Carberry McKee '75
Susan McKeon '66
Joyce Ortell McLaughlin '57
Miriam E. Krause McLean
Eileen McLoughlin '81 *
Frances M. Cloonan McLoughlin '58
Valerie McNamara
McNufty Outdoors, Inc.

Josephine Zingaro McShane '56
Mary McCabe Meakem '79
Kathleen A. Meehan '68
Patricia Rita Meehan '57
Ana Mejia-Andrade '99
Joan Anne Melanson '88 *
Robin Melen
Susan Slocum Melino '75
Ida Melone '73
Christine Nevin Meloro '74
Myra A. Merlo '67
Metropolitan Life Foundation
Matching Gift Program
Janet Thurkow Micari '72
Jeanne A. Michaud '67
Bernadette Michel '90
Linda Miele-Cavallaro '83
Hermine '77 and Sidney Migdon
Barbara J. Miller '77
Kenneth Miller
Linda Miller-Roseman '91
Joan Weiss Mines '73
Maureen C. Mingle '82
Mary V. Minstrell '64
Lavinia Bowie Miro '72
Melvina Missouri-Donovan '74
Helen Ravert Mitchell '88
Mary Maloney Mitchell '56
Brooke Mitzner
Mary McGrath Moclair '62
Megan Moffit '03
Dr. Patricia Mohr '62
David Mold and Rebecca Fasanello
Jonathan and Rebecca Moldover P'11
Ana V. Molina '81
Virginia Grace Monahan '67
Miguel A. Montalvo P'14
Mr. and Mrs. Michael C. Montavon P'12
Frank J. Monteleone '04
Mrs. Ann Monton P'09
Jeffrey and Susan Moody P'12
Joanne Moore '65
Mr. and Mrs. Thomas M. Moore P'12
Armando Morales '12
Lorraine Malley Moran '73
Margaret K. Morris
Michael and Kerry Morrison P'13
Noelle O'Callaghan Morrison '95
Susana Mortes
Mr. Gary Berner and
Mrs. Dawn M. Muller P'12
Mary McCarthy Mumford '60
Mr. and Mrs. Scott Mundy P'07
Colleen Kade Murphy '72
Sr. Jacqueline A. Murphy, RSHM '55
Kathleen O'Hare Murphy '83

Kathleen J. Murphy '68
Mary Ellen Hartigan Murphy '70
Suzanne M. Murphy '87
Mr. and Mrs. Brian Murray P'14
Marian Cox Myskowsky '66
Peter A. and Laura T. Naccarato
Bernadette A. Nader '86
Teresa Navarro Nasif '67
Marija Masonis Navickas '65
Regina Neal '74
Michelle Cantero Needle '73
The Daniel M. Neidich and
Brooke Garber Foundation
Tim and Marlene Nelson P'14
Helen McCormack Nerod '62
Dianora Niccolini '95
Alpha L. Nichols
Anne Trenkle Nichter '54
Frances-Ann Nolan '59
Jeanette Norris '74
Northeast Floor Coverings, Inc
Mary C. Norton, Ed.D. '58
Regina Novy '79
Loraine K. Obler
Ann P. O'Brien
Cheryl O'Brien
Alison Rich O'Brien '66
Margaret Hollman O'Brien '94
Peggy O'Brien Faragasso '67
Anne Hollowell Obuck '57
Mary Anne O'Shea O'Callahan '64
Joan Branchini Occhipinti '58
Sharon A. O'Dea '86
Mary Hehir O'Donnell '61
Mary Fullam O'Donnell '58
Barbara Pickess O'Halloran '56
Carol Delaney O'Handley '67
Mary Morley O'Hanlon '75
Annette Perrin O'Hare '58
Mrs. Elaine P. Okonkwo '73
Margaret O'Leary '69
Leslie O'Malley, Ph.D. '64
Margaret McLaughlin O'Mara '99
Mary A. Breen O'Neill '74
Evelyn O'Dwyer O'Prey '61
Patricia Kennedy O'Prey '63
Catherine O'Rourke '74
Thomas and Sandra O'Rourke P'11
Sr. Alice O'Shaughnessy, M.D. '56
Ann Deery O'Shea '62
Wendy Osserman
Mary T. O'Sullivan '68
Mark and Anne M. Otts
Lisa Perkins Ougourlian '88
S. Keith Outlaw
David Schoenthal P'12

Dr. and Mrs. Douglas Padgett
Waleska Padillo-Castellar '01
Barbara DiAgostino Paesano '79
Marie Menna Pagliaro '56
Thomas Palatucci
Martha Palubniak '90
Camille Difrisco Pandolfelli '57
Christine M. Parks '80
Theresa Timko Parsons '89
Martin Pastore
JoAnne Adams Pavia '54
Jean Samartan Pawlik '66
Jeanne Pearson-Gray '80
Joanne Pellegrino, Esq. '66
Geraldine McDermott Pender '68
Rudolph A. Perez
Patricia E. Permakoff '75
Margaret Carey Pero '62
Severine Perrin
Jane Byrne Petretti '71
Ann Winters Petrovits '88
Janet Petterson '78
Antoinette Greco Pettineo '72
Nora Wynne Peyton '74
The Piano Doctor, Inc.
Jacqueline I. Hunt Pickering '00
Gloria Plaut
Kathryn McLaughlin Plum '60
David Podell, Ph.D.
Christine Polanec
Barbara Hoppe Pollock '86
Kristi Pond P'12
Eric Popp
Margaret Hannon Porciello '70
Ms. Patricia Porter '78
Dr. Marie Heneghan Postner '62
Montserrat Prades-Martynek '88
Roberta Hoffman Preisel '65
Frances Prelli '58
Mr. and Mrs. Peter Price
Kathleen Feuerstein Proud '86
Jennifer L. Purdon and
Michael J. Templeton P'15
Susan and Peter Purdy
Deanna O. Quevedo '75
Nora Eberhardt Quigley '51
Barbara Silvestri Quinn '57
Donna Jabbour Quinn '74
Susanne R. Quinn '88
Bonnie Hernandez Quintero '89
Denise and Jonathan Rabinowitz
Mary Radice
Ernest and Constance Rahman
Anita Raisch '81
Caroline Shaw Ramsey '76
Joan Rand '60

Tahneer Oksman, M.A., Assistant Professor of Academic Writing



*Professor
Oksman is a
Ph.D.
candidate in
English
Language and
Literature
at the Graduate
Center of the
City University
of New York*

(CUNY). She completed an M.A. in Humanities at the University of Chicago and a B.A. in English at the University of Pennsylvania. Over the past six years Professor Oksman has taught writing and literature courses at various institutions. Her courses stress the importance of writing as a mode of thinking by incorporating visual elements, such as photographs, films, and graphic narratives, to teach the fundamentals of good writing and critical thinking. Professor Oksman will be serving as the Director of the Freshman Writing Program at Marymount Manhattan College.

Patricia Meany Rand '55
Vandana Rao and Ashish Dev
Myriam Otero Rasulo '70
Joanna Seely Reid '53
Margaret Power Reilly '53
Marjorie Gleeson Reilly '60
Ronald and Robin Reisman
Virginia Smith Rhatigan '66
Joanne Love Rhoads, M.D. '72
Rhythm Of Life Corporation,
DBA Broadway Dance Center
Mary Doran Richards '58
Peggy M. Richards '84
Mr. Kenneth Richieri and Ms. Kathryn Obler
Geraldine Rigney
Christina N. Rinaldi '05
Camille Rinato
Eula and Vanessa Roberts P'14
Barbara Robertson '84
Carol Fox Roche '58
Dana Grunklee Rodden '08
Robert Rodwin
Georgia B. Roelof
Kurt and Shyanne Roeloffs
James Rogers
Rachel Munoz Romero '81
Mrs. Oren Root
Lorraine Rosano '62
Margaret Conroy Rosenfeld '62
Elizabeth Bleda Ross '54
Helen C. Noonan Rossler '58
James Rouhanden and Stephanie Young
Marianne Vogel Round '79
Victoria Jersitz Russo '73
Ellen Todaro Ryan '88
Mary Ann Mangini Safrey '70
Mr. and Mrs. Brandt Sakakeeny
Jean Sonnenblick Saklad '78
Joanna A. Salviani '66
Ann Neefus Sammon '61
Karin A. Sanders '98
Alister Sanderson, Ph.D. P'06, P'08
Patricia Fillo Sands '66
Jeannette and Alexander Sanger
Leonard and Nadia Santarsiero P'14
Wayne Santucci
Marybeth Sarsfield '58
Diane Gamba Satriano '72
Marilyn A. Sauline '76
Alice Pidgion Scarangella '69
Irene Schaefer '63
Peter Schaefer and Margaret Schwartz
Jenna Schebell
Carol Jedlicka Schessler '66
Raymond and Donna Schiano
Elizabeth Lynch Schiebel '63

Patricia Driscoll Schiller '61
Clare De Santo Schlich '58
Eleanor M. Schmauser '84
Barbara E. Schneider '88
Joanne Ribaudo Schneider '69
Steven and Brenda Schneiderman
Theresa A. Schoenig, Ph.D. '57
Kevin and Carol Schuele P'15
Joan Wright Schuster '68
Diane Horowitz Schwartz '00
Maryellen McGoldrick Schwarz '60
Valerie J. Schwinger
Frances Castiglia Scoville '71
Elizabeth and William Seaman P'14
Mary Ann Sears-Prunty '51
Jim and Lisa Seguin P'08
Kimberly Tzamorotas Self '88
Grace Sells '83
Lynda M. Senisi '10
Sentinel Benefits and Financial Group
Margaret Kamowski Shakibai '01
Eileen McQuade Shapiro '74
Roslyn Shapiro '96
Eileen McGivern Shea '64
Richard Sheldon
Denah S. Angel Shenkman '05
Clare M. Sheridan '63
Joan Trovato Sheridan '67
Joseph and Gabriella Sheridan P'15
Rosemarie Longobardi Shevlin '78
Deborah Bevan Shinner '72
Malin M.B. Kallberg-Shroff '98
Dr. Teresa M. Signorelli
Laura and Robert Sillerman
Cheryl B. Silver '89
Tina M. Silvestro '78
Merle L. Simon '04
Annabelle G. Simpson '69
Theresa Oifer Sinopoli '73
Carolyn G. Skiffington '81
Mark and Tammy Skolnick P'12
Carole Lawrence Skoulatos '66
Janet Lee Cassen Slavin
Adrienne M. Smith '80
Claire Fitzgerald Smith '59
Theresa Mueller Smith '77
Vanesia Smith '93
Claudette James Snitiker '62
Ann Solberg
Mr. William C. Soleau and
Ms. Christine Redpath-Soleau
Mary L. Solliday '75
Dr. Linda Z. Solomon
Randy and Dianne Sora P'14
Angel and Claire Soto
Loretta Churley Spadafora '64

Penelope A. and Arnold Spangler P'11
The Arthur and Pollock Spiegel Foundation
Carola Hortmann Sprague '61
Barbara A. Stahura '75
Norma Stanford '61
Heather M. Stanton
Rebecca Steckler '10
Mr. and Mrs. Eric Stedfeld P'12
Carolyn N. Steed
Barbara E. Stein
Ellen C. Haney Stein '64
Margaret Unger Sternfeld '69
Linda Stocknoff
Lorraine Esselborn Stratis '65
Haila Strauss
Patricia Stryker '57
Dr. Eileen Sullivan '63
Jacqueline Pinto Sullivan '64
Judith Sullivan
Mary Geraghty Sullivan '62
Paul and Stacey Summers P'12, P'15
Bernadette Avitabile Surak '72
Emile B. Svitzer
Donald and Kimberly Switzer P'12
Jacquelyn Meryl Sykes '05
John Sykes P'05
Gisela T. Szurgot '03
Eva Nemeth Taborsky '52
Sheila Barry Tacon '56
Moheeta Tamrakar
Judith C. Tate, Ph.D. '63
Mrs. Ellis Taussig-Phyfe '90
Austin N. Taylor '11
Beverly A. Taylor '90
Mary Ruhe Tesoriero '64
Carol A. Tessel
Gloria Blanchfield Thomas, Ph.D.
Peggy Thompson '76
Guillermo Thorne '86
Joy Thorpe '80
TIAA-CREF
Ann R. Tierney '62
Dr. Richard Tietze
Susan Tisch-Allen
Regina P. Titus '82
Dina Pagliughi Tornabene '72
Irma Torres '92
Jeanette Flores Torres '86
Mr. Randal D. Tupper
Patricia Toomey Tweedy '74
Eileen Ambrose Tynan '66
Bernice Tyson '81
Susan Krische Ujazdowski '82
Wilma M. Vaccaro '84
Hope Bahlert Valbuena '83
Elizabeth Hollowell Valentino '59

Marcia Van Vechten '81
Mr. and Mrs. Richard Vanduyne
Mary E. Molloy Vargas '68
Dorothy Ehrlich Vawter '84
Barbara Vellucci '82
Geraldine Sullivan Venskus '64
Verizon
The Vermont Community Foundation
Marilia Verri
Joan Vaneria Viggiano '57
Sr. Catherine Vincie, RSHM '73
Linda A. Vinson '84
Jeanne M. Viviani '68
Carol Jones Vobach '62
Joanne Schuh Vorburger '65
F.B. "Lee" M. H. Wadelton III
Colette A. Wagner '73
Sandra Wakefield '03
Walk4Hearing
Diana Paulsen Walker '06
Sheila O'Boyle Walsh '66
Ann Nannery Ward '65
Charles and Alice Ward P'15
Professor Maryanne Cavanagh Ward '66
Sidney and Sharon Warren
Ronnie Guariglia Warren '69
Rita Ortega Waterman '64
Adrienne and Ronald Webster P'15
Suzanne Billings Webster '72
Mr. and Mrs. Frederick J. Weihl P'01
Jean Wentworth
Barbara Lake West '67
Emily Westerman
Alicia F. White '95
Ann O'Connor White '76
Beryl E. White '83
Joyce Jones White '76
Joanne O'Connell Whitney '59
Richard '92 and Courtney '91 Whittington
Denise Diffley Whorton '70
Jacqueline L. Wilcher
Ariean Vanbrunt Wilcox '76
Lynn W. Wildman
Mrs. Marilyn L. Wilkie
Paul and Joan Wilkinson P'05
Doris D. Williams '82
Eugene and Jacqueline Williams P'12
Jean Williams '77
Lottie Morgan Williams '76
Eileen Wilson '73
Katherine Persico Wilson '87
Betty Ann Mulry Windbiel '51
Treb Winegar
Avia Kinard Wise '78
Carol Ephraim Wise '62
Patricia Wittenstein

Women's Civic Club of Katonah
 Lolita Colson Wood '73
 Dolores Johnson Wright '60
 Kathleen Anthony Wyman '96
 Marjorie Conroe Wynne '62
 Rudolph and Kathy Wyrofsky P'14
 Richard and Sheila Yacobush P'11
 Elaine Yudkovitz P'10
 Corinne Holgerson Zander '79
 Clarissa and Ronald A.* Zanoni
 Muriel MacDonald Zarb '64
 Giedre Zaunius '54
 Elizabeth Zebrowski '62
 Margaret Godfrey Zell '62
 Maureen Kelly Zuk '63

TRUSTS AND FOUNDATIONS

The Achelis and Bodman Foundation
 The George E. & Kathleen E. Austin
 Foundation
 The Arun I & Asmita Bhatia
 Family Foundation
 The Dan and Gloria Bohan Foundation
 The Brown Foundation of Houston
 The Charitable Foundation of the
 Burns Family, Inc.
 The Carson Family Charitable Trust
 The Coleman Family Trust
 The Herman & Henrietta Denzler
 Charitable Trust
 Fairfield County Community
 Foundation, Inc.
 Fishel Family Charitable Foundation
 Samuel Freeman Charitable Trust
 The L. W. Frohlich Charitable Trust
 Gale M. Glenn Revocable Trust
 The Glickenhau Foundation
 Gutierrez Foundation
 Gates Helms Hawn Foundation
 The Carl and Marsha Hewitt
 Foundation, Inc.
 Willis and Nancy King Foundation
 Demarest Lloyd Jr. Foundation
 Frederick Loewe Foundation
 The Lowerre Family Charitable Trust
 The Marshall Family Foundation, Inc.
 National Endowment for the Arts
 The Daniel M. Neidich and
 Brooke Garber Foundation
 The Joseph C. Nugent Family
 Charitable Trust
 Ostgrodd Foundation
 Philene Foundation
 PLM Foundation
 The Pumpkin Foundation
 Razoo Foundation
 Rowe Family Foundation

The Rudin Foundation, Inc.
 The Selz Foundation, Inc.
 The Arthur and Pollock Spiegel Foundation
 Donald and Elizabeth Steckler
 Charitable Lead Trust
 Stowe Family Foundation
 The Vermont Community Foundation
 The Waldorf Family Foundation
 Arthur Williams Residuary Trust

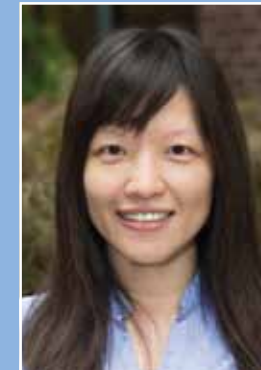
TRIBUTE GIFTS

In honor of Cathryn Adams '12
 Dr. and Mrs. Peter X. Adams P'12
 In honor of Dr. Ann Aguano
 Mr. and Mrs. Henry P. Khost P'13
 In memory of Vernon Anthony Alper
 Eleanor Kupencow Alper '75
 In honor of Dr. Peter Baker
 Anonymous
 Prof. Donald F. Hayes
 In memory of Paulette Bastien
 Pascale Bastien '85
 In honor of Aileen Baumgartner
 Barbara McIntyre Hack '73
 In honor of Adrienne Baxter Bell
 Anonymous
 In honor of John and Susan Bendik
 Ruth Bendik '73
 In memory of Barbara Bennett '83
 Mary V. Minstrell '64
 In memory of Sr. Marijella Berg, RSHM
 Elaine Reiman Fenton, Ph.D. '59
 In honor of Amanda Berman
 John and Michele Berman P'11 (2)
 In honor of Genevieve Bingham '11
 Michael H. Bingham P'11
 The Piano Doctor, Inc.
 In honor of Shira Blumenthal '12
 David and Barbara Blumenthal P'12
 In memory of Serena D. Bobrowsky
 Joan Kelly McCoy '61
 In memory of J. William Bordeau
 Marvella S. Colby, D.P.A.
 Cynthia de Ben '91 and William Grant
 Kerry M. Donohue '97
 Paul B. Shusterman
 Chris Lee Stafford, Esq. '99
 April Sweeney '95
 Edward P. Van Saders '95 and
 Paul Shusterman
 In memory of Thomas E. Bowen, Sr.
 Eileen Leone Bowen '52
 In memory of Rosemary Brown
 Roseanne Spiess Giles '64
 In memory of Catherine P. and
 Hubert J. Burke

Kathleen M. Burke, Esq. '72
 In memory of Marion and Jim Cahill
 Maureen '60 and Patrick Grant
 In honor of Judith M. Carson
 The Pumpkin Foundation
 Joseph and Carol Reich
 In honor of Lisa Casale '13
 Donna Casale
 In memory of Julia Campbell Gordon
 Eglin L. Chambers '75
 In honor of Liza Ciraldo '12
 Robert and Loretta Ciraldo P'12
 In honor of Dr. Joseph P. Clancy
 Eleanor M. Imperato '68
 In honor of Hallie Cohen
 Steven and Brenda Schneiderman (2)
 In honor of Dr. Marvella Colby
 Linda A. Vinson '84
 In memory of Candida Connolly
 Joanna A. Salviani '66
 In memory of Kateri Freaney Cooke
 Joanne O'Connell Whitney '59
 In honor of John and Priscilla Costello
 Ronnie Guariglia Warren '69
 In honor of Professor John Costello
 Peter A. and Laura T. Naccarato
 Regina P. Titus '82
 In honor of Priscilla Costello
 Penney L. Penington Clarke '85
 Kathleen A. Meehan '68
 Peter A. and Laura T. Naccarato
 Regina P. Titus '82
 In memory of
 Mr. and Mrs. William H. Colgan
 Jeanne "Bamby" Colgan Craig '57
 In memory of Sr. William R. Daley
 Lois P. Chiarello '66
 In memory of Rosalie A. Dall '82
 Robert F. Dall
 In honor of Colin Davis
 Mr. and Mrs. Kenneth C. Davis
 In memory of Professor Mary T. Delahanty
 Barbara Gerard de Zorzi '64
 Irene Schaefer '63
 In memory of Mr. and Mrs. A. Dellano
 Josephine B. Dellano '68
 In memory of Barbara G. Tchabovsky
 Anonymous (2)
 Dr. Susan J. Behrens
 Susan M. DeMetropolis
 Stan Gamel
 Jungmoon Hyun
 April P. Landes
 Razoo Foundation
 Dena G. Rosenberg
 Richard and Ann Signorelli

Elise M. Wagner
 In honor of Meghan Dengler
 Noreen and James Dengler
 In memory of Mother William Daly and
 Mother Thomas Hanrahan
 Bernadette Tighe Dunne '56
 In memory of Grace Finigan '76
 Beverly Clunie Abisogun '74
 In honor of Marion C. Flannery
 Anne C. Flannery '73
 In honor of Mary Fleisher
 Kerry M. Donohue '97
 In memory of Ita Ford
 Sarah Kelly Campbell '61
 Kathleen Monahan Gregg '61
 Vanguard Charitable
 Endowment Program
 In memory of Carmine Gamba
 Diane Gamba Satriano '72
 In honor of Class of 1976
 Maryellen Goble '76
 In honor of Joseph Goulart III '12
 Valerie McNamara
 In memory of Robert and Kathryn Graciano
 Mary Ellen Graciano Crawford '61
 In memory of Evelyn and Bernard Spanier
 Karen R. Green '88
 In memory of Paul R. Greenfogel
 Phyllis F. Greenfogel '81
 In memory of Michael Hannon
 Eileen Hannon Cassella '59
 In memory of Sr. Edmund Harvey
 Mary C. Ward Kraemer '57
 In honor of Dina A. Hempling '12
 Robert Hempling P'12
 In memory of Veronica McNamara Walsh
 Veronica Walsh Heyer '70
 In honor of Sara Hires '12
 Christian and Wendy Hires P'12 (2)
 In memory of Dr. and Mrs. Michael J.
 Jordan and Mrs. Gertrude H. Billinger
 A. M. Judith Jordan '66
 In honor of Ms. Zoe Kaplan
 Adele C. Keogh '97
 In memory of Sheila Horgan Kelly '61
 Mary Hehir O'Donnell '61, in memory
 of Joseph and Margaret Hehir
 In memory of SSgt Chris Kiernan
 Sean O'Rourke
 Thomas and Sandra O'Rourke (2)
 In honor of Ed Fish
 Joel Kleinman
 In memory of Elita Bucher
 Barbara Silvestri Quinn '57
 In honor of Kristin Kuhi '04
 Valerie and John Kuhi P'04

Trista (Shih-Ching) Wang, M.B.A., Instructor of Marketing



Professor Wang is a doctoral candidate in the Fox School of Business at Temple University, Philadelphia, PA, with a broad range of research interests

including the consumer decision-making process, sensory branding, luxury branding and product categorization. Most recently she has been researching the impact of social media on luxury branding strategies. Her teaching expertise includes various courses in Marketing Research, Consumer Behavior, Strategic Marketing, Sales Management, Business to Business Marketing and International Marketing at Temple University and National Chengchi University in Taipei, Taiwan. She holds an M.B.A. in International Business/International Marketing and B.B.A. in International Business from National Chengchi University, Taiwan.

In memory of Dorothy Kuveke '60
Maureen Kelly Zuk '63
In memory of Mr. and Mrs. Joseph Basello
Vilma Basello Lara '73
In honor of Thomas Lawson '12
Barbara Boyd P'12
In memory of Mother Peter Elliott, RSHM
Florence H. Lee '49
In memory of Mother Dymphna
Alice Riley Finley '79
Lynn M. Goldstein '91
Evelyn O'Dwyer O'Prey '61
Ronnie Guariglia Warren '69
In memory of Elsie Marie McMahon
Maureen Flynn Levinson '58
In memory of Adrienne Lewis
Deborah L. Brown '83
In honor of Taylor A. Lewis
George and Karen Lewis P'14 (2)
In honor of Helen Lowe
Nora Wynne Peyton '74
In honor Of Jaqueline Lynch
The Lynch Family Fund of the
Community Foundation of New Jersey
James H. Lynch, Jr.
In honor of Robert and Mary Lynch
Tertia Lynch '95
In memory of Maureen Lyons Olson
Ginger Lyons de Neufville '70
In memory of Margaret and
James MacDonald
Muriel MacDonald Zarb '64
In memory of Mary & Henry Maloy
Eileen A. Maloy '67
In honor of Cassandra Manzo '12
Robert S. Manzo P'12
In honor of Veronica Martin
Mary A. Martin '99
In honor of Anne Mazelis
Regina Neal '74
In memory of Sister Raymond McKay, RSHM
Sheila Barry Tacon '56
In memory of Margaret Ellen McNamee
Louise Lynch Galleshaw '70
In memory of Margaret Molinari Duckles '67
Carol Delaney O'Handley '67
In honor of Manuel Noriega
Miguel A. Montalvo P'14
In memory of Barry Monton
Mrs. Ann Monton P '09
John Monton '09
In honor of Jill E. Moody '12
Jeffrey and Susan Moody P'12 (2)
In memory of my parents
Lorraine Malley Moran '73

In honor of Austin W. Nelson '14
Tim and Marlene Nelson P'14 (2)
In memory of Mary Ellen Maher Nix '62
Susan Filippi O'Shea '62
In memory of Eileen Duggan Norton '61
Alberta Candia Begley '61
In memory of Mrs. Carol Novy
Regina Novy '79
In memory of Pierre Novy
Regina Novy '79
In memory of Mr. and Mrs. Deery
Ann Deery O'Shea '62
In honor of Natasha Peal
Benson and Christine Lichtig
In memory of Regina Fullam Powers
Mary Fullam O'Donnell '58
In honor of Muriel D. Quartararo
James F. and Alicia P. Bendernagel '73
In memory of Eduardo and Roas Quevedo
Deanna O. Quevedo '75
In honor of Martin Reidy
GJSR Enterprises, Inc.
Gary and Judy Reidy P'14

IN HONOR OF THE RELIGIOUS OF THE SACRED HEART OF MARY

Anonymous
Eilene Keller Bertsch
Marion Ferretti Bonomo '59
Catherine Cook Herlihy Brogan '66
Bulldog Ventures, Ltd.
The Charitable Foundation of the
Burns Family, Inc.
Judith M. '03 and Russell Carson
Mr. Russell L. Carson
Veronika Kuria Crane '64
Lynn Guidali Crescio '67
Josephine B. Dellano '68
Kathleen Crotty Fahy '72
Anne C. Flannery '73
Mary C. Fox '54
Maureen Brandon Goldsborough '66
Julianne Thompson Grace '59
The Carl and Marsha Hewitt
Foundation, Inc.
Marsha A. Hewitt '67
Maureen Dunn Hocker '66
Eleanor M. Imperato '68
Amy Mulholland Karle '57
Lisa Devine Knobel '87
Bernadette Russo Kriftcher '65
Maureen M. Lally '60
Maureen Flynn Levinson '58
Marianne O'Leary Liegey '64
Evelyn M. Ligon '87
Florence Defrancesco Lopas '62

Ginger Lyons de Neufville '70
Patricia Parisi Magliocco '63
Josephine D'Angelo Maloney '57
Margaret McElhone '63
Anne McKernan, O.P. '63
Maria Kuria Montgomery '61
Susan Filippi O'Shea '62
Natasha Pearl and Richard R. Stowe
Geraldine McDermott Pender '68
Kathryn McLaughlin Plum '60
Doris F. Sukup Scaturro '61
Irene Schaefer '63
Theresa A. Schoenig, Ph.D. '57
Jeanne M. Viviani '68
Colette A. Wagner '73
Lucille Zanghi and James Dow P'11
Maureen Kelly Zuk '63
In memory of John Downing
Mary Doran Richards '58
In memory of Mill Roseman
Linda Miller-Roseman '91
In honor of Jason Rosenfeld
Anonymous
In memory of
Mr. and Mrs. Anthony J. Fiorella, Sr.
Dr. Christine Fiorella Russo '53
In memory of Kathleen Kavanagh '64
Sandra Hendley Kavanagh '64
In honor of Emily Santarsiero (2)
Leonard and Nadia Santarsiero P'14
In memory of Sr. Judith Savard
Elizabeth T. Bright '91
Francine F. Cornelius '85
Cynara Boit Crandall '91
Mary L. Solliday '75
In honor of Elena Schiano '12
Raymond and Donna Schiano (2)
In honor of Ashley L. Schoenthal '12
David Schoenthal P'12
In memory of Irving and Helene Schwartz
Diane Horowitz Schwartz '00
In honor of Christopher James Sheehan '13
Deborah Lee Cusack P 13
In memory of Dr. Gurcharan Singh
Sara J. Corcoran '02
Noelle O'Callaghan Morrison '95
Sandra Wakefield '03
In honor of Rosemarie Siringo
Janet Silverman '81
In honor of Jake Skolnick '12
Mark and Tammy Skolnick P'12 (2)
In memory of Elizabeth Walker
Stenerson '66
Eileen Daly Fleck '66
In memory of Margaret Jefferey
Jacqueline Pinto Sullivan '64

In honor of Rachael Switzer '12
Donald and Kimberly Switzer P'12 (2)
In honor of Eleanor Templeton
Jennifer L. Purdon and Michael J.
Templeton P'15 (2)
In honor of Renee M. Tessier '07
Mr. and Mrs. Scott Mundy P 07
In memory of Silvia Thompson Malone
Peggy Thompson '76
In memory of Geri Keeley Trout '69
Annabelle G. Simpson '69
In memory of Richard W. Vawter
Dorothy Ehrlich Vawter '84
In honor of Mary McCarthy Warren '66
Fidelity Charitable Gift Fund
Alison Rich O'Brien '66
In memory of Mary Ortiga and
Amalia Rattazzi
Rita Ortiga Waterman '64
In memory of Mother Ferdinand
Tina M. Silvestro '78
In memory of Mr. Michael and
Mrs. Irene Whalen
Sharon Whalen Leary '57
In honor of Jean P. Wilhelm
Anonymous
In honor of Marilyn Wilkie
Barbara Robertson '84
In honor of Bria Williams
Geraldine Rigney
In honor of Eugene Williams '12
Eugene and Jacqueline Williams P'12
(2)
In honor of Treb Winegar
Anonymous
In honor of Joseph S. Handel
Kathleen Anthony Wyman '96
In memory of Carol Zara '85
Michele Dunne Flower '85
In memory of Cornelia Zayat Hanna
Desiree Hanna Hickey '79

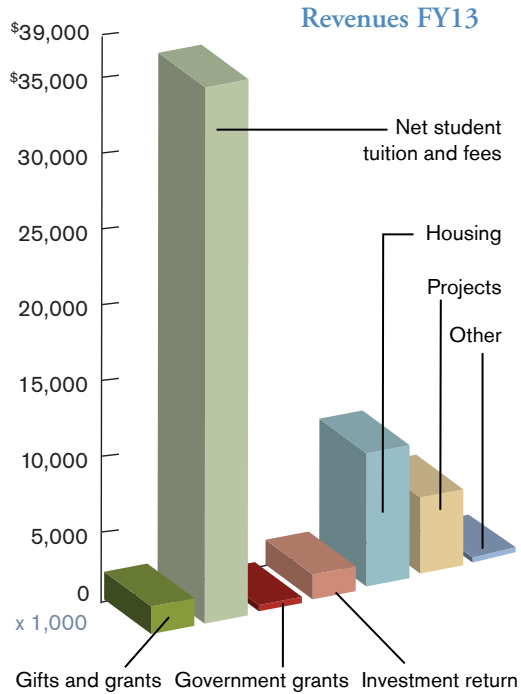
Sarah Nelson Wright, M.F.A., Assistant Professor of Communication Arts



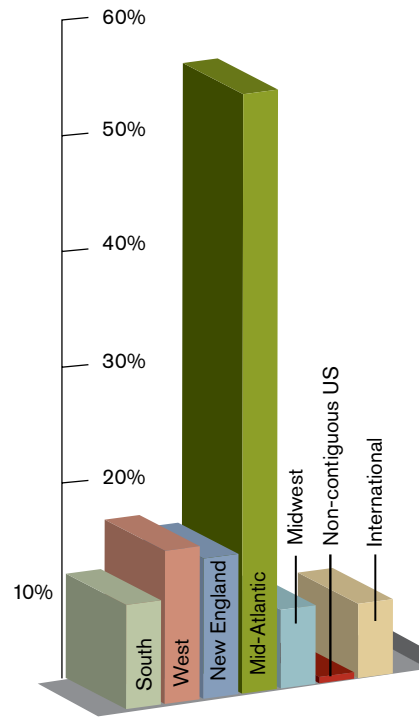
*Professor
Wright is an
interdisciplinary
media artist
and educator
with a strong
record of socially
engaged projects
that employ art
to engage in
dialogue about*

*access, equity and representation. She is
also a dedicated university professor with
experience teaching analytical and studio
courses at NYU Polytechnic and Hunter
College. In addition to teaching and
making art, Professor Wright has a rigorous
practice as a curator, engaging with
community organizations to create events
that use media art to fuel public dialogue.
She received her M.F.A. in Integrated
Media Arts at Hunter College and her B.A.
in American Studies at Yale University.
She will be serving as Director for
The Theresa Lang Center for Producing at
Marymount Manhattan College.*

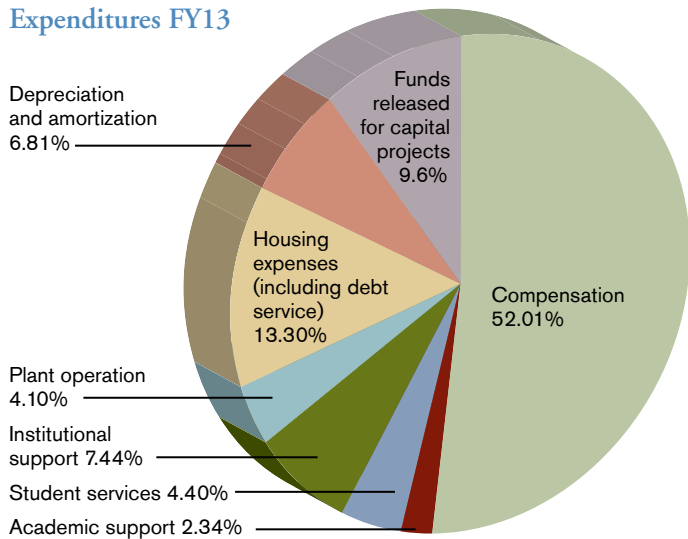
FINANCIAL STATISTICS FY2013



FY13 enrollment totals by geographic location



Expenditures FY13



REVENUES FY13

Gifts and Grants	\$1,896,335
Net Student Tuition & Fees	\$36,824,485
Tuition and Fees	\$47,400,093
Less: Student Aid	(\$10,575,608)
Government Grants	\$428,593
Investments	\$1,709,361
Housing Revenue	\$9,139,423
Funds Released by the Board of Trustees for Capital Projects	\$5,219,550
Other	\$347,163
Total Revenue	\$55,564,909

EXPENDITURES FY13

Compensation	\$28,092,044
Academic Support	\$1,269,299
Student Services	\$2,380,959
Institutional Support	\$4,020,191
Plant Operations	\$2,210,538
Housing Expenses (including debt service)	\$7,190,897
Depreciation and Amortization	\$3,662,119
Funds Released by the Board of Trustees for Capital Projects	\$5,219,550
Total Expenditures	\$54,045,597

BALANCE \$1,519,312

2013 GIFTS & PLEDGES

The following Gifts and Pledges list includes individuals, organizations and foundations that have made gifts and/or pledges to the College from July 1, 2012 to June 20, 2013.

CHAIRMAN'S CIRCLE

\$50,000+

Gloria Spinelli Bohan '63 and
The Dan and Gloria Bohan
Foundation / Omega World Travel
Mr. and Mrs. James E. Buckman
Judith M. '03 and Russell Carson
and The Carson Family
Charitable Trust
Mary Ellen McNiece '91 and
Gates Helms Hawn and the
Gates Helms Hawn Foundation
Constance Nugent McQuade '54
and The Joseph C. Nugent
Family Charitable Trust
The Andrew W. Mellon Foundation
New York City Department of
Design and Construction
Hugh C. Nurse P'80 *
Natasha Pearl and Richard R. Stowe
Rowe Family Foundation
Samuel Freeman Charitable Trust
Jim and Marilyn Simons
Lucille Zanghi and James Dow P'11

PRESIDENT'S CIRCLE

\$20,000-\$49,999

Anonymous
Debbie and Marc Cooper P'15
Anne C. Flannery '73
Mr. and Mrs. Paul A. Galiano
Edward and Mary Twomey
Greason '86
Alice and Michael Materasso P'13
Kathleen Ryan O'Grady '77
The Selz Foundation, Inc.

DEAN'S CIRCLE

\$10,000-\$19,999

Aramark Corporation
Aramark Dining Services
Aramark Management Services, L.P.
Kathleen '65 and George Austin
Dean Peter H. Baker
James F. and Alicia P. BERNMAGEL '73
Carol Berman '13
Brown Brothers Harriman and Company
and The L. W. Frohlich Charitable Trust
David Corvo and Michele Willens
Greenberg Traurig LLP
Marsha '67 and Carl Hewitt and
The Carl and Marsha Hewitt
Foundation, Inc.
Jephson Educational Trusts

Willis and Nancy King Foundation
Hope D. Knight '85
Estelle Kohn *
Ginger Lyons de Neufville '70 and
Richard de Neufville
Honorable Sallie Manzanet- Daniels '85
and Honorable Randy A. Daniels
Donna Ensign Marshall '83
Newman's Own Foundation
John and Sarah O'Connor P'15 and
The Brown Foundation of Houston
Lisa Perry '98
Margaret Mahony Prowse '61
Mary Ann Rizzo '63 *
The Rudin Foundation, Inc.
James Tisch
Helyn Quinn Waldorf '50 and
The Waldorf Family Foundation
Arthur Williams Residuary Trust

LEADERSHIP CIRCLE

\$5,000-\$9,999

Anonymous
Arun Bhatia
Andrew Mark Crabtree & Ann F.G.
Crabtree Revocable Living Trust
Educational Housing Services
Glenmede
Mary Francina Golden and
Kenneth Handal P'16
Gorton and Partners, LLC
Dr. Maureen Cahill Grant '60
Ruby M. Harvey '77 *
Eugene M. Lang Foundation
Frederick Loewe Foundation
Barbara A. '70 and
Gerald M. Loughlin, M.D.
Helen T. Lowe '55
Mr. and Mrs. Paul C. Lowerre '81
Henry E. Niles Foundation, Inc.
Michael and Andrea G. Norkus P'11
Marjorie Porter-Kuhn '86
Judith L. Robinson '90
Dr. Christine Fiorella Russo '53
Sabre Travel Network
Robert and Nurit Shamis P'14
Timothy and Shaileen Tracy
Cecilia Tudela-Montero '90 and
Fernando Montero P'13

GRIFFIN CIRCLE

\$1,000-\$4,999

Dr. and Mrs. Peter X. Adams P'12
Alfred and Binnie Adler

Anonymous (3)
Linda Allegretti
American Society For Biochemistry
and Molecular Biology, Inc
August Hoerrner and Linda Basilice-
Hoerrner '71
Richard S. Berry and
Lucy A. Commoner
Katherine Fontanetta Bonomo '61
Kathleen M. Burke, Esq. '72
BW Mechanical
Lisa Perry '98
Paul L. Ciraulo P'07
Thomas C. Clark
Sarahann Corrigan '62
Ana P. de Castro Souza and
Roberto Martins de Souza P'15
Catherine De Saint-Aignan
Gina M. DeMayo Goodenough '01
Mr. and Mrs. Robert DeSalvio P'15
Richard L. Duchano '83
Fay Brand Elliott '87
Irene Farrelly '72
Alice Riley Finley '79, P'93
French American Cultural Exchange
(FACE)
General Plumbing Corp.
Jody and John Arnhold
Julianne Thompson Grace '59
Joan Fitz Gregory '63
Jane Trudeau Griffiths, Esq. '58
Maureen Dunn Hocker '66
Mr. and Mrs. Neil Hoffman P'13 /
Carefil Bus Service, Inc. and
M&N Transportation Corp.
Lisa Tachick Hooper '95
James B. Hornor
Eileen Byrne Hughes '72
Patricia Crowley Hyland '68
Eleanor Maiella Imperato '68
Mr. Bailey W. Jackson
Carol L. Jackson and
Emile Schreiber
Mr. Gerold Klauer and
Dr. Jana F. Klauer
Konica Minolta Business
Solutions, USA, Inc.
KPMG, LLC
Dr. and Mr. Kathleen A. LeBesco
Lois Montagna Libretti '68
Dr. Patricia Marshall Lorenz '59
James H. Lynch
Joan Parlapiano Macellaro '59

Patricia Parisi Magliocco '63 /
Bulldog Ventures, Ltd.
Michele Maher '88
Maryann Paradise Mastoloni '52
Mr. Gerard A. McCallion and
Dr. Regina S. Peruggi
Joan Austin McGowan, Ph.D. '66
Joan McGreevy-Glatzi '84
Susanne Moore '90 and the Jim and
Susanne Moore Charitable Fund
Keitha Landy Murray '68
Bettye Martin Musham
Dr. Peter F. Naccarato
Mary C. Norton, Ed.D. '58
Gail Marshall O'Brien '60
Mary Anne O'Shea O'Callahan '64
Dr. Mary A. Peterson '72
Mary Lou Butke Platt '58 and
Robert Platt
David Podell, Ph.D.
Razoo Foundation
R. Christopher and
Leslie Regan P'14
Religious of the Sacred
Heart of Mary
Vivian Hintze Roche '61
Mrs. Oren Root
Marianne Vogel Round '79
RoseMarie J. Seron '91
Dr. and Mrs. Judson R. Shaver
Chris Lee Stafford, Esq. '99
Donald and Elizabeth Steckler P'10
and the Donald and Elizabeth
Steckler Charitable Lead Trust
SYMMYS - One More Reason
Gabor M. Szakal Consulting Engineers, P.C.
Sheila Barry Tacon '56
Joel and Christine Thompson P'15
Ruth L. Tudos '77
Dr. Myrna Martorana '68 Uhlich
and Dr. Roger Uhlich
Maureen Murphy Vadala '70
Virginia Finn Van Brunt '69
Gail Matthews Waddell '62
Walk4Hearing
Mrs. Marilyn L. Wilkie
Eugene and Jacqueline Williams P'12
Winkleman & Company
Winning Strategies Washington, LLC
Sheila Wishek
Mr. and Mrs. Ronald J. Yoo
Jean Engel Zavisza '58
Erwin A. Zeuschner

BLUE & GRAY CIRCLE

\$1-\$999

4Sunkids Management LLC
Beverly Clunie Abisogun '74
Mark A. Abraham and
Kathleen A. Calder P'16
Francesco and Deirdre Accorero P'12
Angela G. Acquaviva-Tunison P'17
Juan and Paula Adames P'12
Elizabeth and Paul Adzima P'15
Lindy A. Agron '02
Norberto Aguilar and Rocio Herrera P'16
Christine Akin '51
James Alexander
Eugenia Stasiukynas Alksninis '55
Eleanor Kupencow Alper '75
Mary Horan Altura '69
Javier and Julie Alvarez P'16
Alina Amaral P'14
Mary Scott Anderson '75
John and Myra Anderson P'15
Phyllis Ward Anderson '90
Ruth Janeiro Anderson '60
Catherine Andrejack P'16
Connie Anestis '64
Johanna C. Angrisani '83
Isabel M. Angulo and Jaime E. Flores P'15
Anonymous (19)
Mano Appaswamy '91
Elliott and Wendy Apter P'14
Paulo and Florinda Aquiles P'14
Anne Martin Argentieri '70
Barbara Arlia '87
Helen and William Aronstein
Maria Artime '84
Associates of Medical Arts
Michael and Abby Auerbach P'17
Hedwig Auletta '74
Jeanette Aultz '00
Johanna M. Babcock '75
L. Yvonne Bacarisse '57
Winston and Lisa Bachan P'13
Harold Baer, Jr.
Mr. and Mrs. Giedrius A. Bagdziunas
Mr. and Mrs. John Bailey P'10
Audra P. Bailey '10
William and Veronica Bailey P'16
Richard K. Baird P'16
Sylvia Baker '75
Nanette Lubow Baker '96
Gail D. Baker '86
Dean Peter H. Baker
Melanie D. Baker and
Vincent Della-Rocca P'16
Novella Baker-Brindle '76
Jacqueline Balducci P'14
Alisa Balk P'13
Nicole Wyszowski Baluk '70
Martha A. Guest Barash '81
Joseph and Kathleen Barbato P'16
Diane M. Barber and
Robert G. Mobley P'16
Jean M. Barber '88
Joyce Heffernan Barber '69
Henry I. Barbey '87
Leslie Barkman P'16
Charles P. Barnett P'16
Elsie M. Corrigan Barone '75
Mark J. Dynan and
Melisse L. Barrett P'15
Luis A. Barrios '02
Mary Jo Ekkers Barrows '64
Bernadette Barry '85
Mary O'Malley Barry '72
Annalisa Silvers Bartholomew '04
Christopher S. Bashinelli '08
Troy and Jacqueline Bathman P'16
Florence McHale Baur '57
Elizabeth Quinn Baxter '63
Alice Czubakowski Becnel '69
Bruce and Carla Bednarsky
Danny and Randi Beegle P'16
Dr. Susan J. Behrens
Paulette Belair '91
Kenneth and Randi Belanger P'14
Honore Rofrano Beletti '64
Melissa L. Belk
Ellen Wilgus Bell '73
Ruth Bendik '73
Nancy A. Benedetto '70
Helen E. Benford '81
Barbara Menstrati Benjamin '64
Ann C. Moran Berg '69
Evelyn Kaplan Berkal '92
Suzan Walls Berlin '95
John and Michele B. Berman
Alice Jacobson Bernhardt '94
Barry M. Bernstein
Frances L. Berryhill '83
Sr. Clare Bertero '65
Eilene Keller Bertsch '59
Ruth Harris Best '82
Erin Bestreich
James and Brenda Billings P'12, P'15
Genevieve Bingham '11

Edith Bishop
Ann Gleeson Black '65
Ruth Black
Patricia Flattery Blake '58
Lynn A. Blockley '87
Dr. Elisha Blond '05
Paula Bloodgood P'15
Beatrice A. Boeglin '82
Mary Betts Logan Bohm '95
Thomas and Robbie Bohmier P'14
Eileen Acheson Bohn '59
Gwen Dowdall Bolan '61
Carolyn O. Bolt
Mary Tomaszewski Bolte '69
Patricia A. Bommicino '64
Maryann Bompardito '88
Evelyn Giordano Bonanno '53
Marion Ferretti Bonomo '59
Janice L. Booth P'15
Constance Rinella Booth '68
Marylyn Fuertinger Borsari '58
Andrea and Wilfrid Bossous P'13
Johann Boteju '03
Nancy Kohl Boufford '83
Roberto Bourdier P'15
Marguerite Mulligan Boutin '55
Diana D. Boutross P'15
Thomas P. and Anita Boyle P'95
Mary Anne Boyle '92
Mary Ellen Curtin Bradshaw-
Weisbuch, M.D. '60 and the
Weisbuch-Bradshaw Aid Fund
**Mary Ellen Curtin Bradshaw-
Weisbuch, M.D. '60**
Carolyn Rocco Brady '63
Joan Morel Brakman '53
Lee and Candace Branch P'16
Martha L. Jones Branch '74
Maggie Brener '85
Patricia Ann Brennan '62
Elizabeth T. Bright '91
Bristol-Myers Squibb
Foundation, Inc.
Catherine Cook Herlihy Brogan '66
Mrs. Barbara Andrusco Brooke '67
Shirley Brooks '76
Judith Brophy '62
Mary Ellen O'Brien Brosnan '64
Alethea O. Brown '88
Joan Downes Brown '58
John E. Brown, III '83
Joseph and Valerie Brown P'17
Maxine L. Brown '78
Lorraine Fiore '58
Marie Brundage '53
Brian K. Brunius '97

Laura Eller Brunner '51
Lauren C. Bruzzone '68
Anne Higgins Buckley '66
Elinor Buckley '58
Helen M. Buckley '59
Carolyn C. Buechler '69
Joan Garrity Burke '58
Margaret Moran Burke '62
Margaret Burke-Gillespie '89
Joan Prendergast Burns '62
Barbara A. Burns, Ph.D. '63
Rosanne Trentacoste Burns '80
Patricia McBride Burrus '84
Catharine Wilson Burt '73
Amy K. Bushnell '08
Susan E. Butler '62
Hazel V. Byer '75
Mary E. Byrne '84
Patricia Prenty Byrne '85
Peggy Miller Byrne '75
Patricia Prenty Byrne '85
Rosemary Schaller Byrne '68
Joan Barton Cadette '63
Helen Flynn Caldarone '53
Christopher and Kathy Calfa P'14
Revis and Damaris Call P'16
Elizabeth D. Calvit P'16
Sarah Kelly Campbell '61
Richard and Cynthia Campi P'16
Deborah and Robert Canyock
Catherine Goodwin Capo '79
Mary Ann Dowd Cappiello '59
Barbara Lamude Cappucci '62
Maria R. Capucciati '81
Maureen O'Dea Caragliano '67
Joan Polarolo Carey '66
Frances Carlucci '74
Wanda Carney
Linda Carozza
David and Vicki Carr P'16
Bernadette Timoney Carroll '56
Eileen Monahan Carroll '61
Patrick J. Carroll
Charles and Lia Carter P'16
Marianne Casas '13
Donna L. Casellas '81
Merline Casimir '87
Mrs. Lesley T. Cassis
Florence V. Castellano '86
Frances Castiglia Scoville '71
Donna Lanthier Castillo '85
Bernard and Victoria
Castronovo P'13
Alania N. Cater '03
P. Rochelle Cavalli '90
Sylvia Cechova P'15

George and Irma Cevallos P'13
Eglin L. Chambers '75
James Michael and
Lisa Chambers P'13
Daniel Champ P'13
Dr. Roberta Chapey '64
Susan Charton-Kaplan '72
Laurie Chaumont '74
Geraldine Marsar Checkon '60
Deborah A. Chen '98
Anne Hanley Chericco '62
Mr. and Mrs. Larry Cherston
Denise A. Chesterton '98
Rita Gallagher Chiachiere '67
Lois P. Chiarello '66
Kathleen Kleinman Chilton '96
Michael and Dolly Chin P'13
Yukyong Choi
Ruhel and Akther Choudhury P'16
Umar Choudhry '97
Cotter and Deborah Christian P'02
Elaine McMahon Cipollone '63
Robert and Loretta Ciraldo P'12
Margaret L. Clancy '77
Dorothy Breitung Clare '58
Ms. Betsy Clarke P'09
Jamesine Burke Clark '74
Winifred Quinn Clark '56
Penney L. Penington Clarke '85
Mary Margaret Clarke '87
Sandra Clayton '76
Kathleen Costa Clemens '65
Susan McAndrews Clemente '80
Miriam Clifford-Hansen '79
Rosemary Coan '83
Mr. and Mrs. John Cochran P'14
Mrs. Ann G. Fitzgerald Coffey '82
Troy L. Cogburn
Deborah Savarino Cohen '80
Ms. Lorraine Cohen '01
Melissa Cohen
Marvella S. Colby, D.P.A.
Danielle Coleman '13
Rachel Coleman
Lisa J. Colletti P'15
Patricia Russell Collins '59
Patricia O'Leary Collins '70
Christel Knett Coman '77
Elena Comendador
Elisa Fogarty Comerford '70
Flora Marie Comizzoli '63
Lillian Conesa '59
Fernanda Gieffers Conheeny '59
Carol Maloney Connors '56
Marita Mulligan Conron '58
Joan Castel Conway '63

Pamela Cooney
Allison M. Cooper P'16
Patricia Dahlinger Copeland '57
Sara J. Corcoran '02
Stella M. Corcoran '90
Mary F. Cordato, Ph.D. '71
Mary Cay Corr '58
Barbara Scannell Corrigan '66
Nhora Cortes-Comerer '71
Professors John and Priscilla Costello
James J. Costello
Eric and Laura Coté P'16
Patricia A. Cotti '67
Debra and Joseph Cottone P'14
Suzanne Devlieger Coursen '74
Maryann McDermott Cowan '66
Suzanne Crabtree
Jeanne "Bamby" Colgan Craig '57
Cynara Boit Crandall '91
Veronika Kuria Crane '64
Mary Ellen Graciano Crawford '61
Anne Morrissey Cressotti '66
Maureen O'Leary Crinnion '57
Norman and Carmela Dee
Jean B. Crockett, Ph.D. '68
Rachel A. Crowl '08
Marion Haggerty Crowley '58
Mary C. Crowley '64
Edith Cruz '83
Kathleen T. Morrison Cuddihy '74
Joanne Homsy Curi '64
Teresa M. Curmi '03
Alice Corbit Curtis '78
Deborah Lee Cusack P'13
Kathryn A. Dadukian '80
Christina E. Daigneault '97
Anita (Cattone) Dalton '63
Mary Ann Daly '72
Claire and Allan Damon
Lorraine Daniels '84
Bruce and Patricia Davenport P'09
Tito A. Davila '96 and
Judith H. Jones P'15
Amy Davis P'14
Kathleen McCarthy Davis '65
Mr. and Mrs. Kenneth C. Davis P'09
Larry and Sherry Davis P'16
Mary Clark Davis '79
Kathleen Clare Daw '71
Cristina De la Cruz P'13
Ann Marie De Luca '58
Elsa de Santos '53
Judith Harvey De Vries '65
Barbara Gerard de Zorzi '64
Mary Deary '58
Janet L. DeCastro '77



Barry Commoner Environmental Lecture, A Tale of Toads and Men

*In March, the
Commoner lecture
entitled, "From Silent*

*Spring to Silent Night: A Tale of Toads and Men," was
delivered by Tyrone Hayes, Professor of Biology at the
University of California, Berkeley. Hayes' work examines the
impact of chemical contaminants on environmental health
and public health, with a specific focus on the role of pesticides
in global amphibian declines and environmental justice
concerns associated with targeted exposure of racial and ethnic
minorities to endocrine disrupters and the role that exposure
plays in health care disparities.*

*The Barry Commoner Environmental Lecture Series was
established at Marymount Manhattan College through the
gifts from the husband and wife team of Richard S. Berry
and Lucy A. Commoner. These gifts have also created The
Commoner Fund for Environmental Studies at the College.
Barry Commoner, who passed away in September 2012,
was a prominent environmental scientist, widely known as
a writer and lecturer on the relation between environmental
and energy problems and public policy.*

*Professor Hayes met with students before addressing the
larger college community and guests in the Lang Theatre.*

*The next Commoner lecture will be held on Honors Day,
March 13, 2014. Please visit the College website at
www.mmm.edu for updates.*

Anna DeCesare '63
 Mary Brew Deegan '50
 Maria Delnnocentiis
 Jacqueline Delafuente '53
 Rosemarie La Villa D'Elia '65
 Josephine B. Dellano '68
 Helen Demetrios '73
 Linda A. Denning '78
 Patricia Asaro Desiano '66
 Paula Destefano '84
 Ellen Devey
 Eileen O'Leary Devine '57
 Jane Devine '66
 Veronica R. Devine '77
 Donna Devlin '72
 Stephen M. Di Dio '07
 Eileen Mosher Dillon '81
 Lisa DiChiara '76
 Glenn Dickter and Lynn McKelvey P'13
 Laura S. Diffenderfer '02
 Wanda Harris Dillon '82
 Clarissa R. Diniz '03
 William and Teresa Dionisio P'12
 Eileen Stegman Dispenzieri '72
 Maureen Foley Dobbin '52
 Patricia Dobbs '57
 Mary Birde Doherty '71
 Theresa Doherty '71
 Joan and Felix Dolan
 Margaret Fitzpatrick Donlon '79
 Judy Rohrs Donnelly '64
 Kerry M. Donohue '97
 Patricia Dietz Donohue '64
 Nancy Herzman Doran '68
 Viriginia Dorgan, RSHM
 Jenny Sherman Dorman '97
 Thomas and Barbara Doss P'00
 Eileen Toomey Dowling '58
 Cynthia Griffin Doyle '62 and
 Laurence Doyle
 Cathleen Cahill Driscoll '66
 Patricia Lyons Drummond '62
 Krista M. Duerr '12
 Judith Crabtree Duffy '60
 Patricia Scarry Duffy '57
 Alexandra Depa Dugan '64
 Marjorie Dugas Dugas '80
 Rosemarie Levesque Dujardin '68
 Darlene Dunn P'13
 David Dunn P'13
 Marissa Dunn '05
 Gail and Michael Dunphy P'10
 Connie Dunseath-Gallagher '74
 Leslie Eagle P'06
 Joan Crampton Echause '55
 Rachel Edmond '01
 Renee Cochrane Edson '84
 Anne C. Eggleston '69
 Mr. and Mrs. Peter Ehrenberg
 Roberta E. Ehrlich
 Lauren C. Eichelberger '08
 John and Susan Eley P'17
 Joyce Biggers Ellinghaus '61
 Elizabeth Elliott '80
 Christina Handy Endicott '87
 Barbara Borges Erera '62
 Brett and Mariann G. Ernst P'13
 Jean and Mary Esteve P'16
 Dorothy Evans '75
 Mrs. Donna M. Everitt '88
 Cathryn Fadde '91
 Eleanor Koestner Fahey '58
 Kathleen Crotty Fahy '72
 Harriet D. Fallon '72
 Ramona Rodgers Faoye '83
 Mary Ann Carney Faraguna '74
 Judith Banzer Farr, Ph.D. '57
 Delia Cairney Farrell '83
 Carol M. Farris
 Fabio and Traci Fasanelli P'16
 Theresa Karlovits Fassl '73
 Jeanne Marie Fastook, M.D. '64
 Mrs. Nancy Arbusto Fazio '70
 Joyce Gauntner Fedden '53
 Elaine Reiman Fenton, Ph.D. '59
 Maria C. Fernandez '80
 Mariel A. Fernandez '06
 Rosemarie C. Ferrara '67
 Nancy Kelly Fetherston '63
 Frank Fetter P'13
 JoAnn Gill Ficca '69
 Andrew and Beth Fick P'16
 Bettina Bonanno Filardi '53
 Dorothy C. Filoramo '62
 Ellen G. Fine '82
 Lewis and Filomena Finkelman P'13
 Irene Schery Fischer '66
 Diana Cruz Fisk '79
 Elizabeth Mahan Fister '76
 Diane Fitzgerald P'16
 Eileen F. Fitzgerald '72
 Joan Hogan Fitz-Gerald '70
 Roxanne Carrasco Fitzig '75
 Jessica Fitzpatrick '03
 Sheila M. Flamm P'13
 Elizabeth Quinn Flanagan '59
 Joanne Walsh Flanagan '55
 Lynne Brennan Flanagan '64
 Michele Dibiasi Flanagan '90
 Eileen Daly Fleck '66
 Wanda Fleck
 Alice Kelly Fleckenstein '58
 Dr. Mary R. Fleischer
 Elizabeth A. Flynn
 Beth W. Fonfrias
 Miriam Forbes '76
 Kathleen Martin Ford '68
 Alecia M. Forrester
 Anne Butler Foss '78
 Mary C. Fox '54
 Mildred Freccia '68
 Dawn Freedman-Wilkins
 Patricia Little Friedman '67
 Lynn A. Frielinghaus
 Charles R. Fries
 Warren Frisia
 Alexander and Christine Froner
 Cynthia Dalrymple Frost '96
 Peggy P. Fung '03
 Paul and Donna Funicello P'16
 Mary Jo Fusaro '74
 Robert and Helene Gaisser P'15
 Veronica Cordock Gala '68
 Jeffrey A. Galant P'14
 Joan Walsh Galasso '56
 Laura J. Galgowski P'13
 George and Nicholina Galinsky P'15
 Eugene and Jennifer Gallagher P'15
 John and Rosanne Gallagher P'13
 Josephine Laza Gallagher '73
 Desiree V. Gallardo '10
 Louise Lynch Galleshaw '70
 Ann Byrne Gallivan '63
 Barbara Hagan Gambino '71
 Carolyn Gans '96
 Jaime Ryan Gans '57
 Eileen Garbe '69
 Maria Garcia P'16
 Julia Gardiner
 Clare C. Garetano '58
 Mary N. Gargan '69
 Ira E. Garr
 Linda Gatter '71
 Emily Gebauer-Stamm '68
 Jacqueline M. Geffke '87
 Linda Rothenberg Gelfond
 Rosemary J. Gelshenen
 Carol Yankus Gergel '06
 Jeffrey and Carolann Gentile P'13
 Barbara Gentile '77
 Eileen Y. Georges '80
 Carol Yankus Gergel '63
 Samuel and Laura Giannavola P'14
 Marie McAvoy Gibson '58
 Alessandra Gieffers '65
 Christopher and MacAire Gigler P'16
 Mark Gil '75
 Roseanne Spiess Giles '64
 Carol Lane Gillick '60
 Joan Boccieri Gilroy '69
 Andrew L. Girard '10
 Mariluz Asensio Giron '76
 Felicia Girona
 Marianne Githens '56
 Givenic LLC
 Gale M. Glenn '87
 Debra Ann Glenn-Byrd '01
 Maryellen Goble '76
 Myra Mahoney Goggins '59
 Jeffrey and Robyn Gold P'12
 Lila T. Gold
 Judith Goldstein
 Brenda Lavin Goldstein '63
 Cheryl Goldstein
 Marie Kennedy Gonzalez '89
 Luis and Migdalia Gonzalez P'14
 Mary Anne Hayes Gorman '75
 Kathleen Scholz Goulding '91
 Joan Rooney Graham '63
 Amy Butler Grant '83
 Gray Wolf Consulting
 Marilyn Greeley-Walsh '89
 Colton Green '06
 Jennie L. Greene '05
 Maureen Barrett Greene '62
 Patricia Dolan Greene '83
 Marion L. Greenhalgh P'16
 Fay and Dennis Greenwald
 Douglas and Donna Greymont P'13
 Maryann Englert Grieco '66
 Mary E. Cunningham Griffin '73
 Michael J. Grillot P'13
 Judith Del Rey Grimaldi '80
 Claire O'Gara Grimes '58
 Moya Groeschel '59
 Jenna Grogan
 Judith Nicholson Gruber '59
 Ann C. Gubiotti '72
 Alicia Guerin
 Anthony and Josefina Guida P'15
 Susan J. Silberfarb Gunser '82
 Paul Gunser
 Luz Maria Gutierrez '85
 Mary Masone Guzman '70
 Phyllis Sgueglia Gwatkin '67
 Kirstin Sierer Gwartz '10
 Mary Pat Cady Haas '53
 Barbara McIntyre Hack '73
 Sylvia Medina Hadley '81
 Nora Coyne Hahn '63
 Marilynn Freund Hakala '72
 Mr. and Mrs. Lewis M. Hall P'98
 Samantha Hallman '11
 Richard and Pia Halloran P'16
 Cynthia Hamilton '07
 Virginia Polise Hamilton '70
 Elaine Stracquadanio Hammers '71
 Barbara Messenger Hanley '64
 Patricia J. Collins Hannis '63
 April Hardwick
 Lindsay E. Harris
 Marie-Therese Hassell Harris '89
 Maria Englert Harris '58
 Laura Morson Harsaghy '72
 Daniel and Laurin Hart P'16
 Regina Birkner Hartley '67
 Susan A. Harvey '01
 Bush I. Harvey and Julie E. Driscoll P'16
 Carol Hasto '56
 Neil and Wendy Hathaway P'13
 Brian and Diane Hawk P'15
 Eileen Lynch Hawkins '68
 Gisele A. Hay '94
 Elizabeth A. Hayes '52
 Barbara H. Hayward '72
 Elizabeth Hayden Hazlitt '51
 Patricia Corey Heaney '62
 Celeste D'Alleva Hebert '65
 Monica I. Heckadon '09
 Elizabeth M. Hefferman '51
 Amy Bradel Heiles '95
 Marguerite Brassel Heithaus '52
 Sylvia K. Hemingway P'14
 Marilyn Hendrix '63
 Joanne Bronski Henrick '75
 Maria-Dolores Gonzalez Henriquez '98
 Gray Henry
 Robert and Mandy Hensell P'14
 Maureen Driscoll Hentrich '70
 Maritza Hernandez-Cahill '03
 Lisbeth Hernandez-Hohenstein '88
 Mark and Nancy Hetterly P'15
 Barbara Piliero Heydon '67
 Desiree Hanna Hickey '79
 Patricia Jeppson Hickey '61
 Christiane L. Ycre Hiegel '56
 Joan Finn Higgins '50
 Mary A. Hillig '58
 Germaine Hinkle
 Scott and Chantelle Hirose P'16
 Carla Hjelm '84
 John and Jean Ho P'16
 Cathleen Quinlan Hodgson '86
 Lillian Hoffer '74
 Virginia Gribbon Hogan '96
 Amelia Holl P'13
 Jim Holl
 Diane Gilbert Holland '89
 Nathaniel J. Holmes and
 Dr. Carol Valentin P'16
 Carole Horan
 Joanne Horgan '76
 Virginia A. Horn '72
 Marie T. Curran Horn '50
 Kathryn Droge Horowitz '74
 Lois G. Horowitz '89
 Arnold Horton
 Patricia Howard '73
 Karen J. Howell
 Sandra Howell '77
 Deirdre Howley '61
 Susan Lovaglio Hudick '78
 Margaret A. Hughes '88
 Rosanne Plaviak Hughes '68
 Alice Huie '95
 Kevin J. Hull
 Denise Humm-Delgado '70
 Thomas and Terry Hummel P'16
 Jere E. Hunt '09
 Deborah Hunt-Repp '82
 Donna Hurwitz
 Marjorie Battersby Hussein '74
 Theresa McKiernan Hutter '84
 Ann M. Iadicocco '63
 Eileen Rowe Iammartino '70
 Monique R. Ianos '02
 IBM Matching Grants Program
 Marjorie L. Ihrig '57
 Claire Imrich '65
 Lynn M. Janczak P'13
 Scott Italiaander '76
 Dr. Ann Di Bella Jablon
 Gordon and Angela Jackman P'14
 Jechiel Jackson '03
 Joanne Ciske Jacobs, Ph.D. '69
 Sandra '06 and Morton Jacobs
 Randi Jacoby
 Lynn M. Janczak '73
 Charles and Fredrica Janson P'13
 Howard G. Jastrow
 Janet McGregor Jeanneret '58
 Robert P. Jenkins P'12
 Regina Jennings '91
 Nora Jobson '89
 Adelaide M. Johnson '84
 Scott and Chantelle Hirose '66
 Evan C. Johnson '11
 Jacqueline Ruth Johnson '86
 Marie Johnson '87
 Mary Tracy Johnson '64
 Robin and Emily Johnson P'15
 Timothy J. Johnson and
 Michelle K. Bazin-Johnson P'16
 Michael and Staci Jones P'16
 Holly M. Jones '12
 Barry and Charles Jones P'15



Health Care Advocate for Vulnerable Delivers Rudin Lecture

This year's Rudin Distinguished Visiting Scholars Lecture was given by Deogratias Niyizonkiza, the co-founder and executive

director of Village Health Works, a grassroots non-profit organization providing compassionate, quality health care to vulnerable community members in rural Burundi. Niyizonkiza is also the protagonist of Tracy Kidder's New York Times bestseller Strength in What Remains, a book that depicts Niyizonkiza's journey from being a medical student in Burundi, to a struggling immigrant in New York City, to an Ivy League-educated global health practitioner and doctor-in-training.

Before the lecture, Niyizonkiza met with a group of approximately 20 students who had been assigned Strength in What Remains as summer reading, speaking informally about his traumatic past and his passion for the future. Later, students, faculty, staff and guests listened with rapt attention to his inspiring talk in the Lang Theatre.

After surviving a massacre at a Burundian hospital, where he was a third-year medical school intern, Niyizonkiza fled to New York in 1994. Through many struggles, he graduated from Columbia University and attended the Harvard School of Public Health, founding Village Health Works (VHW) to build a more just, peaceful, and prosperous society in Burundi and beyond. Today, VHW serves the southern half of Burundi, including thousands of recently repatriated refugees from Tanzania.

The Jack and Lewis Rudin Distinguished Visiting Scholars Program was established at Marymount Manhattan in 2000 through a grant from The Rudin Foundation, Inc. This lecture builds upon the College's commitment to academic excellence and its distinctive undergraduate programs in the liberal arts.

- Paula M. Jones '81
A. M. Judith Jordan '66
Denise O'Rourke Jordan '62
Lois A. Juall
Carol Julian P'15
Neil and Suzanne Kahanovitz P'14
Rosemary and Keith Kaholokula P'14
Grace De Fato Kamins '59
Meg Kane-Smith '81
Elizabeth A. Kapulskey P'16
Irene Schlehleim Karazin '64
Patricia O'Dea Karhuse '72
Jennifer Karim '02
Amy Mulholland Karle '57
Carol Florio Karpus '70
Rachel Kasold S'15
Dr. Ira H. Kaufman
Gurdeep Kaur
Paul and Barbara Kausch P'16
Sandra Hendley Kavanagh '64
Theresa and David Kazanowski P'16
Deirdre O'Brien Keating '56
Kathryn Stengle Kelly '53
Maureen Levinson Kelly '58
Constance Kelsey '66
Kencal Maintenance Corporation
Winifred Kender '68
Kathleen Kennedy '74
Kay S. Kennedy '75
Susan Chase Kennedy '59
Brigid Gorman Kenney '66
Margaret Herrmann Kenny '54
Adele C. Keogh '97
Pat J. Crispi and Dorothy M. Keogh P'16
Constance Roccanova
Kerwick-Kearns '57, P'81
Diane Lee Keshner '90
Carol Devine Keyes '57
Alice Keys '74
Mr. and Mrs. Henry P. Khost P'13
Earl and Patricia Kidwell P'12
Jane Knox Kieपुरa '86
Colleen Hopkins Kilcullen '84
Catherine Dunn Kiley '54
Maureen Conway Killackey '58
Myungsoon Kim '80
Allison C. Kimmel '10
Alan and Judith Kimmel P'15
Robert B. King
Douglas and Marion King P'15
Caitlin Kirklín
Margaret Kenny Kirley '59
Randy and Fran L. Kirsch P'14
Rochelle Klass '85
Catherine Barton Kleemann '73
Peggy Ann Carroll Klein '67
Angela P. Knight '84
Eric and Christine Knitel P'16
Lisa Devine Knobel '87
Margaret Tierney Knuetter '63
Mary Ann Beins Kocornik '56
Rieko Suzuki Kondo '71
Ethan and Donna Kornfeld P'15
Erin E. Kotheimer Helgers '96
Mary C. Ward Kraemer '57
Todd and Diane Krause P'15
Margaret Doyle Kreft '71
Lorraine Kresse-Hrabie '00
Bernadette Russo Kriftcher '65
Mary Ann Pleho Krolik '78
Cindi and Stuart Krost P'14
Christina M. Krupka '68
Kiirstin Kuhi '04
Katharine R. Kuhl
Mary G. Kunik '74
Sylvie Falzon Kunstenaar '83
Maureen Beggs Kunz '62
Lori Kupfer
Susanne Kurstin '02
Christine Bobrek Kuskowski '58
Theresa Cyzewski Kutz, M.D. '53
Helen Curmin Kuzmier '52
Linda M. Labash P'16
Maureen LaBorde '59
Sandra Lagana '74
Kevin and Ellen Lagasse P'15
Maureen McManus Lally '60
Deirdre Walsh Lambe '62
Rena Percell Landa '89
Marina Landman '05
Suzanne Connor Landrigan '86
Kathleen and Michael Langan P'92
Mary Hall Langenauer '56
Helen Lanigan '74
Mary Holcroft Lanning '63
Claire Larosa '86
Mr. and Mrs. David Larson P'14
Richard and Laura Latrenta P'13
Anna Liberatore Lattanzio '69
Ellen Kerr Lavagnino '68
Mary Lavin-Crerand, Ph.D. '70
Paul and Jane Lawrence P'14
Rosemary Johnston Lawton '68
Eileen McCormack Leary '56
Sharon Whalen Leary '57
Richard M. Leder
Barbara Lederer
Aleathia Lee '83
Florence H. Lee '49
Mary E. Lee '65
Gina Legnani '93
Pauline R. Leka '58
Debra and Benson Lau P'13
Margaret M. Leo '75
Jeanne Maas Leonard '53
Joanne Polguy Leonard '72
Mary Leonard '75
Ellen Parlapiano Leppa '62
Dorothy Ingram Lesnik '61
Barbara Levine
Michael Levin
Isaac and Audrey Levy P'16
George and Karen Lewis P'14
Magdalene Smith Lewis '03
Mary Ann Lewis '59
Joseph and Karen Libetti P'16
Marianne O'Leary Lieguy '64
Evelyn M. Ligon '87
Dixie Lincoln-Nichols P'14
Mrs. Ann R. Linn '81
Pearl Rosenberg Lipton '76
Tangley C. Lloyd '96 and the
Demarest Lloyd Jr. Foundation
Laurie S. Lofton P'16
Mary Ann Kenney Longo '73
Florence Defrancesco Lopas '62
Barbara O'Dwyer Lopez '56
Delys Lopez
Cesar and Mayra Lopez P'12
Ilse Bauer Lopez '89
Diana Lord '97
Janet Loudon '77
Julia B. Lowenstein '06
Cathy Lowry P'15
AD Lubow LLC
Neil Lucey
Nellita Ludington P'14
Helen Lumerman
Tertia Lynch '95
Vicki Lynn
Anna Marino Lyons '75
Tessa Macaulay '68
Michelle and Neil MacKie
Richard and Mary Madison P'13
Patricia Mulligan Maffei '55
Jessica Donohue Maguire '52
Mary Ellen McManus Maguire '58
Diana Ylstra Maher '58
Loretta Deneher Maher '62
Steven Mahack '03
Ronald and Elizabeth Makuta P'12
Constance Malandri '79
Myra Malkin
Jule Ann Maloney '70
Eileen A. Maloy '67
Sharon Mancin '03
Dale Mandelman '77
Ruth J. Mannhaupt '70

Patricia Dolan Manning '72
 Alison Manning '08
 James and Gene Manning P'14
 Robert S. Manzo P'12
 Meredith E. Marini P'13
 Ann L. Markham '92
 Thalia Marmaras '72
 Lia Lucchesi Marmo '71
 Susan Bermingham Marro '89
 Frederica Marry '83
 Sabina Martelli '70
 Anne Wacewiz Martin '56
 Eileen C. Martin '75
 Ellen Forrest Martin '65
 Jacqueline A. Martin '78
 Mary Antoinette Martin '99
 Antonia Ferraro Martinelli '98
 Josefina Martinez-Garo '71
 Minerva Martinez-Zanca '79
 Michael and Kathleen Martini P'15
 Eileen O'Connor Massa '76
 Barbara D. Massey
 Sandra Cherone Mathis '62
 Claribel Matos '85
 Betsy Durkin Matthes '96
 Vita Tallat-Kelpsa Matusaitis '64
 Ann L. Maurer '53
 Lawrence May and Deborah Beece P'12
 William May
 Marguerite Shilling Mayers '67
 William and Ladonna Mayo P'15
 Brooke Boschen McAnaney '03
 Margaret A. McCaffrey '63
 Regina Carfagno McCairns '73
 Eileen A. McCardle '88
 Eileen Pillmeier McCardle '50
 Alice O'Hara McCarter '65
 Patricia McClarnon '59
 Mary Roberts McCormack '61
 Dorothy McCoy '74
 Joan Kelly McCoy '61
 Maureen Hynes McDermott '88
 Maria Parran McDonald '70
 Doreen Soden McDonough '74
 Emily Burke McDonough '62
 Joan Greco McDougall '86
 Margaret McElhone '63
 Eileen McEntegart
 Michael and Joelle McFarland P'15
 Michael and Patricia McGill P'14
 Barbara Russo McGrath '60
 Suzanne M. McGrattan '61
 Christine Kaspak McGuire '73
 Kathleen Carberry McKee '75
 Susan McKeon '66
 Anne McKernan, O.P. '63

Laura McLarty '74
 Joyce Ortell McLaughlin '57
 Cathleen McLoughlin '60
 Frances M. Cloonan McLoughlin '58
 William McNee
 Jean (MacKey) McPadden '63
 Alice L. McVey, CSJ '56
 Brenda Mead
 Mary Jane Medler '54
 Kathleen A. Meehan '68
 Patricia Rita Meehan '57
 Joan Anne Melanson '88
 Susan Slocum Melino '75
 Christine Nevin Meloro '74
 Jeanne Kerwick Menoutis '81
 Rebecca M. Mercer-White P'11
 Kathryn Merlo '63
 Myra A. Merlo '67
 Donald and Susan Messier
 Sherryanne H. Meyer P'15
 Dr. Philip Meyers
 Joann Michaud
 Jeanne A. Michaud '67
 Bernadette Michel '90
 Hermine '77 and Sidney Migdon
 Connie Stanionis Miller '65
 Frances Anne Miller '67
 Kenneth Miller P'14
 Linda Miller-Roseman '91
 Joan Weiss Mines '73
 Mary V. Minstrell '64
 Melvina Missouri-Donovan '74
 Helen Ravert Mitchell '88
 Dr. Patricia Dooley Mitchell '64
 Mary McGrath Moclair '62
 Megan Moffit '03
 Dr. Patricia Mohr '62
 David Mold and Rebecca Fasanello
 Jonathan and Rebecca Moldover P'11
 Alvarene Murray Molland '75
 Carolyn Hug Mollica '65
 Elizabeth Nolan Monagle '53
 Virginia Grace Monahan '67
 Miguel A. Montalvo P'14
 Margaret L. Montavon '12
 Mr. and Mrs. Michael C. Montavon P'12
 Maria Kuria Montgomery '61
 Joanne Moore '65
 Norrell Moore '08
 Mr. and Mrs. Thomas M. Moore P'12
 Armando Morales '12
 Kathleen Moran '82
 Noreen D. Morris '63
 Kurt and Michelle Morrison P'16
 Elizabeth Moseman '76
 Ann Fitzgerald Mullin '58

Anne T. Murphy '62
 Bianca Cody Murphy '72
 Colleen Kade Murphy '72
 Sr. Jacqueline A. Murphy, RSHM '55
 Kathleen O'Hare Murphy '83
 Mary Ellen Hartigan Murphy '70
 Suzanne M. Murphy '87
 Marie J. Muscat '03
 Peter A. and Laura T. Naccarato
 Bernadette A. Nader '86
 Bart and Patricia Napoli P'14
 Helene S. Napolitano
 Michael and Denise Napolitano P'15
 Laura G. Nardelli '60
 Bernadette Naughten '68
 Catherine Connolly Naughten '63
 Regina Neal '74
 Bruce and Wendy Neckels P'14
 Marny Sherwin Nedlin '92
 Michelle Cantero Needle '73
 Jeffrey and Joan Nelson P'13
 Debra L. Nelson P'16
 Tim and Marlene Nelson P'14
 Carolyn Porcelli Nesbitt '67
 Dianora Niccolini '95
 Johanna T. Niemann '58
 Robert F. Nix
 Lorette Nixon '87
 Alice Paton Nixon '63
 Frances-Ann Nolan '59
 Jeanette Norris '74
 Northeast Floor Coverings, Inc
 Regina Novy '79
 Ann P. O'Brien
 Cheryl O'Brien
 Peggy O'Brien Faragasso '67
 Alison Rich O'Brien '66
 Margaret Hollman O'Brien '94
 Joan Branchini Occhipinti '58
 Mary Fullam O'Donnell '58
 Barbara Pickess O'Halloran '56
 Carol Delaney O'Handley '67
 Mary Morley O'Hanlon '75
 Annette Perrin O'Hare '58
 Mrs. Elaine P. Okonkwo '73
 Ulla Pasanen Okos '88
 Margaret O'Leary '69
 Eleanor Oliva '60
 Maricar M. Oliveros '96
 Leslie O'Malley, Ph.D. '64
 Margaret McLaughlin O'Mara '99
 Patricia O'Neal '73
 Christa N. O'Neill '98
 Mary A. Breen O'Neill '74
 Patricia Kennedy O'Prey '63
 Evelyn O'Dwyer O'Prey '61

Nilsa Orama '87
 Bobbi Amundson Ordez '03
 Thomas and Sandra O'Rourke P'11
 Catherine O'Rourke '74
 Brad and Deborah Ortega P'16
 Susan Filippi O'Shea '62
 Ostgrodd Foundation
 Mary T. O'Sullivan '68
 Julio and Wendy Otano P'14
 Jacquelyn Ottman
 Mark and Anne M. Otts
 Lisa Perkins Ougourlian '88
 Lola Owens '80
 Carolyn Pace '75
 Waleska Padillo-Castellar '01
 Ashley A. Pagano '11
 Martha Palubniak '90
 Cindie Palumbo
 Camille Difrisco Pandolfelli '57
 Drew and Linda Paren P'14
 Ann Marie McGovern Parker '61
 Christine M. Parks '80
 Anita Gammichia Parmer '76
 Theresa Timko Parsons '89
 Richard and Yvonne Patterson P'16
 JoAnne Adams Pavia '54
 Jean Samartan Pawlik '66
 Jeanne Pearson-Gray '80
 Joanne Pellegrino, Esq. '66
 Wilton and Lizandra Pena P'14
 Geraldine McDermott Pender '68
 Rudolph A. Perez
 Patricia E. Permakoff '75
 Ann P. O'Brien
 Gloria Peropat '63
 James M. Petr P'16
 Jane Byrne Petretti '71
 Angelica Petrides
 Ann Winters Petrovits '88
 Antoinette Greco Pettineo '72
 Nora Wynne Peyton '74
 Adrienne Koch Pfeifer '50
 Mary Kane Phelan '58
 Pat and Donna Piccionno P'16
 Paulann T. Pierson '66
 Michele Pierson '98
 Dr. Catherine McDonnell Pietronuto '55
 Anne Pine
 Kathryn McLaughlin Plum '60
 Danea L. Polise-Bickerstaffe '96
 Margaret Hannon Porciello '70
 Charles and Eve Poret
 Robert F. Porr '81
 Dr. Marie Heneghan Postner '62
 Eileen Kelly Potash '54
 Pamela V. Pappas Poulos '97

Luticia Povod P'16
 Eileen Herlihy Powers '59
 Jean A. Powers '85 and Darryl Brown
 Praxair Foundation
 Victoria I. Preys '99
 Frank and Celeste Price P'16
 Mr. and Mrs. Peter Price
 Benjamin and Robyn Proto P'15
 Kathleen Feuerstein Proud '86
 Jennifer L. Purdon and
 Michael J. Templeton P'15
 Kathryn Purwin '83
 Euisun Pyun '96
 Nora Eberhardt Quigley '51
 Tomasa Quiles '83
 Donna Jabbour Quinn '74
 Susanne R. Quinn '88
 Bonnie Hernandez Quintero '89
 Denise and Jonathan Rabinowitz
 Suzanne Rafferty P'13
 Anita Raisch '81
 Frances Cassara Rajotte '68
 Maria Y. Ramirez P'16
 Evelinda Ramos-Torres
 Caroline Shaw Ramsey '76
 Patricia Meany Rand '55
 Howard and Dana Raphael
 Ronald and Anita Rash P'14
 Myriam Otero Rasulo '70
 Patrick and Linda Reager P'14
 Catherine Newsome Reardon '58
 Anna Karcinsky Reddington '87
 Marianna Loudis Reep '75
 Joanna Seely Reid '53
 Linda Rehberg Reidy '80
 Jeanne A. Reilly '76
 Kathleen A. Reilly '88
 Kathleen Meenaghan Reilly '68
 Margaret Power Reilly '53
 Marjorie Gleeson Reilly '60
 Richard and Candace Reinholdt P'13
 Anne Conroy Reiser '58
 Ronald and Robin Reisman
 Francine Barrera Rexer '57
 Virginia Smith Rhatigan '66
 Joanne Love Rhoads, M.D. '72
 Rhythm Of Life Corporation,
 DBA Broadway Dance Center
 Peggy M. Richards '84
 Mary Doran Richards '58
 Muge Rinehart P'13
 Eric Riss
 Michelle Rivas '91
 Larry S. Roadman
 Eula and Vanessa Roberts P'14
 Barbara Robertson '84

Dolores B. Robinson '01
 Carol Fox Roche '58
 Dana Grunklee Rodden '08
 Cecilia Rodriguez P'16
 Liliiana E. Romero P'10
 Georgia B. Roelof
 James Rogers
 Rochelle L. Rollenhagen P'16
 Liliiana E. Romero P'16
 Rachel Munoz Romero '81
 Gloria Rosado '05
 Lorraine Rosano '62
 Janine Rose
 Margaret Akey Rosenberg '69
 Alice D. Rosenfeld
 Margaret Conroy Rosenfeld '62
 Mary Lou Adams Rosenquist '56
 Elizabeth Bleda Ross '54
 Helen C. Noonan Rossler '58
 Melinda J. Rothel '70
 Linda Rotondo '75
 James Rouhanden and Stephanie Young
 Barry and Marilyn Rubenstein and
 The Marilyn and Barry
 Rubenstein Family Foundation
 Margaret Mole Ruller '85
 Irene Pisculli Ruotolo '60
 Victoria Jersitz Russo '73
 Daniel and Dianne Rutherford P'13
 Michael and Carol Sabanos P'15
 Peter L. Sabia P'16
 Eddie and Eva Sachar P'15
 Brian and Jeanne Sadler P'16
 Mary Ann Mangini Safrey '70
 Mr. and Mrs. Brandt Sakakeeny
 Jean Sonnenblick Saklad '78
 Louis and Diane Salerno P'13
 Dominick and
 Kathleen Salvemini P'16
 Joanna A. Salviani '66
 Ann Connelly Sande '73
 Karin A. Sanders '98
 Alister Sanderson, Ph.D. P'06, P'08
 Patricia Fillo Sands '66
 Denise Sanmartin P'13
 Leonard and Nadia Santarsiero P'14
 Betty McMillan Santiago '75
 Sandra Santiago P'16
 Veronica Columbo Santilli, M.D. '62
 Wayne Santucci
 Marybeth Sarsfield '58
 Penny Breiman Savader '75
 Marilyn and Harold Savard
 Linda Winkle Savarese '63
 Jane Mraz Savino '73
 Alice Pidgeon Scarangella '69



Pre-Raphaelites Reception at National Gallery of Art

On February 17, 2013, President Judson R. Shaver, Ph.D. and Jason Rosenfeld, Ph.D. were joined by Marymount Manhattan College alumni, parents, current students and friends at a reception at the National Gallery of Art in Washington, DC. Professor Rosenfeld, distinguished chair and Professor of Art History, co-curated an exhibit for the Gallery and spoke at a lecture, Pre-Raphaelites: Victorian Avant-Garde, with his co-curators following the reception.



- Irene Schaefer '63
Glenn M. Schatell '79
Carol Jedlicka Schessler '66
Elizabeth Lynch Schiebel '63
Lauren Braver Schiller '07
Patricia Driscoll Schiller '61
Suzanne Schimatz
Clare De Santo Schlich '58
Eleanor M. Schmauser '84
Joanne Ribaud Schneider '69
Susan Schneider '04
Steven and Brenda Schneiderman P'12
Nancy T. Schnell
Theresa A. Schoenig, Ph.D. '57
Ruth Mayers Schofield '64
Georgeanne Teutschman Schopp '68
Kevin and Carol Schuele P'15
Joan Wright Schuster '68
Scott and Lucie Schuster P'15
Maryellen McGoldrick Schwarz '60
Mr. and Mrs. Gregory Scott P'14
Mary Ann Sears-Prunty '51
Carolyn E. Seergy '97
Philippe and Florence Segalot P'14
Jim and Lisa Seguin P'08
Kimberly Tzamorotas Self '88
Grace Sells '83
Joyce Seltzer
Paul Sylvester and Camille Sena P'14
Fred and Susan Senatore P'13
Dolly Sengsavang
Luann and Joseph Senisi
Lynda M. Senisi '10
John and Susan Shanley P'15
Roslyn Shapiro '96
Eileen McQuade Shapiro '74
Lynne Shapiro '77
Janet Shaw '88
Kent Redford and Pamela Shaw
Maita Orbe Shaw '65
Eileen McGivern Shea '64
Mary C. Shea '94
Richard Sheldon
Denah S. Angel Shenkman '05
Clare M. Sheridan '63
Joan Trovato Sheridan '67
Joseph and Gabriella Sheridan P'15
Joshua A. Sherman M.D. '00
Deborah Bevan Shinner '72
Malin M.B. Kallberg-Shroff '98
Dr. Teresa M. Signorelli
Donna Signorelli '03
Laura and Robert Sillerman
Cheryl B. Silver '89
Janet Silverman '81
Lisa Hall Simmons '91
- Merle L. Simon '04
Annabelle G. Simpson '69
Don and Kimberly Skewes P'16
Carolyn G. Skiffington '81
Carole Lawrence Skoulatos '66
Jonathan C. Slater
Noreen Colby Slater '61
Janet Lee Cassen Slavin
Karen Slotnick
Jesse and Beth Smith P'14
Theresa Mueller Smith '77
Tonya J. Smith P'16
Vanesia Smith '93
Paul and Robin Smith P'16
Vivienne Smith '77
Claudette James Snitiker '62
Shari Jo Snyder-Springston '90
Mr. William C. Soleau and
Ms. Christine Redpath-Soleau
Tatum D. Thomas Soo Kim '05
Randy and Dianne Sora P'13
Ronald and Patricia Sorensen P'13
Loretta Churley Spadafora '64
Penelope A. and Arnold Spangler P'11
Kristie A. Speck P'16
Joyce Spellman '85
Carola Hortmann Sprague '61
Lawton and Christine Squire P'15 /
Neil's Exterminating, Inc.
Jean M. St. Germain '66
Barbara A. Stahura '75
Eugene and Andrea Stanton
Heather M. Stanton
Jason Staten '04
Rebecca Steckler '10
Ellen C. Haney Stein '64
Margaret Unger Sternfeld '69
Gloria M. Stevens '02
Dr. Jill Stevenson
Lisa A. Stillings P'16
Linda Stocknoff
Jerome D. Stotleski
Lorraine Esselborn Stratis '65
Alexandra Stromer '12
Patricia Stryker '57
Dr. Eileen Sullivan '63
Margaret M. Sullivan '75
Mary Geraghty Sullivan '62
Maureen Naughten Sullivan '64
Jacqueline Pinto Sullivan '64
Paul and Stacey Summers P'12, P'15
Patricia Abernethy Suppa '58
Bernadette Avitabile Surak '72
Kathryn Woodington Swain '59
Shannon April Sweeney '95
John and Monica Swenson P'16
- Gisela T. Szurgot '03
Eva Nemeth Taborsky '52
Donna A. Tan P'16
Steven J. Tanenbaum '88
Zsuzsanna B. Tass '02
Judith C. Tate, Ph.D. '63
Glenn and Anneliese Taylor P'13
Ellen Teixeira
Yvonne M. Temann '81
Elenore L. Terhune '83
Mary Ruhe Tesoriero '64
Klea Theoharis '85
Dawn M. Thompson '99
TIAA-CREF
Ann R. Tierney '62
Dr. Richard Tietze
Regina P. Titus '82
Gail Tomao '71
Jeanette Flores Torres '86
Renee Toueg
Dennis and Debra Traum P'13
Nora Tscivgas '84
Louise Cerrato Tucciarone '65
Nicole M. Tuck '02
Bardor Tulku and Sonam C. Lama P'15
Mr. Randal D. Tupper
Patricia Toomey Tweedy '74
Eileen Ambrose Tynan '66
Tara Tyrrell '77
Bernice Tyson '81
Susan Krische Ujazdowski '82
Mary Ann Mansfield Vagnini '85
Hope Bahler Valbuena '83
Eduardo and Nyree Valdes P'16
Elizabeth Hallowell Valentino '59
John and Beth Van Norstrand P'15
Edward P. Van Saders '95 and
Paul B. Shusterman
Marcia Van Vechten '81
Ellen Vandrew-Wald '99
Mr. and Mrs. Richard Vanduyne
Gina Vanhentenryck P'15
Mary E. Molloy Vargas '68
Dorothy Ehrlich Vawter '84
Geraldine Sullivan Venskus '64
Edna Vereen '91
Eileen Vetri Vetri '86
Mr. and Mrs. Roger B. Vincent
Sr. Catherine Vincie, RSHM '73
Carol A. Vincie '67
Linda A. Vinson '84
William and Margaret Vliet P'16
Sandford and Maryann Von Paternos P'16
Helen (Opferman) Von Salzen '65
Joanne Schuh Vorburger '65
Nina Jansson Wadsworth '62
- JoAnn Guccione Wagner '66
Colette A. Wagner '73
Sandra Wakefield '03
LaVerne O. Walker '00
Doris E. Walker-Bennett P'13
Patricia Walsh '60
Sheila O'Boyle Walsh '66
Lorraine Livi Walton '86
Randall and Loraine Walton P'13
May Britt Wang '80
Charles and Alice Ward P'15
Yvonne Martinez Ward '78
Ann Nannery Ward '65
Professor Maryanne Cavanagh Ward '66
Ronnie Guariglia Warren '69
Richard M. Warwinsky and
Audrey I. Frankowsky P'15
Celia A. Waterman '90
Rita Ortega Waterman '64
Adrienne and Ronald Webster P'15
Leonard and Kathleen Weisgale P'16
Robert and Susan Welch P'15
Jean Wentworth
Alicia F. White '95
Ann O'Connor White '76
Beryl E. White '83
Catherine Wahn White '62
Courtney White '11
Eileen White '95
Monica Whitman '73
Joanne O'Connell Whitney '59
Richard '92 and Courtney '91 Whittington
Stephen J. Whitty and
Jacqueline B. Cutler P'16
Lynn W. Wildman
Sharon R. Wilkerson '79
Paul and Joan Wilkinson P'05
Doris D. Williams '82
Richard and Pamela Williams P'15
Ann-Marie Wilson P'16
Katherine Persico Wilson '87
Michelle Whitaker Winfrey '80
Avia Kinard Wise '78
Carol Ephraim Wise '62
Women's Civic Club of Katonah
Laura L. Wood '05
Dolores Johnson Wright '60
William and Julanne Wright P'14
Kathleen Anthony Wyman '96
Marjorie Conroe Wynne '62
Rudolph and Kathy Wyrofsky P'14
Margaret Deasy Wysock '62
Richard and Sheila Yacobush P'11
Edwina Gould Yank '53
Dennis and Kristine Yeager P'16
Ann O. Yucius

Dennis Zaia
 Corinne Holgerson Zander '79
 Muriel MacDonald Zarb '64
 Giedre Zaunius '54
 Elizabeth Zebrowski '62
 Margaret Godfrey Zell '62
 Eileen Quinn Zeppa '80
 Maureen Kelly Zuk '63

TRUSTS AND FOUNDATIONS

The Brown Foundation of Houston
 The Carson Family Charitable Trust
 Andrew Mark Crabtree & Ann F.G.
 Crabtree Revocable Living Trust
 Samuel Freeman Charitable Trust
 The L. W. Frohlich Charitable Trust
 Gates Helms Hawn Foundation
 Jephson Educational Trusts
 Willis and Nancy King Foundation
 Eugene M. Lang Foundation
 Demarest Lloyd Jr. Foundation
 Frederick Loewe Foundation
 The Carl and Marsha Hewitt
 Foundation, Inc.

The Andrew W. Mellon Foundation
 Jim and Susanne Moore Charitable Fund
 Newman's Own Foundation
 Henry E. Niles Foundation, Inc.
 The Joseph C. Nugent Family
 Charitable Trust
 Ostgrodd Foundation
 Razoo Foundation
 Rowe Family Foundation
 The Marilyn and Barry Rubenstein
 Family Foundation
 The Rudin Foundation, Inc.
 The Selz Foundation, Inc.
 Donald and Elizabeth Steckler
 Charitable Lead Trust
 The Waldorf Family Foundation
 Weisbuch-Bradshaw Aid Fund
 Arthur Williams Residuary Trust

MATCHING GIFT COMPANIES

Air Products & Chemicals, Inc.
 American International Group
 AT&T Foundation
 Bank of America Merrill Lynch
 Becton Dickinson & Company
 Bristol-Myers Squibb Foundation, Inc.
 Chevron Corporation
 Coca Cola Company
 Deutsche Bank America Foundation
 Dow Chemical Company Foundation
 Eli Lilly and Company
 ExxonMobil Foundation
 General Electric Foundation

GlaxoSmithKline Foundation
 Goldman, Sachs & Co.
 IBM Matching Grants Program
 Keefe, Bruyette, Woods, Inc.
 Marsh & McLennan Companies, Inc.
 Mass Mutua Life Insurance Co.
 Metropolitan Life Foundation
 Mobil Foundation, Inc.
 Mutual of America
 OMNOVA Solutions Foundation, Inc.
 Pfizer Foundation
 Praxair Foundation
 Science Applications International Corp.
 State Farm Companies Foundation
 TIAA-CREF
 Time Warner Inc.
 Verizon
 Wells Fargo Foundation

GIFTS IN KIND

Sr. Teresita Fay, Ph.D.
 Jacklyn Schneider
 Ira N. Smith

TRIBUTE GIFTS IN HONOR AND IN MEMORY

C. Roccanova Kerwick-Kearns '57 assault

In honor of Hope C. Andrejack
 Catherine L. Andrejack
 In honor of Irene K. Auerbach
 Estelle Kohn
 In honor of Leigh Ann Baker
 Cheryl O'Brien
 In honor of Miles Batka
 Melissa Cohen
 In honor of Carol Berman
 Barry and Marilyn Rubenstein and
 The Marilyn and Barry Rubenstein
 Family Foundation
 In memory of Jane Betz
 Maureen O'Leary Crinnion '57
 In memory of Serena D. Bobrowsky
 Joan Kelly McCoy '61
 In memory of J. William Bordeau
 Chris Lee Stafford, Esq. '99
 In memory of Catherine P. and
 Hubert J. Burke
 Kathleen M. Burke, Esq. '72
 In memory of Marion and Jim Cahill
 Maureen '60 and Patrick Grant
 In honor of Christopher Calfa
 Christopher and Kathy Calfa P'14
 In memory of Eileen Carey
 Patricia Lyons Drummond '62
 In honor of Charlie and Billie Cater
 Alania N. Cater '03

In memory of Stephen Checkon
 Geraldine Marsar Checkon '60
 In honor of the Class of 1969
 Ronnie Guariglia Warren '69
 In memory of Vera Hall Clunie
 Beverly Clunie Abisogun '74
 In memory of Candida Connolly
 Joanna A. Salviani '66
 In memory of Margaret Connolly
 Catherine Connolly Naughten '63
 In memory of Maria C. Cortes-Vergara
 Nhora Cortes-Comerer '71
 In honor of John and Priscilla Costello
 Ronnie Guariglia Warren '69
 In honor of Professor John Costello
 Regina P. Titus '82
 In honor of Priscilla Costello
 Kathleen A. Meehan '68
 In memory of Norma Cuneo
 Mary N. Gargan '69
 In honor of the MMC Dance Department
 Holly M. Jones '12
 In memory of
 Mme. Helma Marguerite de Thierry
 Judith Banzer Farr, Ph.D. '57
 In honor of Mr. & Mrs. A. Dellano
 Josephine B. Dellano '68
 In memory of Josephine Varley Doherty
 Joan Wright Schuster '68
 In honor of Lindsay M. Dunphy
 Gail and Michael Dunphy P'10
 In memory of August Eberhardt
 Nora Eberhardt Quigley '51
 In memory of Harlan & Gloria Flattley
 Steven Maihack '03
 In honor of Mary R. Fleischer
 Kerry M. Donohue '97
 In memory of Ann Quigley Frey '56
 Rita Ortega Waterman '64
 In honor of Elizabeth A. Gallagher
 John and Rosanne Gallagher P'13
 In honor of Madelyn Giannavola
 Samuel and Laura Giannavola P'14
 In memory of Robert and
 Kathryn Graciano
 Mary Ellen Graciano Crawford '61
 In memory of Susan J. Gunser
 Paul Gunser
 In honor of Class of 1967
 Regina Birkner Hartley '67
 In memory of Sr. Edmund Harvey
 Mary C. Ward Kraemer '57
 In honor of Barbara Hayward
 Nancy T. Schnell
 In memory of
 Mr. and Mrs. Alfred Hortmann

Carola Hortmann Sprague '61
 In memory of
 Dr. and Mrs. Michael J. Jordan and
 Mrs. Gertrude H. Billinger
 A. M. Judith Jordan '66
 In memory of Dorothy Kuveke '60
 Maureen Kelly Zuk '63
 In memory of Jessica A. Leder
 Richard M. Leder
 In honor of Sister Dymphna Leonard
 Alice Riley Finley '79
 Judith Crabtree Duffy '60
 In honor of Taylor A. Lewis
 George and Karen Lewis P'14
 In memory of Robert W. Ligon
 Evelyn M. Ligon '87
 In memory of Dolores Lopez
 Anne Higgins Buckley '66
 JoAnn Guccione Wagner '66
 In honor of Shelli L. Luchs
 Ellen Vandrew-Wald '99
 In memory of Josie and Harry Lynch
 Louise Lynch Galleshaw '70
 In honor of In Honor Of Jaqueline Lynch
 James H. Lynch, Jr.
 In memory of Maureen Lyons Olson
 Ginger Lyons de Neufville '70
 In memory of Mary & Henry Maloy
 Eileen A. Maloy '67
 In honor of Veronica Martin
 Mary A. Martin '99
 In memory of Hilda and Eugene
 Martinez
 Yvonne Martinez Ward '78
 In memory of Mary W. Martini
 Margaret Conroy Rosenfeld '62
 In memory of John and Florence McHale
 Florence McHale Baur '57
 In memory of Sister Raymund McKay,
 RSHM
 Judith Banzer Farr, Ph.D. '57
 Sheila Barry Tacon '56
 In honor of the Class of 2015
 Sherryanne H. Meyer P'15
 In memory of Mother Butler
 Kathleen Costa Clemens '65
 In memory of Margaret Oh
 Myungsoon Kim '80
 In memory of Allison Markee O'Leary
 Patricia O'Leary Collins '70
 Ann Connelly Sande '73
 In memory of Mildred O'Rourke
 Mildred Freccia '68
 In honor of Sean O'Rourke
 Thomas and Sandra O'Rourke
 In memory of Thomas O'Rourke

Mildred Freccia '68
 In memory of Frances M. Telsey
 Ann Marie McGovern Parker '61
 In memory of Silvia Perez-Spiess
 Roseanne Spiess Giles '64
 In memory of Muriel D. Quartararo
 James F. and Alicia P. Bender Nagel '73
 In honor of Vesta M. Rash
 Ronald and Anita Rash P'14
 In honor of Nicole M Reinholdt
 Richard and Candace Reinholdt P'13

IN HONOR OF THE RELIGIOUS OF THE SACRED HEART OF MARY

Anonymous
 Dean Peter H. Baker
 Eilene Keller Bertsch '59
 Catherine Cook Herlihy Brogan '66
 Kathleen M. Burke, Esq. '72
 Sarahann Corrigan '62
 Suzanne Crabtree
 Veronika Kuria Crane '64
 Ginger Lyons de Neufville '70 and
 Richard de Neufville
 Elaine Reiman Fenton, Ph.D. '59
 Joanne Walsh Flanagan '55
 Anne C. Flannery '73
 Dr. Mary R. Fleischer
 Alice Riley Finley '79, P'93
 Alessandra Gieffers '65
 Myra Mahoney Goggins '59
 Julianne Thompson Grace '59
 Maria Englert Harris '58
 Marguerite Brassel Heithaus '52
 Joan Finn Higgins '50
 Germaine Hinkle
 Hope D. Knight '85
 Lisa Devine Knobel '87
 Bernadette Russo Kriefftcher '65
 Margaret M. Leo '75
 Dorothy Ingram Lesnik '61
 Evelyn M. Ligon '87
 Thalia Marmaras '72
 Marsh & McLennan Companies, Inc.
 Mary Roberts McCormack '61
 Patricia Rita Meehan '57
 Maria Kuria Montgomery '61
 Mary Ellen Hartigan Murphy '70
 Ms. Natasha Pearl and Mr. Richard Stowers
 Lorraine Rosano '62
 Marilyn and Harold J. Savard
 Ellen O'Boyle Seaver presents a trophy to the winners of
 the Griffin Games at Family, Friends, and Alumni
 Weekend 2013
 Patricia Stroker '57
 Sheila Barry Tacon '56
 Ruth Wabnitz '61
 Sheila O'Boyle Walsh '66



Aspiring Performers Succeed with Marymount Manhattan Degree

Backstage magazine, the entertainment industry's publication for casting opportunities and career advice, confirmed that a Marymount Manhattan degree is a solid foundation for award-winning success on the Broadway stage. In August, MMC was ranked No. 2 on the *Backstage* list of schools with the highest number of graduates earning Tony® nominations.

Among the many talented MMC alumni contributing to the high rating are Annaleigh Ashford '05, whose performance in *Kinky Boots* earned a 2013 Tony nomination for Best Featured Actress in a Musical, and Adrienne Warren '09, who has starred in major productions of *Dreamgirls*, *Aida* and *The Wiz*.

When Warren made her Broadway debut in the musical *Bring It On*, she shared the stage with Jason Gotay '11, who was also appearing on Broadway for the first time. In September, Gotay was announced as the new alternate for the lead role in *SPIDER-MAN Turn Off the Dark*.

Gotay has attributed his early success to his training in MMC's theatre arts program, and to being on a New York campus with easy access to auditions and prime performance venues. "The college faculty is so talented and diverse that I was prepared for whatever was thrown at me during professional auditions," he said shortly after winning the role in *Bring It On*. "In my classes, one day I was doing Chekhov and Shakespeare scenes and the next day, it was *Carousel*!"

Warren joined her co-star in praising the education she received, and gave valuable advice to other young singers and actors: "Don't be afraid to work a lighting board or break down sets. Marymount Manhattan classes gave me the opportunity to learn much more than just being on center stage. Because of that exposure, I really value the work and contributions of everyone associated with putting a show together."



Board of Trustees / Administration

Officers

James E. Buckman — Chairman
Ronald J. Yoo — Secretary
Hope D. Knight '85 — Vice Chair
(*Chair Designate*)

Members

Linda Basilice-Hoerrner '71
Carol Berman '13
Thomas C. Clark
Teresita Fay, RSHM, Ph.D.
Anne C. Flannery, Esq. '73
Paul A. Galiano
Susan Gardella '79, RSHM
Mary Twomey Greason '86
Barbara A. Loughlin '70
Paul C. Lowerre '81
Sallie Manzanet-Daniels '85
Michael J. Materasso
Natasha Pearl
Judith L. Robinson '90
Judson R. Shaver, Ph.D.
President, Marymount Manhattan College
Cecilia Tudela-Montero '90
Lucille Zanghi

Trustee Emeritus

William Edwards Murray, Esq.
(*Deceased*)

Administration

Judson R. Shaver, Ph.D.
President
Marilyn L. Wilkie
*Vice President for
Institutional Advancement*
Paul Ciraulo
*Executive Vice President for
Administration and Finance*
Carol L. Jackson, Ph.D.
*Vice President for Student Affairs
and Dean of Students*
David Podell, Ph.D.
*Vice President for Academic Affairs
and Dean of the Faculty*
Melissa Richman
*Associate to the
President for Operations*
Wayne Santucci, M.B.A.
*Associate Vice President for
Administration and Finance,
and Controller*

Boren Scholarship Winner Commits to USAID

An International Studies major who spent her summer studying economic development in Bangalore, India, Katelyn Sives '13 is conducting senior-year research on sustainable development in Brazil. As part of the Boren scholarship, Katelyn will work with the United States Agency for International Development (USAID) for one year.

“Interning at MADRE [an international women’s human rights organization] enabled me to work alongside human rights experts, gave me hands-on experience with online communications, and provided perspective as I plan for my future,” Katelyn said.



Editor: Marilyn L. Wilkie
Assistant Editors: Caitlin Kirklin, Cameron Marcotte
Design: Huntsman Graphic Design

Writers: Susan Konig, Catherine Jenkins,
Anne Schutzberger
Photos: Melanie Einzig, Jerry Speier, Susan Konig
Printed by: MBS Printing



PLANNED GIVING

Making a planned gift to Marymount Manhattan is a wonderful way to provide support for the College and its mission while helping you meet your own estate planning and philanthropic goals.

We invite you to familiarize yourself with the various options and advantages by exploring the Planned Giving website. You may also compare gift options and then contact us, and we will be happy to provide you with calculations that can help you with your planning!

Marilyn Wilkie • Institutional Advancement • 212.517.0453

THE ROWLEY SOCIETY

Named for Mother Rita Rowley, the visionary founding dean of Marymount Manhattan College, the Rowley Society is MMC's recognition society for individuals who have made planned gifts for the benefit of the College. Each member of The Rowley Society receives a framed certificate in honor of his or her commitment to the school, listing in the annual President's Report (unless anonymity is requested), and invitations to special events including the annual Rowley Society luncheon.

We are very grateful to those individuals who have had the foresight to make a planned gift commitment for MMC's benefit. Marymount Manhattan will honor that trust by living up to the fine tradition and standards you expect. If you have made a gift that should be recognized with membership in The Rowley Society, please let us know. We really want to say "thank you."



MarymountManhattan

221 East 71st Street New York, NY 10021

RETURN SERVICE REQUESTED

Non-Profit
US Postage

PAID

New York, NY
Permit No. XX