



PRESIDENT'S REPORT

FISCAL YEAR 2015



MarymountManhattan

Celebrating 80 Years



MESSAGE FROM THE BOARD CHAIRPERSON AND THE PRESIDENT

What an exciting year at Marymount Manhattan! We are thrilled and honored to lead the College at this remarkable moment in its history: the celebration of 80 years of educational excellence.

Since its founding, in 1936, Marymount Manhattan has evolved from a

small urban branch campus of Marymount College in Tarrytown to a thriving independent college of nearly 2,000 full- and part-time students. But while the College has in many ways changed over its 80-year history, it has remained firmly committed to its founding ideals of empowering young people to lead lives of meaning and purpose. You will see evidence of this founding commitment throughout this report.

As we celebrate a milestone anniversary, so, too, do we celebrate other milestones in the life of the College. On July 1, 2015, Marymount Manhattan welcomed Kerry Walk as its eighth president. President Emerita Regina Peruggi and President Emeritus Judson R. Shaver were on hand at the inauguration celebration in October at The Metropolitan Museum of Art to pass the insignia of office—the Presidential Medallion, inscribed with the College’s official seal—to their successor.

The College also welcomed six new members of the Board of Trustees, who are profiled in this report. Hope Knight now leads a board that is 22 members strong and dedicated to advancing the Marymount Manhattan mission—to promote students’ intellectual

achievement, personal growth, and career development.

Other significant changes have also taken place. This past summer, the College opened the doors of a new residence hall. Located in the East Village, the Cooper Square residence hall gives our students the unparalleled opportunity to live and learn in a diverse and dynamic neighborhood just a few subway stops from the main campus. Between the residence halls at Cooper Square and 55th Street, Marymount Manhattan now houses more than 700 students. These facilities make it easier for students from all over the world to join our campus community, bringing with them a rich diversity of experiences and perspectives.

This past summer, a state-of-the-art digital media production studio within The Theresa Lang Center for Producing at 71st Street was also opened. The new production studio supports exciting new majors in Communication and Media Arts, including Digital Media and Video Production; Digital Journalism; Cinema, Television, and Emerging Media; and Public Relations and Strategic Communication.

Other new areas of study include a major in Politics and Human Rights, a minor in Dance, a Fashion concentration in Business, and a new Theatre Arts track in Performance and Digital Media. The many options for study allow students to customize their education and forge their unique pathways—a Marymount tradition for 80 years.

Enhancements of the educational experience are made possible by your ongoing commitment to the College. Thanks to your generosity, our students will become leaders in their fields, contributors to their communities, and educated citizens of the world. On behalf of the entire campus community, we thank you for your support and friendship as the College embarks on a new and exciting era filled with possibilities.

Best wishes,

Hope Knight '85
Chairperson, Board of Trustees

Kerry Walk, Ph.D.
President



TABLE OF CONTENTS

- 5 Carson Match Stimulates Giving at the College**
- 6 The Inauguration of Kerry Walk, Ph.D.**
- 10 New State-of-the-Art Studio for Communication and Media Arts**
- 12 Living On Campus Has Never Looked Better**
- 13 Education for the Incarcerated**
- 14 The Benjamin A. Gilman International Scholarship**
- 15 Expanding Academic Offerings at MMC**
- 17 In Remembrance**
- 18 Welcome, New Trustees**
- 20 Alumni Giving Statistics**
- 22 Fiscal Year 2015 Gifts and Pledges**
- 39 Financial Statistics for Fiscal Year 2015**
- 40 Planned Giving: The Rowley Society**
- 41 Remembering Dr. Marvelle S. Colby**
- 42 Donor Dinner**
- 43 Mission & Founding**

ON THE COVER: The inauguration of Kerry Walk, Ph.D., as the eighth president of Marymount Manhattan College on October 23, 2015, at The Metropolitan Museum of Art. Brigid Driscoll '54, RSHM, Ph.D., and Board Chairperson Hope Knight '85 flank President Walk, with Trustees Judith L. Robinson '90, Barbara Loughlin '70, and Michael J. Materasso P'14 visible behind them.

On April 5, 2016, philanthropist, entrepreneur, and environmentalist Paul Polizzotto came to MMC to speak about “Creating Impact: The Successes and Challenges of a Social Entrepreneur.” The Theresa Lang Theatre was packed with students, faculty, staff, alumni, and other community members who came to hear him speak. Paul is the founder and president of CBS EcoMedia, which harnesses the power of advertising and channels it into tangible social change. He was also the honoree at our 2016 Annual Scholarship Benefit and the recipient of the prestigious Marymount Manhattan College *Visionary Award*.



CARSON MATCH STIMULATES GIVING AT THE COLLEGE



In fall 2015, generous benefactors and longtime Marymount Manhattan supporters Judith '03, H'13 and Russell Carson pledged \$2.7 million in a 1:2 match: for every two dollars that donors give MMC, the Carsons will give one dollar. This extraordinary challenge, known as the Carson Match, is intended to sustain the educational excellence for which the College is known and to stimulate giving across many constituencies.

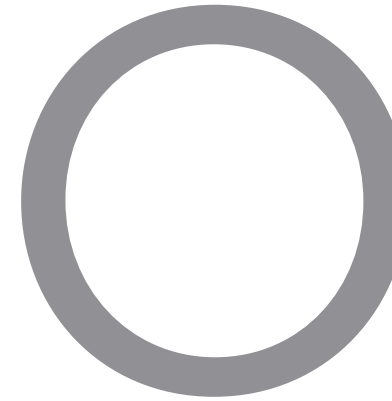
The theme of the Carson Match is *Now More Than Ever*, a phrase used by President Kerry Walk in her inaugural address, *Light and Liberty*. “We need you now more than ever, and we invite you to come home,” President Walk told a packed house of MMC alumni, friends, and distinguished guests at the inauguration celebration in October 2015.

The goal of Phase 1 of the Carson Match, *Welcoming Our New President*, is a total of \$1 million. We are pleased to announce that this

goal has been surpassed thanks to the generosity of alumni, trustees, friends, parents, faculty, and staff who have proudly shown their commitment to the College. Contributions to the Annual Fund support student scholarships, distinguished faculty chairs, academic initiatives, campus improvements, and other areas of greatest need.

The College extends heartfelt gratitude and appreciation to the Carsons for their continued partnership with, and dedication to, Marymount Manhattan—and to all who have been motivated by the Carsons to give.

For more information or to make a contribution, please contact Kyle Nachreiner, director of annual giving, at (212) 517-0454 or knachreiner@mmm.edu.



n Friday, October 23, 2015, the chilly morning air on the Upper East Side was abuzz with excitement and anticipation. At the iconic Metropolitan Museum of Art, guests arrived to celebrate a presidential inauguration. Kerry Walk, Ph.D., had been in office since July, but this ceremony marked her official installation as the eighth president of Marymount Manhattan College.

THE INAUGURATION OF KERRY WALK, PH.D.

Students, alumni, and invited guests packed the beautiful Grace Rainey Rogers Auditorium, located inside the museum's Egyptian wing. Hundreds more joined remotely via live-streaming online video. On stage, the Orbit Brass Quintet piped up with a rendition of the Allegro movement of Handel's *Water Music*, and the procession began: MMC faculty, trustees, and visiting dignitaries approached the stage dressed in traditional academic regalia.

The ceremony included greetings and remarks by friends of the College, as well as performances by talented MMC students and alumni. The symbolic centerpiece of the event was the Presentation of the Insignia of Office. Representatives from the faculty, staff, student body, alumni, Board of Trustees, and the College founders—the Religious of the Sacred Heart of Mary—each passed the Presidential Medal to one another, representing all the groups within the MMC community who affirm the choice of Kerry Walk as MMC's new president.

“Together, as a committed and forward-thinking college in partnership with a great city, we hold high a bright light for future generations of educated citizens of the world.”

— from President Walk's Inaugural Address, *Light and Liberty*

Following President Walk's inspiring inaugural address, *Light and Liberty*, the ceremony closed with a captivating performance of the alma mater, “Hail Marymount Manhattan,” with the original words sung to new music composed for the occasion by Broadway composer Frank Wildhorn H'14. This great fusion of tradition and innovation, past and future, perfectly represented the new energy that President Walk brings to MMC.
Welcome, President Kerry Walk!



“From its founding, Marymount Manhattan was intended to be a different kind of college—not isolated from the world, but a part of it—not removed from the city, but deeply embedded in it.”

— from President Walk’s Inaugural Address, *Light and Liberty*

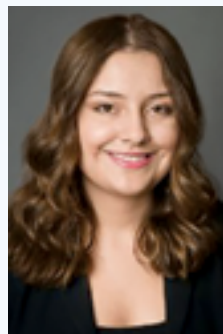
NEW STATE-OF-THE-ART DIGITAL MEDIA PRODUCTION STUDIO FOR COMMUNICATION AND MEDIA ARTS

In summer 2015, the Division of Communication and Media Arts installed a fully integrated digital media production studio located within The Theresa Lang Center for Producing. The innovative, multipurpose workspace boasts a television control room, a television studio, and an audio recording facility—all of which feature advanced equipment on par with leading professional spaces.

This essential upgrade provides students pursuing careers in journalism, communications, and digital media with a competitive edge as they prepare for internships and professional opportunities in the media capital of the world.



MMC STUDENT AWARDED PRESTIGIOUS SCHOLARSHIP



Emily Garcia '17 has been awarded the Benjamin A. Gilman International Scholarship by the U.S. Department of State's Bureau of Educational and Cultural Affairs.

The Benjamin A. Gilman International Scholarship Program offers grants for undergraduate students to pursue academic studies or credit-bearing, career-oriented internships abroad. Such international exchange is intended to better prepare U.S. students to assume significant roles in an increasingly global economy and interdependent world.

Emily, a Brooklyn native and 2014 Watson Fellow, is pursuing a double major in International Studies and Business Management at MMC. She participates in the Emerging Leaders Program and the Volunteer Income Tax Assistance Program, and is on the Dean's List. With the help of the Gilman Scholarship, she is spending the spring 2016 semester in Thailand, working with women and children.



EXPANDING ACADEMIC OFFERINGS AT MMC

BUSINESS

The Division of Business established two distinct tracks to reflect the interests of a creative student body in a world-class business setting.

The Bachelor of Science (B.S.) majors in Finance, Entrepreneurship, International Business, Management, and Marketing prepare graduates for careers in organizations ranging from nonprofits to media conglomerates to major financial institutions.

A new Bachelor of Arts (B.A.) in Business combines students' interests in media, the arts, social justice, or fashion studies with a comprehensive business education.

COMMUNICATION AND MEDIA ARTS

The Division of Communication and Media Arts will offer four new **Bachelor of Arts (B.A.)** programs in September 2016.

Cinema, Television & Emerging Media will immerse students in the theory, history, and industrial practice of film and television. Students will take classes that focus on film, technique, writing for television, emerging technologies, and the American and global television industries.

Digital Journalism will help students develop their research, writing, reporting, and editing skills. The program will also

teach students how to adapt to an ever-changing field by working within multiple media platforms.

Digital Media and Video Production will allow students to develop the skills for media-based storytelling through video and emerging media production.

Public Relations and Strategic Communication is geared toward students interested in the techniques and practices of advertising, promotional communication, social media practices, and professional communication.

HUMANITIES AND SOCIAL SCIENCES

In the fall of 2015, a new **Bachelor of Arts (B.A.)** program in the Division of Humanities and Social Sciences was offered to first-year students.

Courses taught in the new **Politics and Human Rights** major offer a wide range of perspectives on the changing forces of governance and culture that shape our lives in a political/economic context. As a complement to the knowledge and skills students gain in the classroom, off-campus opportunities (such as internships, field study, and service learning) allow students to take advantage of Marymount Manhattan's location in one of the largest, most diverse cities in the world.

O PIONEERS



Marymount Manhattan College Theatre Production Workshop of *O Pioneers* (fall 2014), a musical adaptation of Willa Cather's classic 1913 novel conceived by Darrah Cloud (Book & Lyrics) and Kim D. Sherman (Music), with direction by Professor Kevin Connell, musical direction by David Sisco, choreography by Professor Anthony Ferro, scenic design by Professor Ray Recht.

IN REMEMBRANCE

MARY TWOMEY GREASON '86

The entire Marymount Manhattan College community mourns the loss of alumna and former trustee Mary Twomey Greason.

Mary Twomey Greason graduated *magna cum laude* from Marymount Manhattan in 1986 with a BA in art history and went on to a life of service to the College. She encouraged alumni to become involved and give back to the College, and demonstrated tremendous generosity and leadership in her work on the Board of Trustees from 1995 to 2004, and again from 2005 to 2014.

Mary lit up every room she entered and was a friend to all. She will always be remembered for her warm manner, incisive intellect, and abiding dedication to the College and its students, faculty, and staff.

In Mary's honor, her family has suggested contributions to the Mary Twomey Greason Endowed Scholarship at Marymount Manhattan College.

TERESITA FAY, RSHM, PH.D.

In October 2014, Marymount Manhattan College lost one of its most loyal and devoted board members, Teresita Fay, RSHM, Ph.D.

Sr. Teresita was a member of the Religious of the Sacred Heart of Mary for 65 years. Her wise guidance and talent for bringing people together were the hallmarks of her service to the College.

Sr. Teresita was a trailblazer who worked for Arthur Andersen & Co. for 20 years, where she served as director of internal and client training. She was eventually made a principal in the company. After retiring, she consulted with small nonprofit organizations.

The loss of Sr. Teresita is profound, and those who knew her will never forget her devotion to the College and her love for the MMC community.



Mary Twomey Greason '86



Teresita Fay, RSHM, Ph.D.

WELCOME, NEW TRUSTEES!

M

arymount Manhattan College is pleased to announce the election of six new members to the Board of Trustees. The Board oversees the mission, fiscal integrity, and educational quality of the College. The new trustees collectively bring significant experience in education, business, and organizational leadership to their new roles, and the College is proud to have them on board.



PATRICIA AGNELLO '83 is currently the chief human resources officer & employment counsel for Insight Portfolio Group LLC (formerly Icahn Sourcing LLC), an entity formed and controlled by Carl C. Icahn. Ms. Agnello previously held senior human resources positions at several other high-profile organizations, including Integro Insurance Brokers, North Fork Bank (now Capital One), PriceWaterhouseCoopers, and Exxon. She serves on the board of directors of Trump Entertainment

Resorts, Inc. and PSC Metals, Inc., is on the Group Advisory Board of Blue Cross and Blue Shield of Alabama, and has served as an arbitrator for the Civil Court of the City of New York. Ms. Agnello is an associate adjunct professor of professional responsibility at NYU's Stern School of Business. She holds a JD from St. John's University School of Law, an MBA in human resources management from Adelphi University, and a BA in liberal arts from Marymount Manhattan College.



HELEN DEMETRIOS '73 received a BA in mathematics and economics, *magna cum laude*, from Marymount Manhattan College and an MA in mathematics from SUNY-Stony Brook before embarking on a distinguished career in business and entrepreneurship. After holding positions in the Olivetti Corporation and JP Morgan early in her career, Ms. Demetrios launched one start-up company and then another, which sold international banking software to major banks throughout the world, including Citigroup, JP

Morgan, Barclays, HSBC, and many more. After selling her second start-up in a bidding war to Misys, a billion-dollar British software company, Ms. Demetrios worked for Misys for several years as chief operating officer and board member of its new banking division. A Marymount Manhattan trustee from 2006 to 2007, she currently serves as a board member of Big Arts, a cultural center in Sanibel, Florida.



ABBY FIORELLA '83 is general auditor of MasterCard, where she is responsible for providing independent and objective assurance on the design and effectiveness of the company's risk management, internal controls, and governance processes. Ms. Fiorella also sits on the company's Risk Management Committee and is a member of its Global Diversity and Inclusion Council. Prior to her current role, Ms. Fiorella was responsible for MasterCard's global

compliance programs, including ethics, anti-corruption, anti-money laundering, trade sanctions, and privacy and data protection. Before joining MasterCard, Ms. Fiorella served as a director in KPMG's forensic services practice and was an assistant district attorney in New York County. Ms. Fiorella earned a JD, *magna cum laude*, from New York Law School. She received a bachelor's degree in Fine Arts, *magna cum laude*, from Marymount Manhattan College.



MICHAEL G. STEWART, MD, MPH is a renowned otolaryngologist who serves as professor and chairman of the Department of Otolaryngology-Head and Neck Surgery at Weill Medical College of Cornell University, and otolaryngologist-in-chief at New York-Presbyterian Hospital/Weill Cornell Medical Center. He also serves as vice dean of the Medical College and the E. Darracott Vaughan, Jr., MD senior associate dean for clinical affairs. Dr. Stewart leads the Center for the Performing Artist at NYP/

Weill Cornell. The author of more than a hundred publications, he is currently editor-in-chief of *The Laryngoscope* journal. He is a director of the American Board of Otolaryngology and the American Academy of Otolaryngology-HNS, where he has received a Presidential Citation and two Distinguished Service Awards, along with induction into the Academy of Distinguished Educators at Baylor College of Medicine. Dr. Stewart earned his bachelor's degree in engineering, *summa cum laude*, at Vanderbilt University, his MD at Johns Hopkins University School of Medicine, and his MPH at the University of Texas School of Public Health.



EDWARD VAN SADERS '95 is the chief strategy officer of Regional News Network (RNN), the nation's fast-growing premium news content producer, where he is responsible for creating, communicating, executing, and sustaining the company's strategic initiatives. RNN programs and manages news channels across linear, online, and OTT platforms, reaching more than seven million homes throughout New York, New Jersey, and Connecticut. Previously, Mr. Van

Saders served as chief financial officer of AccuWeather, following six years at RNN in the CFO role. He has also served in senior leadership positions at the entertainment brand Heavy.com and the environmental media company EcoMedia (now a part of CBS). Earlier in his career, he held positions at NBC-Universal, Fox News Network, and the Jim Henson Company. He earned a BFA in acting, *cum laude*, with a minor in musical theatre and a certificate in nonprofit management from Marymount Manhattan College.



CATHERINE VINCIE '73, RSHM, is a member of the Religious of the Sacred Heart of Mary (RSHM) and became a provincial councilor of the Eastern American Province in August 2015. She received a BA in piano performance from Marymount Manhattan College (certified by the Mannes College of Music), an MDiv from Yale Divinity School/Institute of Sacred Music, and a PhD in liturgical theology from the Catholic University of America.

Sr. Catherine has taught liturgical theology in several graduate schools while also working as a church musician. From 1995 to 2015, she served as professor of liturgical and sacramental theology at the Aquinas Institute of Theology and Ministry in St. Louis. Sr. Catherine served as vice president/president of the North American Academy of Liturgy in 2011-12. A frequent lecturer, she has written more than 45 publications and is currently editing a book on Catholic preaching.

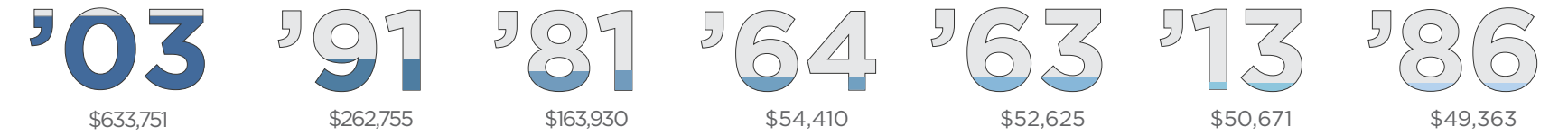
ALUMNI GIVING STATISTICS

CLASS	DONORS	GIFTS	TOTAL GIVEN
'50	4	5	\$10,275.00
'51	1	1	\$100.00
'52	5	5	\$2,370.00
'53	9	15	\$9,774.06
'54	9	10	\$25,514.54
'55	8	10	\$4,445.00
'56	18	19	\$4,750.00
'57	13	18	\$1,930.00
'58	22	25	\$7,405.00
'59	15	21	\$4,122.50
'60	28	33	\$8,703.15
'61	18	20	\$13,425.00
'62	26	31	\$4,871.00
'63	17	18	\$52,625.00
'64	31	33	\$54,410.00
'65	33	46	\$22,184.21
'66	31	35	\$9,918.85
'67	25	36	\$30,508.50
'68	19	21	\$7,220.00
'69	19	19	\$4,900.00
'70	32	47	\$29,754.70
'71	17	25	\$23,654.71
'72	27	30	\$12,455.00
'73	19	24	\$30,436.28
'74	25	39	\$5,085.00
'75	31	41	\$3,264.25
'76	11	11	\$525.00
'77	18	19	\$38,239.24
'78	6	6	\$660.00
'79	15	16	\$6,292.00
'80	17	19	\$2,130.00
'81	15	20	\$163,929.81
'82	16	17	\$1,345.00

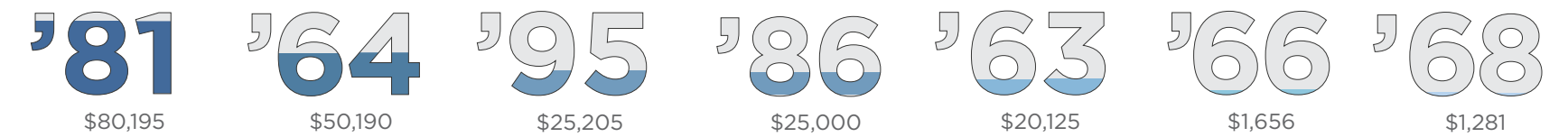
CLASS	DONORS	GIFTS	TOTAL GIVEN
'83	22	27	\$13,139.83
'84	12	13	\$4,212.50
'85	11	13	\$10,240.00
'86	15	20	\$49,362.50
'87	18	19	\$3,350.00
'88	15	16	\$2,005.00
'89	12	16	\$1,425.00
'90	18	28	\$31,129.70
'91	8	11	\$262,755.00
'92	5	8	\$385.00
'93	7	7	\$404.93
'94	5	5	\$1,595.00
'95	13	13	\$21,834.95
'96	14	14	\$919.88
'97	12	13	\$1,145.00
'98	10	11	\$10,460.00
'99	6	7	\$355.00
'00	9	9	\$1,595.00
'01	10	12	\$3,850.01
'02	12	15	\$1,515.02
'03	16	23	\$633,751.00
'04	17	20	\$1,450.16
'05	34	35	\$6,275.70
'06	14	15	\$1,125.30
'07	6	6	\$350.14
'08	12	12	\$560.32
'09	2	2	\$70.00
'10	7	8	\$550.20
'11	12	12	\$505.44
'12	16	17	\$645.48
'13	17	21	\$50,670.65
'14	14	14	\$450.98
'15	4	5	\$52.00

ALUMNI GIVING HIGHLIGHTS

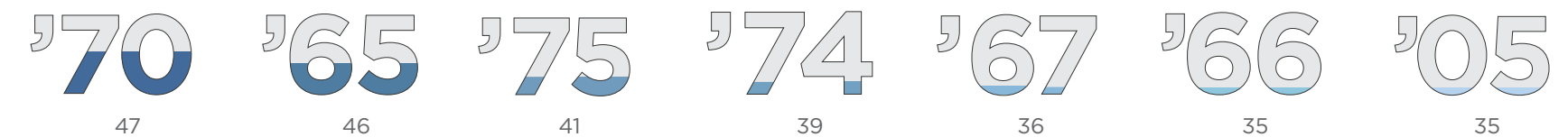
HIGHEST CASH & STOCK DONATIONS



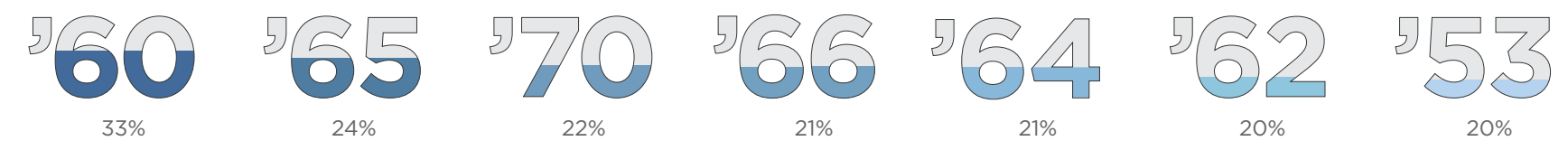
HIGHEST PLEDGE DONATIONS



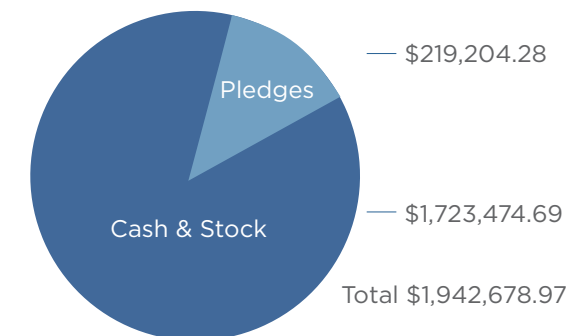
HIGHEST NUMBER OF GIFTS



HIGHEST CLASS DONATION PERCENTAGES



GIVING RATIOS FOR FY2015



FISCAL YEAR 2015 GIFTS & PLEDGES

TRUSTEE SOCIETY

(\$50,000 and Up)

Carol '13 and Walter Berman
Gloria Spinelli Bohan '63 and
The Dan and Gloria
Bohan Foundation
Nancy and James E. Buckman, H'05
Judith M. '03, H'13 and Russell L.
Carson and The Carson Family
Charitable Trust
Mary Ellen McNiece Hawn '91
and Gates Helms Hawn
Joan M. Kelleher Heaney '64
Ursula and Paul C. Lowerre '81
and The Lowerre Family
Charitable Trust
Valerie Rowe, Ph.D. and John
Rowe, Ph.D. and the
Rowe Family Foundation
Lisa and Bernard Selz and
The Selz Foundation, Inc.
Marilyn and James Simons, P'11
and The Simons Foundation
Watson Foundation
Lucille Zanghi and James Dow, P'11

PRESIDENT'S SOCIETY
(\$25,000-\$49,999)

Carol and Isaac Chera, P'15
Anne C. Flannery '73
Paul A. Galiano
Lisa Tachick Hooper '95
and David Hooper

Constance Nugent McQuade '54
and The Joseph Nugent
Family Charitable Trust
Marjorie Porter-Kuhn '86 and
David Kuhn

LEADERSHIP SOCIETY

(\$10,000-\$24,999)

Anonymous
Kathleen '65 and George
Austin
Rose M. Badgeley Residuary
Charitable Trust
Linda Basilice-Hoerrner '71 and
August Hoerrner
The Brown Foundation of
Houston
Joseph and Valerie Brown, P'17
David Corvo and Michele Willens
Educational Housing Services
Edward and Mary Twomey
Greason '86*
Greenberg Taurig LLP
Marsha Hakim Hewitt '67 and
Carl H. Hewitt
Jephson Educational Trusts
Nancy and Willis King and
the Willis and Nancy King
Foundation
Barbara Lehman
Anna and Peter Levin
Barbara Lynch Loughlin '70 and
Gerald M. Loughlin, M.D.
Barbara Geyer Marinan '67

Donna Marshall '83 and The
Marshall Family Foundation, Inc.
Alice and Michael Materasso, P'14
Dr. Peter F. Naccarato
Kathleen Ryan O'Grady '77
Lisa Perry '98 and Richard Perry
Margaret Mahony Prowse '61
Judith L. Robinson '90 and
Stephen Brodsky
The Rudin Foundation, Inc.
Merryl and James Tisch and
The James S. & Merryl H.
Tisch Foundation, Inc.
Cecilia Tudela-Montero '90 and
Fernando Montero, P'13
Ruth L. Tudos '77*
The Waldorf Family Foundation
Arthur Williams Residuary Trust
Joanne Woodward and the
Joanne Woodward Fund

FOUNDER'S SOCIETY

(\$5,000-\$9,999)

Asmita and Arun Bhatia, and
Cooper and 6th Property,
LLC, and The Arun I. & Asmita
Bhatia Family Foundation
Dean Peter H. Baker
Chartwells Dining Services
Ruth E. Calhoun Facer '05
The Glenmede Trust Company, NA
Richard and Pia Halloran, P'16
Henry E. Niles Foundation, Inc.
HiTouch Services

Jaishri Kapoor
Hope Knight '85 and Steven
Umlauf, M.D.
Lynn C. Koeltl '67
Eugene M. Lang and the Eugene
M. Lang Foundation
Frederick Loewe Foundation
Louis A. Martarano
Dr. Christine Fiorella Russo Esq. '53
and Victor D. Russo
Robert and Nurit Shamis, P'14
Dr. and Mrs. Judson R. Shaver
Timothy and Shaileen Tracy, and
Gerard B. Tracy Associates
Erwin and Margaret Zeuschner

71ST STREET SOCIETY

(\$1,000-\$4,999)

Aetna Inc.
Joseph Alexander Foundation
American Portfolios Financial
Services
Maria and Michael A. Attardo P'15
Gail Ahye
Robert and Natalie Bailess, P'11
Virginia A. Bean
Richard S. Berry and Lucy A.
Commoner
Susan Beyrle, P'16
Marion Ferretti Bonomo '59 and
Thomas Bonomo
Rita M. Bodie '74
Karen Bow '93

Mary Ellen Curtin Bradshaw-
Weisbuch, M.D. '60
Joan Morel Brakman '53
Bettina and Franz H. Burda
Kathleen M. Burke, Esq. '72
The Charitable Foundation of the
Burns Family, Inc.
Paul L. Ciraulo and Patti Manzi, P'07
Betsy Clarke, P'09
Anthony and Susan Cooch, P'13
Debra and Marc Cooper, P'15
Elynore Clark Cucinell '56
Catherine and Patrick
De Saint-Aignan
Frances and Robert DeSalvio, P'15
Irene Farrelly '72
Dorothy C. Filoramo '62, P'90
Nanci Gabay-Fischer
General Plumbing Corp.
Michelle Getz
Constance and James P. Gilmore
Maureen Brandon Goldsborough '66
Gina M. DeMayo Goodenough '01
Gorton and Partners, LLC
Joan Rooney Graham '63
Dr. Maureen Cahill Grant '60
Jane Trudeau Griffiths, Esq. '58
Consuelo R. and Kevin R.
Hackett, P'17
Jennifer Harrison and Luis
Gomez, P'18
Barbara H. Hayward '72
Christiane L. Hiegel '56
James B. Hornor
Marilyn Henry Howell

Eileen Byrne Hughes'72 and
Christopher Hughes
John and Cheryl Hunt
Eleanor Maiella Imperato '68 and
Pascal Imperato
Carol L. Jackson, Ph.D. and
Emile Schreiber
Carol Florio Karpus '70
Kathleen Lake Kiernan '70
KPMG, LLC
Maureen McManus Lally '60
Patricia Jonas Laufer '85
Kathleen A. LeBesco, Ph.D. and
John Shields, Ph.D.
Helen T. Lowe '55
James H. Lynch
Alice Barrett Mack '65
Dr. Carolyn Makinson
Jule Ann Maloney '70
Ellen Forrest Martin '65
Barbara D. Massey
Maryann Paradise Mastoloni '52
Dr. Regina S. Peruggi, Ph.D. and
Gerard A. McCallion
Joan McGreevy-Glatzl '84
Susan and Michael V. McKay, P'15
June A. Mercer '66
Jeanne A. Michaud '67
Frances Anne Miller '67
Roy Miller
MJM Productions
Marcy Monroe and Charlie
Curtis, P'17
Anthony Morigerato
Suzanne M. Murphy '87

Keitha Landy Murray '68
Bettye Martin Musham
New York City Dance Alliance
Tracy O' Brien
Mary O'Shea O'Callahan '64
Sarah and John O'Connor, P'15
Once For All, Inc.
Aldo Papone
Natasha Pearl and
Richard Stowe
Professor Mary A. Peterson '72
Nora Wynne Peyton '74
Mary Lou Butke Platt '58 and
Robert Platt
David Podell, Ph.D.
Ramona's Model & Talent LLC
Religious of the Sacred
Heart of Mary
Vivian Hintze Roche '61
Mrs. Oren Root
Margaret Akey Rosenberg '69
Harriet Rosenberger
Marianne Vogel Round '79
Kevin and Carol Schuele, P'15
RoseMarie J. Seron '91
Donald and Elizabeth Steckler, P'10
Linda Stocknoff
Attilio Meucci and SYMMYS -
One More Reason
Sheila Barry Tacon '56
U.S. Security Associates, Inc.
Dr. Myrna Martorana Uhlich '68
and Dr. Roger Uhlich
John O. Utendahl
Maureen Murphy Vadala '70

Consecutive donor *Deceased



FACULTY ACCOMPLISHMENTS



WHY STUDY RELIGION?

A second edition of *A Beginner's Guide to the Study of Religion* (Bloomsbury Publishing), by Associate Professor of

Religious Studies **Bradley Herling**, was released this year. The book argues for the relevance of studying religion in the world today, as well as providing an approachable, comprehensive introduction to the field.

Professor Herling observes: "The MMC students in Philosophy and Religious Studies were very much the inspiration for this textbook. Their interest in theories in the study of religion, and their willingness to contend with the pressing issues in the field, motivated me every step of the way."

FISCAL YEAR 2015 GIFTS & PLEDGES

71ST STREET SOCIETY (Continued)

Virginia Finn Van Brunt '69
Waldorf Risk Solutions, LLC
Mr. and Mrs. Paul T. Walker
Joanne O'Connell Whitney '59
Marilyn L. Wilkie
Leslie and Ronald J. Yoo
Jean Engel Zavisza '58

1936 SOCIETY (\$100-\$999)

Anonymous
804 Lexington Avenue Restaurant Inc.
Beverly Clunie Abisogun '74
Kathleen A. Calder and Mark A. Abraham, P'16
Paul J. Adzima '15
Lindy A. Agron '02
AHI Travel
David Alhadeff
Lori M. Allan, P'15
Juanita Abramson Alleyne '71
Mary Horan Altura '69
American Society For Biochemistry and Molecular Biology, Inc
Craig C. Anderson, P'15
John and Myra Anderson, P'15
Ruth Janeiro Anderson '60
Johanna C. Angrisani '83
Isabel M. Angulo and Jaime E. Flores, P'15
Max G. Ansbacher

Helen and William Aronstein
Dr. Sara Arthur
Diane Ascione Horowitz '65
Athina Leka Aston '56
Jeanette Aultz '00
Marie Bacigalupo '65
Audra P. Bailey '10
Veronica M. Bailey
Richard K. Baird, P'16
Gail D. Baker '86
Melanie D. Baker, P'16
William F. Baker
Madelyn Saxer Bambace '52
Martha A. Guest Barash '81
Theresa and Thomas Barresi, P'15
Bernadette Barry '85
Mary O'Malley Barry '72
Thais Barry
Gail L. Baumrin
Florence McHale Baur '57
William and Judith Bautz
Denise Duross Beckerle '54
Alberta Candia Begley '61
Dr. Susan J. Behrens
Esther Liebers Belger '56
Lois '66 and William Benedetto
Nancy A. Benedetto '70
Janet Benestad '69
Helen E. Benford '81
Barbara Mentrasti Benjamin '64
Christina Bennett
John and Michele B. Berman, P'11
Claire Lespier Berryhill '83
Eilene Keller Bertsch '59
John Bingham
Rachel Black '69

Lynn A. Blockley '87
Beatrice A. Boeglin '82
Eileen Finnegan Bohan '64
Mary Betts Logan Bohm '95
Gwen Dowdall Bolan '61
Mary Tomaszewski Bolte '69
Reed and Susan Bonadonna
Evelyn Giordano Bonanno '53
Katherine Fontanetta Bonomo '61
Constance Rinella Booth '68
Lindsay Borden '04
Gina A. Bosch, P'15
Martha L. Jones Branch '74
Elizabeth T. Bright '91
Mrs. Penelope M. Brouder
Jennifer Brown
Wendy and Ralph Brown, P'16
Harriet R. Brudner '86
Elinor Buckley '58
Helen M. Buckley '59
Carolyn C. Buechler '69
Christopher A. Burda
Gina and Fran Burrage, P'16
Susan E. Butler '62
G. Ann Kerwin Byrne '58
Patricia Prenty Byrne '85
Peggy Miller Byrne '75
Rose Caiola and Manhattan Movement and Arts Center
Marie-Ketler Cajuste '01
Damaris and Revis Call, P'16
Jacqueline Calloway '87
Stephanie and Mitch Reiter, Camp Towanda
Carol Camper and John Hartje
Richard and Cynthia Campi, P'16

Mary Ann Dowd Cappiello '59
Barbara Lamude Cappucci '62
Maria Carland '65
Theresa Carlson '65
Bernadette Timoney Carroll '56
Maleeka N. Carroll '04
Mrs. Lesley T. Cassis
Frances Castiglia Scoville '71
Sr. Joan R. Catherwood, RSHM
Roseann Garretto Celauro '72
Saverio and Mary Cereste
Amy Cherston
Rita Gallagher Chiachiere '67
M. Lorraine Dziadowicz Chiorazzi, M.D. '66
Chipotle
Kwija Lee Cho '83
Mary Louise Tallent Chudd '65
Robert and Loretta Ciraldo P'12
Citizens Bank
Margaret L. Clancy '77
Thomas C. Clark
Mary Margaret Clarke '87
Thomas A. Coelho '06
Marvelle S. Colby, D.P.A.*
Beverly A. Coleman '82
Linda M. Colley-Balicki '75
Congregation of St. Savior
Marie Maggio Connelly '67
Joan Castel Conway '63
Stella M. Corcoran '90
Francine F. Cornelius '85
Susan Corson
Nhora Cortes-Comerer '71
Professors John and Priscilla Costello

Consecutive donor *Deceased



WHY I GIVE I GIVE BECAUSE

"Marymount Manhattan College provides a well-rounded and community-oriented educational experience for students. Thanks to the help of faculty and Career Services, I completed four internships while at MMC, gaining a wealth of hands-on experience that helped me land my current job at Spike TV. Moreover, the passion that MMC students have is infectious and inspiring. Nothing brings me greater joy than giving back to my alma mater."

—CHRISTINA MCDONALD '15

Therese A. Costigan '95
Laura and Eric Cote, P'16
Patricia A. Cotti '67
Joseph and Debra Cottone, P'14
Marilyn and James Cracchiolo
Cynara Boit Crandall '91
Veronika Kuria Crane '64
Jean B. Crockett, Ph.D. '68
Joan T. Cropley '85
Mary C. Crowley '64
Kathleen T. Morrison Cuddihy '74
Christina E. Daigneault '97
Charlene E. Dash '00
Bruce and Patricia Davenport, P'09
Ellen R. Davis '65
Kathleen McCarthy Davis '65
Mary Clark Davis '79
Kathleen Clare Daw '71
Amilia Day and Robert Day, P'15
Lorena A. De Filippis '69
Barbara Gerard de Zorzi '64
Janet L. DeCastro '77
Adele DeCruz '73
Norman and Carmela Dee

Maria DelInnocentiis
Christina and Paul Del Balso
Josephine B. Dellano '68
Melanie D. Baker and Vincent Della-Rocca, P'16
Barbara DeMartino DeSimone '59
Jane Desmond
Paula Destefano '84
Ellen Devey
Patricia A. Devine '83
Mironda Deweese '13
Sharon Wampetich Diamandis '83
Laura S. Diffenderfer '02
Carol C. Diop '05
Eileen Stegman Dispenziera '72
Theresa Doherty '71
Kerry M. Donohue '97
Patricia Dietz Donohue '64
Nancy Herzman Doran '68
Anne W. Doss '00
Eileen Toomey Dowling '58
Patricia Lyons Drummond '62
Judith Crabtree Duffy '60
Margaret Duffy

Patricia Scarry Duffy '57
Marjorie Dugas '80
Carolyn Mitchell Duggan '60
Joan Findley Dunham
Leslie Eagle, P'06
Carolyn and Jonathan Eaton
Joyce Moore Eckart '65
Rachel Edmond '01
Camille Ehrenberg
Lauren C. Eichelberger '08
John and Susan Eley, P'17
Laura Elkins
Barbara Borges Erera '62
Dorothy Evans '75
Patricia Claffey Evins '56
Mary Anne Kump Ewald '54
Kathleen Crotty Fahy '72
Sylvie Falzon-Kunstenaar '83
Roseanne Farley '70
Judith Banzer Farr, Ph.D. '57
Carol M. Farris
Jeanne Marie Fastook, M.D. '64
Joyce Gauntner Fedden '53
Bonnie Feinberg

Dr. Elena Ferrer '03
Anthony Ferro '01
Alice Riley Finley '79, P'93
Katherine Firpo '63
Irene Schery Fischer '66
Constance FitzGerald
Eileen F. FitzGerald '72
Joan Hogan Fitz-Gerald '70
Claire Fitzpatrick '72
Joanne Walsh Flanagan '55
Wendy R. Flanagan
Alice Kelly Fleckenstein '58
Dr. Mary R. Fleischer
Anne Butler Foss '78
Anita Walsh Frey '51
Patricia Little Friedman '67
Lynn A. Frielinghaus
Cynthia Dalrymple Frost '96
Dr. Laura R. Fry '84
Mary Jo Fusaro '74
Jeffrey A. Galant, P'14
George and Nicholina Galinsky, P'15
Eugene and Jennifer Gallagher, P'15
John M. Gallagher

Consecutive donor *Deceased

FISCAL YEAR 2015 GIFTS & PLEDGES

1936 SOCIETY (Continued)

Louise Lynch Galleshaw '70
 Kenneth R. Gardner '10
 Clare C. Garetano '58
 Anne M. Clarke Garger '80
 Elizabeth Hahn Gassman '67
 General Electric Foundation
 The Generosity Trust
 Eileen Y. Georges '80
 Carol Yankus Gergel '63
 Laura and Samuel Giannavola, P'14
 Mark Gil '75
 Carol Lane Gillick '60
 Mariluz Asensio Giron '76
 Marianne Githens '56
 Givenik LLC
 Gale M. Glenn '87
 Timothy Goff
 Myra Mahoney Goggins '59
 Alice Mullarkey Golden '62
 Cheryl Goldstein
 Google Matching Gifts Program
 Julianne Thompson Grace '59
 Teresa Granados
 Thomas and Lydia Gray
 Marilyn Greeley-Walsh '89
 Jennie L. Greene '05
 Maryann Englert Grieco '66
 Michael J. Grillot, P'13
 Judith Del Rey Grimaldi '80
 Lois Ajuba Grinage-Bartley '75, P'90
 Ann C. Gubiotti '72
 Alicia Guerin '01
 Luz Maria Gutierrez '85
 Sylvia Medina Hadley '81

Diane Fowler Hagen '66
 Marianne Halperin '54
 Kathy Hamill Gorman '64
 Wayne Hamilton
 Kimberly Hamilton-Lam and
 Mr. David Lam '08
 Elaine Stracquadiano Hammers '71
 Barbara Messinger Hanley '64
 Barbara Peet Hanssen '55
 Dr. Renee L. Harrangue
 Maria Englert Harris '58
 Laurin E. Hart, P'16
 Regina Birkner Hartley '67
 Phyllis Hartstein
 Ruby M. Harvey '77*
 Corey Hathaway '13
 Robert M. Hawkins
 Bruce and Holly Hayden, P'17
 Eileen Hayden
 Elizabeth A. Hayes '52
 John A. and Bliss Hayes
 Elizabeth M. Heffernan '51
 Sylvia K. Hemingway P'14 and
 Alexandra Nicklas '14
 Zvia Hempling, P'12
 N. Patrick Hennessey, M.D.
 Lynn Henry '92
 Maureen Driscoll Hentrich '70
 Catherine M. Herrera '90
 Barbara Piliero Heydon '67
 Michele L. Hickey
 Patricia Jeppson Hickey '61
 Patrick Hickle, P'19
 Carla Hjelm '84
 John and Jean Ho, P'16
 Maureen Dunn Hocker '66

Lillian Hoffler '74
 Virginia Gribbon Hogan '96
 Mary Ann Billings Holland '69
 Lois G. Horowitz '89
 Arnold Horton
 Sandra Howell '77
 Deirdre Howley '61
 Maureen E. Hoyte '86
 Mr. Andre Hunter
 Patricia Crowley Hyland '68
 Eileen Rowe Iammartino '70
 Marjorie L. Ihrig '57
 Sandra Ivers Vince '89
 Ryan Jackson '04
 Diana Jacobs Kalman
 Barbara G. Jepson '74
 Nora Jobson '89
 Adele Johnson '88
 Marie Johnson '87
 Mary Tracy Johnson '64
 Christopher and Debbie Jones, P'12
 Paula M. Jones '81
 Mary McKeon Jordan '66
 Beatrice McMorro Kackmann '60
 Grace De Fato Kamins '59
 Irene Schlehlein Karazin '64
 Teresa A. Kardoulis '92
 Jennifer Karim '02
 Dr. Ira H. Kaufman
 Sandra Hendley Kavanagh '64
 Mr. and Mrs. David W.
 Kazanowski, P'16
 Deirdre O'Brien Keating '56*
 Constance Kelsey '66
 John Kenny
 Adele C. Keogh '97

Pat J. Crispi and Dorothy M.
 Keogh, P'16
 Constance Rocanova
 Kerwick-Kearns '57, P'81
 Myungsoon Kim '80
 Judith and Alan Kimmel, P'14
 Douglas J. King
 Caitlin Kirklin
 Katherine L. Komendowski '80
 Ellen Mary O'Brien Kosmowski '60
 Charisse and John R. Kovas, P'17
 Bernadette Russo Kriftcher '65
 Mary G. Kunik '74
 Lori E. Kupfer
 Deirdre Walsh Lambe '62
 Jeannette A. Landa
 Kathleen and Michael Langan, P'92
 Mary Holcroft Lanning '63
 Vilma Basello Lara '73
 Ellen Kerr Lavagnino '68
 Mary Lavin-Crerand, Ph.D. '70
 Melissa M. Kuba Lazo '07
 Guillermo Leal '83
 Eileen McCormack Leary '56
 Sharon Whalen Leary '57
 Alvin I. Lebensfeld
 Dyana Dumberger Lee '79
 Gina Legnani '93
 Margaret M. Leo '75
 Mary Leonard '75
 Ellen Parlapiano Leppa '62
 Dorothy Ingram Lesnik '61
 Alice N. Levin
 Bonnie Levin Friedman
 Sean D. Lewis '95
 Wendy Li

Lois Montagna Libretti '68
 Marianne O'Leary Liegey '64
 Evelyn M. Ligon '87
 Ann R. Linn '81
 Tangley Lloyd '96 and the
 Demarest Lloyd Jr.
 Foundation
 Katherine Lohiya
 G. Adrienne Lopez '80
 Diana Lord '97
 Dr. Patricia Marshall Lorenz '59
 Jean Walsh Lovejoy '66
 AD Lubow LLC
 Virginia Cheasty Lucey '65
 Alexandra M. Lyons
 Barbara-Ann Leuteritz Lyons '61
 Kelly Mack
 Michelle and Neil Mackie
 Jessica Donohue Maguire '52
 Michele Maher '88
 Myra Malkin
 Josephine D'Angelo Maloney '57

Jule Ann Maloney '70
 Ruth J. Mannhaupt '70
 Patricia Dolan Manning '72
 Cameron Marcotte '13
 Margaret Mariani '89
 Anna Marques '63
 Maleeka N. Marshall '04
 Eileen C. Martin '75
 Mary Antoinette Martin '99
 Kathleen Martin Ford
 Minerva Martinez-Zanca '79
 Michael and Kathleen Martini, P'15
 Patricia Weekes Mascari '56
 Sandra Cherone Mathis '62
 Betsy Durkin Matthes '96
 Marguerite Shilling Mayers '67
 Regina Carfagno McCairns '73
 Dr. Daniel McCammon, P'18
 Eileen Pillmeier McCardle '50
 Mary Roberts McCormack '61
 Dorothy McCoy '74
 Joan Kelly McCoy '61

Maureen Hynes McDermott '88
 Maria Parran McDonald '70
 Doreen Soden McDonough '74, P'05
 Emily Burke McDonough '62
 Joan Greco McDougall '86
 Patricia A. McGivern '62
 Joan Austin McGowan, Ph.D. '66
 Christine Kaspak McGuire '73
 Kathleen Carberry McKee '75
 Susan McKeon '66
 Cathleen McLoughlin '60
 Frances M. Cloonan McLoughlin '58
 McNulty Outdoors, Inc.
 Alice L. McVey, CSJ '56
 Kathleen A. Meehan '68
 Patricia Rita Meehan '57
 Susan Slocum Melino '75
 Leanne Mella '72
 Maryanne Coleman Mendelsohn '61
 Carlos Mendez-Penate
 Rebecca M. Mercer-White, P'11
 Kathryn Merlo '63

Myra A. Merlo '67
 Bernadette Michel '90
 Diane Mihnevich '82
 Connie Stanionis Miller '65
 Joyce Miller
 Lee Miller
 Joan Weiss Mines '73
 Melvina Missouri-Donovan '74
 Dr. Patricia Mohr '62
 David Mold and Rebecca
 Fasanello
 Jonathan and Rebecca
 Moldover, P '11
 Alvarene Murray Molland '75
 Virginia Grace Monahan '67
 Ruby L. Bowles Monds '97
 Mr. and Mrs. Michael C.
 Montavon, P'12
 Michael Moore
 Armando Morales '12
 Joan Sadrianna Morgan '72
 Noreen D. Morris '63*

Consecutive donor *Deceased



FACULTY ACCOMPLISHMENTS

ONE MAN, TWO GUVNORS

Professor of Theatre Arts **Kevin Connell** received a BroadwayWorld.com/Columbus Award for Best Direction of a Play for *One Man, Two Guvnors* at the Weathervane Playhouse in Ohio.



The play is an update of the 1743 comedy *Servant of Two Masters* by Carlo Goldoni. Playwright Richard Bean and his collaborators “gave themselves permission to allow their imagination to re-create the themes of Goldoni’s play to put their stamp on it, but it’s not a literal adaptation,” Professor Connell told The Columbus Dispatch. “It’s a comedy of errors and a door-slamming farce.”

Last year, Professor Connell won the same award, for his direction of *To Kill a Mockingbird* at the Weathervane Playhouse.

Credit: DiBlasio Photography

FISCAL YEAR 2015 GIFTS & PLEDGES

1936 SOCIETY (Continued)

Jon Morrison
 Kerry and Michael Morrison, P'14
 Noelle O'Callaghan Morrison '95
 Kathleen Moscati '70
 Patrick Muldoon
 Ann Fitzgerald Mullin '58
 Sr. Jacqueline A. Murphy, RSHM '55
 Kathleen O'Hare Murphy '83
 Mary Ellen Hartigan Murphy '70
 Mary Jo Robb Murphy '60
 Rita G. Murray
 Michael and Denise Napolitano, P'15
 Helene S. Napolitano
 Laura G. Nardelli '60
 Bernadette Naughten '68
 Regina Neal '74
 Carolyn Porcelli Nesbitt '67
 Frances-Ann Nolan '59
 Deborah and Jon Nolting, P'15
 Mary C. Norton, Ed.D. '58
 Alison Rich O'Brien '66
 Cheryl O'Brien
 Margaret Hollman O'Brien '94
 Peggy O'Brien '67
 Joan Branchini Occhipinti '58
 Jeanne O'Connor '70, P'11
 Sharon A. O'Dea '86
 Mary A. O'Donnell
 Mary Hehir O'Donnell '61
 Mary Fullam O'Donnell '58
 Carol Delaney O'Handley '67
 Deborah Landon O'Kain '97
 Leslie O'Malley, Ph.D. '64
 Margaret McLaughlin O'Mara '99

Catherine O'Rourke '74
 Thomas and Sandra O'Rourke, P'11
 Susan Filippi O'Shea '62
 Gerald Osmond
 Anne and Mark G. Otts, P'13
 Susan '89 and Douglas Padgett, M.D.
 Rachel Palacios, P'17
 Michael Palmer
 Martha Palubniak '90
 Linda and David Paresky
 Christine M. Parks '80
 Theresa Timko Parsons '89
 Richard and Yvonne Patterson, P'16
 Jean Samartan Pawlik '66
 Erica and David Payne '87, P'16
 Carmen Marques Perez '86
 Rudolph A. Perez
 Margaret Carey Pero '62
 Jane Byrne Petretti '71
 Antoinette Greco Pettineo '72
 Paulann T. Pierson '66
 Dawn Pinnock '04
 Margaret Hannon Porciello '70
 Jean A. Powers '85 and
 Darryl Brown
 Montserrat Prades-Martynek '88
 Presbyterian Women of
 Hitchcock Church
 Benjamin and Robyn Proto, P'15
 Susan and Peter Purdy
 Nora Eberhardt Quigley '51
 Susanne R. Quinn '88
 Bonnie Hernandez Quintero '89
 Helen and Brian Rafferty, P'14
 Patricia Meany Rand '55
 Elizabeth C. Rantze '05

Dr. Vandana Rao and Ashish Dev
 Marie and Richard Raquet, P'16
 Rebecca C. Regan '15
 Robert and Alesia Regan-Hughes, P'08
 Joanna Seely Reid '53
 Linda Rehberg Reidy '80
 Margaret Power Reilly '53
 Mary A. Reinhardt and
 Mark E. Larsen, P'15
 Joanne Love Rhoads, M.D. '72
 Edie and Michael Rice, P'17
 Ridgewood Savings Bank
 Eleonore Riedmann '60
 Nancy Pipia Rini '64
 Robert P. Rittereiser
 Larry and Betsy Roadman
 Dolores B. Robinson '01
 Carol Fox Roche '58
 Dana Grunklee Rodden '08
 Kurt and Shyanne Roeloffs
 James Rogers
 Gloria Rosado '05
 Lorraine Rosano '62
 Mrs. Janine Rose and
 Mr. Norbert Benaiche, P'15
 Jason Rosenfeld, Ph.D.
 Margaret Conroy Rosenfeld '62
 Melinda J. Rothel '70
 Francesca B. Runge
 Victoria Jersitz Russo '73
 Ellen Todaro Ryan '88
 Eddie and Eva Sachar, P'15
 Mr. and Mrs. Brandt Sakakeeny
 Joanna A. Salviani '66
 Karin A. Sanders '98
 Alister Sanderson, Ph.D., P'06, P'08

Wayne Santucci
 Jane Mraz Savino '73
 Irene Schaefer '63
 Elaine Schiano and
 Adrian Patten, P'17
 Patricia Driscoll Schiller '61
 Barbara E. Schneider '88
 Susan Schneider '04
 Ruth Mayers Schofield '64
 Eric Schuander
 Maryellen McGoldrick Schwarz '60
 Brenda Sebald, P'14
 Carolyn E. Seergy '97
 Jim and Lisa Seguin '08
 Kimberly Tzimirotas Self '88
 Joyce and Isadore Seltzer
 Sentinel Benefits and
 Financial Group
 Beverly J. Shackley '00
 Margaret Ward Shaff-McKenna '60
 Susan and John M. Shanley, P'15
 Eileen McQuade Shapiro '74
 Maita Orbe Shaw '65
 Eileen McGivern Shea '64
 Vivian Young Sheehan '50 *
 Clare M. Sheridan '63
 Joan Trovato Sheridan '67
 Joseph and Gabriella Sheridan, P'15
 Joshua A. Sherman M.D. '00
 Nava R. Siltan, Ph.D.
 Annabelle G. Simpson '69
 Carolyn G. Skiffington '81
 Kent Skipper
 Adrienne M. Smith '80
 Paul and Robin Smith, P'16
 Eva J. Sokal '97

Christine Redpath-Soleau
 Lourdes Soto '88
 Loretta Churley Spadafora '64
 Lourdes Robles Spagnoli '79
 Penelope A. and
 Arnold Spangler, P'11
 Jennifer Spenner '98
 Ruth Farley Staben '70
 Jo Ellen D. Stache '73
 Barbara A. Stahura '75
 Ellen C. Haney Stein '64
 Judith Steinberg
 Gloria M. Stevens '02
 Lorraine Esselborn Stratis '65
 Merrile and John Stroud, P'16
 Antonio E. Suarez '98
 Jacqueline Pinto Sullivan '64
 Paul and Stacey Summers, P'12, P'15
 Deanna and John Supple, P'16
 Bernadette Avitabile Surak '72
 Lynn Surry
 John and Jacquelyn Sykes, P'05
 Victoria Symonds and
 David Morrison, P'16
 Janet B. Tauro, P'17
 Michael J. Templeton, P'16
 Elise Tenney '97
 Shirley A. Thrower '06
 Sr. Mary Tierney '02
 Judge Jaime E. Tijerina, P'17
 Gail Tomao '71
 Bernadette Dunne Toomey '65
 Laura Tropp
 Louise Cerrato Tucciarone '65
 Randal D. Tupper
 Brigidann Lloyd Turadek '70

Aura Medina Turkel '82
 Patricia Toomey Tweedy '74
 Eileen Ambrose Tynan '66
 UBS Financial Services Inc.
 Susan Krische Ujazdowski '82
 Martine L. Van Milders, P'17
 Edward P. Van Sadlers '95 and
 Paul B. Shusterman
 Mr. and Mrs. Richard Vanduyne
 Dorothy Ehrlich Vawter '84
 Robert and Virginia Vieira, P'16
 Gail Matthews Waddell '62
 Colette A. Wagner '73
 William Waldorf
 Walk4Hearing
 Diana Paulsen Walker '06
 Patricia and John Walsh '60
 May Britt Wang '80
 Charles and Alice Ward, P'15
 Ann Nannery Ward '65
 Professor Maryanne
 Cavanagh Ward '66
 Mark Warkala
 Rita Ortiga Waterman '64
 Linda Weber '83
 Kathleen and Leonard
 Weisgable, Jr., P'16
 Eileen White '95
 Joyce Jones White '76
 Kelley and Dwayne Wiggins, P'15
 Sharon R. Wilkerson '79
 Mr. and Mrs. Terrence R. Wilkinson
 Paul and Joan Wilkinson, P'05
 Doris D. Williams '82
 Richard and Pamela Williams, P'15
 Kerstin L. Winkler

Avia Kinard Wise '78
 Carol Ephraim Wise '62
 Christina Elliott Wolpers '96
 Women's Civic Club of Katonah
 Edwina Gould Yank '53
 Giedre Zaunius '54
 Eileen Quinn Zeppa '80
 Maureen Kelly Zuk '63

DONORS

(\$1-\$99)

Anonymous
 Dawn Adams '06
 Alison Aguiar '84
 Danielle Alberico '06
 Denise Alicea '05
 Eugenia Stasiukynas Alksninis '55
 Nuha A. Alsaïdi '07
 Annette Paretti Alsop '68
 Giustina Amante '05
 Doreen Anderson '76
 Ellen Anderson '75
 Phyllis Ward Anderson '90
 Paula Angus, P'18
 Zaidat F. Animashaun '13
 Mano Appaswamy '91
 Ethel M. Archer '90
 Heather Ardrey '06
 Jonathan Arevalo '12
 Julissa M. Arias '03
 Barbara I. Arlia '87
 Jocelyn McNally Armstrong '76
 Olivia H. Armstrong '14
 Eric Arriola '11
 Barthelemy Atsin '02

Consecutive donor *Deceased



Credit: Amy Farber

FACULTY ACCOMPLISHMENTS



MAPPING LIVES ONTO PAPER

Assistant Professor and Director of the Academic Writing Program **Tahneer Oksman** released her first book, *How Come Boys Get to Keep Their Noses?*

(Columbia University Press), a study of seven contemporary female Jewish cartoonists.

Professor Oksman reflects: "If you had asked me almost 10 years ago, when I was starting out as a Ph.D. student in English literature, what I planned to focus on for the next decade or so, the answer would have been, easily, women's literature. Not memoir, not comics. Most certainly not Jewish women's comics."

She sees her research as a journey to reclaim her Jewish self, even as she risks pigeonholing herself as a "Jewish writer." Her book is a fascinating and bold intersection of the academic and the personal.

FISCAL YEAR 2015 GIFTS & PLEDGES

DONORS (Continued)

Dana and Danny R. Atwell, P'16
 Hedwig Auletta '74
 Lisa Bachan, P'13
 Nicole D. Bailey '05
 Karen Dreidel Baker '01
 Nanette Lubow Baker '96
 Sylvia Baker '75
 Novella Baker-Brindle '76
 Alisa Balk, P'13
 Jessica S. Balk '13
 Faith E. Ball '12
 Rachel A. Balma
 Blake P. Balsamo '15
 Bernadette C. Baly '96
 Emily Barbato '15
 Joyce Heffernan Barber '69
 Nancy P. Barber, P'17
 Kimberly Barker '05
 Leslie Barkman, P'16
 Matthew J. Barnett '11
 Sarah B. Barnett, P'17

Michelle Barnish, P'17
 Elsie M. Corrigan Barone '75
 Dianne P. Barrale, P'15
 Troy and Jacqueline Bathman, P'16
 Claudia Pomponi Batten '72
 Penelope Beal '72
 Patricia S. Nacion Becker '92
 Ajeia Brown Beebe '05
 Linda Bejoian
 Honore Rofrano Beletti '64
 Ellen Wilgus Bell '73
 Alexa Bender
 Mike Bennet
 Linda Bent-Koerick
 Robert W. Berenis, P'13
 Ann C. Moran Berg '69
 Evelyn Kaplan Berkal '92
 Sr. Clare Margaret Bertero, OSF '65
 Melissa S. Best '14
 Ruth Harris Best '82
 Nelson Betancourt
 Pamala M. Billman '14
 Miranda A. Bishop '14

Megan K. Black '08
 Patricia Flattery Blake '58
 Michelle R. Blumstein '14
 Maryann Bompertito '88
 Nancy Kohl Boufford '83
 Norka Boyer '93
 Thomas P. and Anita Boyle, P'95
 Kathleen C. Boyle '05
 Mary Anne Boyle '92
 Deirdre Boylston '59
 Lee and Candace Branch, P'15
 Tracy L. Bray, P'15
 Elizabeth Hannigan Brazaitis '67
 Elizabeth Shanley Breslin '70
 Laurie M. Briggs, P'16
 Catherine "Cook" Herlihy Brogan '66
 Eileen M. Brooks '79
 Mary Ellen O'Brien Brosnan '64
 Kathleen Brower '98
 Alethea O. Brown '88
 Jean Coleman Brown '76
 Marcia Brown '76
 Maxine L. Brown '78

Loretta Nicoletta Bruccoleri '62
 Samuel Brune '14
 Susan Brunnett Munson
 Holly Bucci, P'18
 Kathleen O'Connor Buchanan '75
 Charles B. Buckel, P'15
 Elizabeth A. Burbridge '88
 Alicia Burnette
 Joan Pine Burns '83
 Joan Prendergast Burns '62
 Ruth Burt '74
 Amy K. Bushnell '08
 Mary E. Byrne '84
 Mary Heavey Byrnes '81, P'12
 Lisette B. Caesar '95
 Kathleen Pach Cahill '66
 Elaena Calamia, P'16
 Roger R. Calderon '04
 Christine Kelly Cankes
 Catherine Goodwin Capo '79
 Helen L. Capone, P'16
 Barbara Cappucci
 Maria R. Capucciati '81

Joan Blangiardo Caputo '77
 Maureen O'Dea Caragliano '67
 Kelly Burke Cardall '97
 Renee D. Cardoza '12
 Kathryn M. Carlino '12
 Joanne Carlucci '00
 Christopher R. Carmona '04
 Caitlin and Richard Caro, P'12, P'17
 Diane S. Carroll '02
 Noreen L. Carruthers
 Alexis and Michael J. Casey, P'16
 Mary Frey Cashin '69
 Angie L. Cassar '01
 Eileen Cassella '59
 Sara M. Castano '07
 Florence V. Castellano '86
 Tiffany Castillo '13
 Ana C. Castro '12
 Bernard and Victoria Castronovo, P'13
 Mary E. Catalano '94
 Francena Chalfant '81
 Daniel Champ '13
 Dr. Roberta Chapey '64
 Susan Charton-Kaplan '72
 Valerie Chatson-Nicot '02
 Laurie Chaumont '74
 Geraldine Marsar Checkon '60
 Deborah A. Chen '98
 Denise A. Chesterton '98
 Lois P. Chiarello '66
 Maria Chiba '02
 Maureen Kavanagh Chilton '83 and
 Richard Chilton
 Georgianna Chin '82
 Lois E. Chizak '85
 Muriel Kingston Christianson '70

Jenny H. Chu '95
 Jane T. Ciancimino '82
 Emily Clark '05
 Tara M. Tyrrell Clark '77
 Miriam Clifford-Hansen '79
 Connie Cobb
 Ann G. Fitzgerald Coffey '82
 Danielle R. Cogan '07
 Deborah Savarino Cohen '80
 Gloria Cohen '79
 Elyse and Matthew Cohen, P'14
 Megan J. Cohl
 Beatrice Budnick Coleman '76
 Diomaris Collado '05
 Lisa J. Colletti, P'15
 Patricia O'Leary Collins '70
 Christel Knett Coman '77
 Christine Combs '64
 Mary McGuire Connell '62
 Carol Maloney Connors '56
 Denise Montminy Connors '75
 Valerie Conroy '67
 Jacqueline K. Cooke '12
 Sara J. Corcoran '02
 Mary F. Cordato, Ph.D. '71
 Vinny Corrao, P'15
 Alfred Correa '05
 Matthew Corridoni '13
 Ryan Corridoni '15
 Barbara Scannell Corrigan '66
 Francene Conroy Costello '60
 Nicole Cotugno, P'17
 Suzanne Devlieger Coursen '74
 Jeanne "Bamby" Colgan Craig '57
 Anne Morrissey Cressotti '66
 Maureen O'Leary Crinnion '57

Franc Antonio Crisafulli '03
 Marion Haggerty Crowley '58
 Milagros Cruz '15
 Pansy E. Currie '05
 Alyce Mollicone Cusano '01
 Claire Czerniuk '11
 Kathryn A. Dadukian '80
 Patricia Dalley '77
 Anita Cattone Dalton '63
 Allan and Claire Damon
 Margaret Buhl Dandola '70
 Madeleine E. Dauer, P'14
 Elizabeth Dauer, P'14
 Devyn M. Davis '14
 Mr. and Mrs. Kenneth C. Davis, P'09
 Bernard and Susan Davis
 Kimberly J. Davis
 Cynthia de Ben '91
 Fabian L. De Saint Juery '96
 Elsa de Santos '53
 Thea C. de Sousa '91
 Judith Harvey De Vries '65
 Sarah S. DeBiase '08
 Mary Brew Deegan '50
 Jeanmarie DelCore
 Carlos A. Delgado '04
 Rosemarie La Villa D'Elia '65
 Meghan A. Dengler '13
 Katherine Denton '08
 John J. Deola '00
 Yvette Deriberprey '95
 Patricia Asaro Desiano '66
 Eileen O'Leary Devine '57
 Jane Devine '66
 Donna Devlin '72
 Gary and Tracy Deysher, P'15

Paula Giancola Di Cunto '56
 Eileen Mosher Diano '81
 Vanessa I. Diaz '04
 Clarissa R. Diniz '03
 William and Teresa Dionisio, P'12
 Gail Weber Dipasquale '77
 Zeneida A. Disla-Thorne '89
 Brian Dochney '04
 Teresa Dolan, P'15
 Ann Mackey Donohue '64
 Heather N. Donohue '99
 Meghan S. Doran '07
 Helene Dorfman
 Franchelle S. Dorn, P'14
 Holly M. Dougherty '09
 Sheryl Henry Douglas '70
 Tara B. Douglas '93
 Cynthia Griffin Doyle '62 and
 Laurence Doyle
 Margaret McMahon Dreher '56
 Kathleen Drescher '05
 Kimberly Durand '13
 Luz D. Durso '98
 Vera Dvorski '12
 Catherine Sweeney Eagan '84
 Julie M. Edelstein, P'93
 Cheryl Jack Ehrlich '04
 Joan L. Ehrlich and
 Robert W. Deigh, P'15
 Lynne Einhorn
 Brie Eley '03
 Joyce Biggers Ellinghaus '61
 Ronald Emile '14
 Congresswoman Robin Emswiler
 Christina Handy Endicott '87
 Kathleen E. Ercole, P'15



WHY I GIVE

I GIVE BECAUSE

"MMC was home to me at a critical moment in my life and development. It's still home. The education, individual attention, and guidance that I received at MMC were invaluable."

—DR. JOSHUA SHERMAN '00

Consecutive donor *Deceased

FISCAL YEAR 2015 GIFTS & PLEDGES

DONORS (Continued)

Marian F. Erdal
 Brett and Mariann G. Ernst, P'13
 Paola Espinosa '11
 Azalee Evans '73
 Rosalind Incorvia Evans '60
 Donna M. Everitt '88
 Ramona Rodgers Faoye '83
 Mary Ann Carney Faraguna '74
 Delia Cairney Farrell '83
 Nancy Arbusto Fazio '70
 Toni M. Femia, P'16
 Loraine Daniels '84
 Maria C. Fernandez '80
 Mariel A. Fernandez '06
 Joan Bifulco Ferrari '73
 Eileen Ferreira '72
 Nancy Kelly Fetherston '63

Beth A. Fick, P'15
 Janet L. Filemyr '87
 Kimberly Fiordimondo '01
 Natalie R. Fischer '08
 Elizabeth Mahan Fister '76
 Mary O'Connor Fitzmaurice '78
 Jessica Fitzpatrick '03
 Eileen Daly Fleck '66
 Lindsay A. Fleege '04
 Olivia Radda Foley '62
 Caryl L. Foote '10
 Anne Marie Foran '90
 Dr. Andrea Foster, Ph.D. and
 Steven Katz, P'16
 Eric Foster '05
 Jennifer J. Founds '15
 Mary C. Fox '54
 Lois M. Franco
 Jessie M. Franklin '05

Laury P. Franks
 Timothy P. Frew, P'17
 Dr. Elisha Blond Frye
 Peggy P. Fung '03
 Paul and Donna Funicello, P'16
 Jeanmarie Furman '84
 Maureen Coyne Gage '80
 Rosanne Hoare Gallagher '82 P'13
 and John Gallagher
 Lynn Gallagher '66
 Desiree V. Gallardo '10
 Elizabeth Gans '87
 Eileen Donnelly Garbe '69
 Denise Garcia '03
 Noel R. Garcia '12
 Ellen Garvey
 Diane Drennan Gaughan '74
 Jacqueline M. Geffke '87
 Barbara Gentile '77

Malcolm X. George '98
 Fatima H. Georges '02
 Stephanie Georgiadis '15
 Marie McAvoy Gibson '58
 Christopher and MacAire Gigler, P'17
 MacAire Gigler, P'17
 Roseanne Spiess Giles '64
 Denise and James W. Glass, P'17
 Lilly Heljan Glass '82
 Patricia Murphy Gmerek '59
 Betty A. Godden, P'16
 Joan Lorenzoni Goldbrunner '72
 Lynn M. Goldstein '91
 Margaret Doherty Gonzalez '87
 Jason T. Goodman '00
 Marcia Gordon '88
 Linda S. Goropeuschek '75
 Donna LoCastro Gouin '71
 George Gountas

Margaret A. Gourdine '83
 Holly Gover '11
 Maura E. Grady '14
 Spencer K. Grammer '12
 Louisa T. Granger '10
 Brittany L. Granoff '14
 Graywolf Consulting
 Carol A. Green '71
 Kelly A. Green '04
 Colton Green '06
 Margot Green
 Jessica Greenberg
 Malcolm S. Greene '03
 Suzana Greene '06
 Marion L. Greenhalgh, P'15
 Ashley Greer '07
 Frances Rumore Greifenberger '75
 Hazel V. Dyer Grey '76
 David T. Grilli '12
 Dawn Groh '97
 Julie J. Groth '13
 Lauren A. Groves
 Leslie Grubler
 Shannon Young Grumet '99
 Kara R. Gurrieri '12
 Phyllis Sgueglia Gwatkin '67
 Nora Coyne Hahn '63
 Manal F. Hammad '83
 Janine Handfus '90
 Catherine Cronin Harris '67
 Kelley A. Harris '11
 Mehurlie Eckles Harrison '75
 Kristen Haskell '05
 Maura Egan Hatchette '77
 Rosemary Guglielmo Heckman '70
 Amy Bradel Heiles '95

Marguerite Brassel Heithaus '52
 Marsha Helmstadter
 Marcela Henao '05
 Anita Hennessey '85
 Kathryn M. Hennessy '12
 Robert and Mandy Hensell, P'14
 Maritza Hernandez-Cahill '03
 Joan Finn Higgins '50
 Gina M. Hines '14
 Chantelle C. Hirose, P'16
 Melissa R. Hirsch '14
 Jillian Hmieleski '08
 Catherine Hockstein '90
 Jeffrey R. Hodder '08
 Cathleen Quinlan Hodgson '86
 Anne M. Hoffmann '96
 Michelle Prevost Holland '94
 Casey Hollister '14
 Aslaug Homar '89
 Joanne Horgan '76
 Kathryn Droge Horowitz '74
 Susan Lovaglio Hudick '78
 Joan Barry Hughes '55
 Laurie Huryk, P'18
 Christian P. Iannucci '08
 Patricia Dehler Igoe '54
 Giles P. B. Indic '11
 Susan Inniss '95
 Dr. Ann Jablon
 Debora Washington Jackson '93
 Joanne Ciske Jacobs, Ph.D. '69
 Sandra Jacobs '06 and
 Morton Jacobs
 Holly Holland Jahshan '03
 Charles and Fredrica Janson, P'13
 Lorraine Orobello Jerome '70

Adelaide M. Johnson '84
 Casandra L. Johnson '06
 Holly M. Jones '12
 Robert E. Jones '05
 Jamal Joseph '05
 Priya Joshi
 Margaret Kamowski
 Kamowski-Shakibai '01
 Meg Kane-Smith '81
 Paula Kapotes '85
 James Karcher, P'15
 Debra Katz, P'18
 Linda B. Katz
 Tova Kaufman
 Paul and Barabara Kausch, P'16
 Eileen McDowell Kavanagh '71
 Karen Kayton
 Patricia Kazas '84
 Mark W. Kegans, P'15
 Bernadette Kelly '93
 Brigid Kelly '04
 Donna and Brian Kenendy
 Laurenthia S. Kennedy '94
 Patricia T. Kennedy '95
 Mary Phelan Kerrigan '57
 Paula Kerrigan-Disanza '67
 Kristen L. Ketron, P'17
 Deborah and Henry P. Khost, P'13
 Catherine Dunn Kiley '54
 Maureen Conway Killackey '58
 Kassie Kilpatrick Kilpatrick '04
 Allison C. Kimmel '10
 Carol Ann Willard King '90
 Maia King
 Terry Kinloch '83
 John S. Kinzey '11

Randy and Fran L. Kirsch, P'14
 Michael Kirsch '13
 Laura P. Kivlen '06
 Melanie Klein, P'18
 Mary Ann Beins Kocornik '56
 Hannah Kolbo '05
 Dorothy Yee Kong '63
 Kenya Kotright '05
 Vincent J. Koves '14
 Joan Kraisky '97
 Jeri J. Krassner '85
 Alice B. Krauss '81
 Jolanta Kulpa-Gubernat '67
 Chloe La Branche '12
 Theresa La Marca '74
 Barbara Labant, P '10
 Linda M. Labash, P'16
 Talat Ladson '01
 Sonam Lama and Bardour Tulku, P'15
 Rena Percell Landa '89
 Jessica R. Lane '06
 Bruce Sloman and Priscilla Lane, P'08
 Daniel Langan '12
 Helen Lanigan '74
 Fatima Polo Laperle '74
 Claire Larosa '86
 Richard and Laura Latrenta, P'13
 Eleonora Lecei '00
 Florence H. Lee '49
 Mary E. Lee '65 *
 Mireille Leonard '87
 Yanick Leonard '96
 Arianna Lepore '06
 Jessica and Lance Lermsider, P'14, P'17
 Merline Leslie '05
 Eliza Levy '12

Consecutive donor *Deceased



FACULTY ACCOMPLISHMENTS

UNDERSTANDING THE CHEMISTRY OF PAIN

Associate Professor of Psychology, Biopsychology and Behavioral Neuroscience **Deitra Hunter-Romagnoli's** most recent co-authored article was featured in *Cytokine* (April 2015, Vol. 2), the official journal of the International Cytokine and Interferon Society.

"My work at The New York State Psychiatric Institute at the Columbia University Medical Center allowed me to build on my background knowledge in pain processing and inflammatory responses to include an understanding of the ways pain processing differs in infants, another vulnerable group often omitted in pain studies," notes Professor Hunter-Romagnoli.

According to Professor Hunter-Romagnoli, it was once believed that infants did not feel pain. This is no longer the case, but the lack of knowledge in the way infants process pain has led to ineffective approaches and limited tools to treating children in pain. Results from Professor Hunter-Romagnoli's work suggest that what works for adults doesn't work in infants, and better treatments must be sought. Professor Hunter-Romagnoli adds: "At MMC, my research focus is expanding to include music therapy as an alternative to pain reducing drugs."

FISCAL YEAR 2015 GIFTS & PLEDGES

DONORS (Continued)

George and Karen Lewis, P'14
 Arthur and Bria Lewy, P'12
 Christina M. Liccione '96
 Patricia Lindstrom '74
 Kelsey Logan '15
 Jeanne Longueira, P'17
 Barbara O'Dwyer Lopez '56
 Julietta Lopez '12
 Nonceba L. Lubanga '75
 Vicki Lynn and
 Henry W. Hagendorf, P'16
 Anna Marino Lyons '75
 Joan Parlapiano Macellaro '59 and
 Charles Macellaro
 Natalya Fedorova MacWilliams '97
 John and Venus Maggio, P'15
 Kathleen Malanaphy
 Constance Malandri '79
 Dorothy Petrek Mannarino '74
 Alison Manning '08
 Robert S. Manzo, P'13
 Angela Manzolillo '05
 Lia Margolin
 Lia Lucchesi Marmo '71
 Patricia Marron '90
 Sherri S. Marshall, P'17
 Norma Dobson Marshburn '87
 Awilda Marte '11
 Sabina Martelli '70
 Anne Wacewiz Martin '56
 Jacqueline A. Martin '78
 Antonia Ferraro Martinelli '98
 Josefina Martinez-Garo '71
 Michael and Kathleen Martini, P'15

Vita Tallat-Kelpsa Matusaitis '64
 Dawn and Warren L. Maybloom, P'17
 Brooke Boschen McAnaney '03
 Deirdre Dundon McCormack '68
 Sarah M. McDermott '99
 Christina McDonald '15
 Robert and Monica McDonald, P'15
 Margaret McElhone '63
 Susan Reiss McGaulley '71
 Sheila McGayhey '60
 Allison McGoughran
 Barbara Russo McGrath '60
 Jared W. McGuire '04
 Jane A. McQuade '96
 Edna Woodley McRae '90
 Patricia A. Meding '75
 Konstantin Medyuk '03
 Robert and Patricia Meehan, P'16
 Christine Nevin Meloro '74
 Sherryanne H. Meyer, P'15
 Viveca Meyer and Peter Beaman, P'15
 Janet Thurkow Micari '72
 Linda Miele-Cavallaro '83
 Hermine '77 and Sidney Migdon
 Gregory Miller, P'18
 Linda Miller-Roseman '91
 Kristie M. Milligan, P'17
 Mary V. Minstrell '64
 Caitlin E. Mintz '12
 Janeanne Foley Mitchell '61
 Jennifer J. Mittica '11
 Angela and Charnett Moffett, P'14
 Carolyn Hug Mollica '65
 Kathleen'05 and Frank Monteleone '04
 Marie-Claude Monty '90
 Joanne Moore '65

Joseph C. Moran '04
 Kathleen Moran '82
 Lorraine Malley Moran '73
 Ava Moses
 Kit Ying Mui '05
 Andrew and Joan Mullings, P'15
 Lauren Kalan Munden '05
 Eleanor Baden Murphy '64
 Margaret M. Murray '03
 Joseph A. Muto '05
 Susan Bartnick Naclerio '71
 Bernadette A. Nader '86
 Diana Kithcart Nash '89
 Mahwish Natalia '03
 Marija Masionis Navickas '65
 Bruce and Wendy Neckels, P'14
 Michelle Cantero Needle '73
 Diana I. Negron '82
 Kristin C. Nelson, P'17
 Louise Sheehan Nguyen '97
 Arlene Rhodes Niles '56
 Jeanette Norris Ph.D. '74
 Martina Nunez-Rojas '82
 Mrs. Elaine P. Okonkwo '73
 Ulla Pasanen Okos '88
 Jacqueline Reilly O'Neil '56
 Ann M. O'Neill, P'16
 Mary A. Breen O'Neill '74
 Patricia Kennedy O'Prey '63
 Ana Muriel Orihuela '12
 Maureen Quinn O'Rourke '59
 Sean O'Rourke '11
 Deborah M. Ortega, P'16
 Kevin J. Ostrander, P'17
 Lisa Perkins Ougourlian '88
 Barbara Gehan Packwood '53

Waleska Padillo-Castellar '01
 Barbara DiAgostino Paesano '79
 Deborah A. Palmer '02
 Marjorie Palmer '60
 Lea M. Palmieri '07
 Camille Difrisco Pandolfelli '57
 Dr. Cheryl Paradis '79
 Anita Gammichia Parmer '76
 Ayelet Pasternak '18
 Alexandra J. Paszkowski '08
 Clare C. Patalkis '80
 Anna Patruno '14
 Barbara E. Patterson '82
 JoAnne "Bunny" Adams Pavia '54
 Jeanne Pearson-Gray '80
 Joanne Pellegrino, Esq. '66
 Geraldine McDermott Pender '68
 Patricia E. Permakoff '75
 Ronald D. Peters
 Ann Winters Petrovits '88
 Dorothy A. Pfeffer '57
 Nicole Philippidis '95
 David Phillips '03
 Donna M. Piccinonno, P'17
 Ramona Papke Pitera '93
 Elsie De Jesus Pizarro '90
 Chelsea Pollack '13
 Barbara Hoppe Pollock '86
 Taylor Porcelli '12
 Dr. Marie Heneghan Postner '62
 Eileen Kelly Potash '54
 Luticia Povod, P'16
 Francine Bader Prager '76
 Frances Prelli '58
 Hannah J. Pressler '13
 Amanda Presson

Kathleen Feuerstein Proud '86
 Joan E. Purcell '54
 Nanette J. Purcigliotti '94
 Deanna O. Quevedo '75
 Cathy Quinn, P'18
 Ellen Quinn
 Mary Quirk '55
 Robert Quittner, P'14
 Pamela Rainey '97
 Frances Cassara Rajotte '68
 Maxwell S. Realyvasquez
 Anna Karcinsky Reddington '87
 Robert A. Reid, P'15
 Sara Reidy '14
 Jennifer Reif
 Marjorie Gleeson Reilly '60
 Gail Riley Reilly '58
 Mary Reinhardt
 Virginia Smith Rhatigan '66
 Nina M. Ricco '69
 Mary Doran Richards '58
 Peggy M. Richards '84
 Muge Rinehart, P'13
 Holly M. Rittweger '14
 Robert M. Robinson '13
 Jeanette E. Rochester '75
 Alicia M. Rodriguez and
 Eduardo C. Sahagun, P'17
 Susan A. Roehrich '90
 Patricia M. Rogers '75
 Rachel Munoz Romero '81
 Kathleen Gill Roodhouse '68
 Arleen and Scott M. Rosenberg, P'17
 Elizabeth Lazarich Rossano '67
 Helen C. Noonan Rossler '58
 Anthony T. Rotondaro '14
 Linda Rotondo '75

Rita and John Rozzi, P'16
 Jean Sonnenblick Saklad '78
 Louis and Diane Salerno, P'13
 Ann Connelly Sande '73
 Patricia Fillo Sands '66
 Eileen Sanford
 Claudia P. Saraceno, P'13
 Marilyn A. Sauline '76
 Marilyn and Harold J. Savard
 Missy Savard
 Alice Bruchhausen Schenck '77
 Danielle Schlough '15
 Eleanor M. Schmauser '84
 Joanne Ribaud Schneider '69
 Georgeanne Teutschman Schopp '68
 Dorothy Schorrman
 Joan Wright Schuster '68
 Mary Ann Sears-Prunty '51
 Fred and Susan Senatore, P'13
 Nicholas J. Senn '06
 Hetal Shah
 Mary Flanagan Shanahan '82
 Dr. Gabrielle Shapiro
 Roslyn Shapiro '96
 William Shea, P'18
 Richard Sheldon
 Denah Shenkman '05 and
 Sandy Shenkman
 Ann Crehan Sheridan '96
 Natalie Shick '04
 Deborah Bevan Shinner '72
 Malin M.B. Kallberg-Shroff '98
 Teresa M. Signorelli, Ph.D.
 Cheryl B. Silver '89
 Joyell Simmons '04
 Merle L. Simon '04
 Virginia A. Simpson '81

Kevin R. Sink, P'17
 Theresa Oifer Sinopoli '73
 Margaret Kapala Sisko '74
 Angela M. Sisto '80
 Don and Kimberly Skewes, P'16
 Mr. and Mrs. Ronald B. Skolink
 Claire Fitzgerald Smith '59
 Ethel Smith '75
 Theresa Mueller Smith '77
 Tonya J. Smith, P'17
 Claudette James Snitiker '62
 Mary L. Solliday '75
 Dr. Linda Z. Solomon
 Frank Sommers, P'18
 Ronald and Patricia Sorensen, P'13
 Kathleen M. Spaldo '63
 Norma Stanford '61
 Chrishena B. Stanley '02
 Megan C. Stanton '05
 Kelly Stauffer '15
 Rebecca Steckler '10
 Peg Unger Sternfeld '69
 Linda Stone, P'18
 Jay Stribling, P'15
 Marguerite Sutherland '80
 Monica B. Swenson, P'16
 Grace Szczupak '15
 The Talbots, Inc.
 Kimberly Tarbell, P'18
 Mrs. Ellis Taussig-Phyfe '90
 Glenn and Anneliese Taylor, P'13
 Dennis G. Terez
 Yvonne Thomas '83
 Joann Thompson
 Dawn M. Thompson '99
 Justin P. Thompson '15
 Time Warner Inc.

Consecutive donor *Deceased



FACULTY ACCOMPLISHMENTS

INNOVATING ACROSS DISCIPLINES
 Assistant Professor of Communication and Media Arts **Edrex Fontanilla** has spearheaded the creation of the Innovation Lab at MMC.

This new collaborative space encourages a spirit of inventiveness and asks students to think flexibly, to adapt nimbly, and to problem-solve creatively. It is inspired by many incubation and maker spaces and "hacker labs" in the U.S. and abroad that dissolve disciplinary boundaries in order to respond to the global challenges of today.

Professor Fontanilla says he hopes that students will "begin fusing methods from different disciplines to uncover new ways of communicating effectively." He observes, "I imagine students exploring questions such as, How can we capitalize on what we know about embodied cognition and perception to create unique experiential moments for our viewers? Can I produce content using virtual reality platforms—like the Oculus Rift—for digital journalism?"

FISCAL YEAR 2015 GIFTS & PLEDGES

DONORS (Continued)

Regina P. Titus '82
 Julie A. Tokash '01
 Mr. and Mrs. Paul A. Tomasofsky, P'17
 Dina Pagliughi Tornabene '72
 Paul Treyman
 Nicole M. Tuck '02
 Bettyann Persico Tudino '68
 Barbara Burke Tymann '61
 Bernice McMillan Tyson '81
 Judith K. Ungaro, P'16
 Stephanie T. Valada-Viars '05
 Hope Bahlert Valbuena '83
 Eduardo and Nyree Valdes, P'16
 Nyree G. Valdes, P'14
 Paula Valentini '03
 Elizabeth Hallowell Valentino '59
 Tracy Van Fleet, P'17
 John and Beth Van Norstrand, P'15
 Marcia Van Vechten '81
 Brian Veith '09
 Gabrielle Van Nieuwenhuysen Vereecke '59
 Eileen Vetri '86
 Evangelos Vidalis
 Sr. Catherine Vincie '73, RSHM, Ph.D.
 Jeanne M. Viviani '68
 Joanne Schuh Vorburger '65
 F.B. "Lee" M. H. Wadelton III '83
 Sandra Austin Wakefield '03
 Veola Waldon '98
 LaVerne O. Walker '00
 Olympia Smith Walker '75
 Yvonne Martinez Ward '78

Elizabeth Kelly Warehime '73
 Ronnie Guariglia Warren '69
 Melody Waters '11
 Cami P. Weber, P'17
 Arnold and Amy Susan Weintraub
 Rebecca A. Weintraub '03
 Clive L. Welsh '09
 Glen Wenrich, P'17
 Alicia F. White '95
 Beryl E. White '83
 Paige M. Whitebread '13
 Richard '92 and
 Courtney '90 Whittington
 Stephen J. Whitty and
 Jacqueline B. Cutler, P'16
 Lynn W. Wildman
 Melika Williams '02
 Patricia A. Williams '75
 Alexis M. Wilson '17
 Lolita Colson Wood '73
 Rodica Woodbury, P'14
 Dolores Johnson Wright '60
 The Wright Family, P'14
 Marjorie Conroe Wynne '62
 Richard and Sheila Yacobush, P'11
 Dennis and Kristine Yeager, P'16
 Stacy M. Yokoyama '05
 Deborah L. Youngdahl '07
 Elaine Yudkovitz, P'14
 Jason T. Yuhas '11
 Sherwin M. Zanjarian '03
 Muriel MacDonald Zarb '64

TRUSTS, FOUNDATIONS, & CORPORATIONS

804 Lexington Avenue Restaurant Inc.
 Aetna Inc.
 AHI Travel
 Joseph Alexander Foundation
 American Portfolios Financial Services
 American Society For Biochemistry and Molecular Biology, Inc
 Rose M. Badgeley Residuary Charitable Trust
 The Arun I. & Asmita Bhatia Family Foundation
 The Dan and Gloria Bohan Foundation
 The Brown Foundation of Houston
 The Carson Family Charitable Trust
 The Charitable Foundation of the Burns Family, Inc.
 Chartwells Dining Services
 Chipotle
 Citizens Bank
 Cooper and 6th Property, LLC
 Demarest Lloyd Jr. Foundation
 Educational Housing Services
 General Electric Foundation
 General Plumbing Corp.
 The Generosity Trust
 Givenik LLC
 The Glenmede Trust Company, NA
 Google Matching Gifts Program
 Gorton and Partners, LLC
 Graywolf Consulting
 Greenberg Traurig LLP

HiTouch Services
 Jepshon Educational Trusts
 Willis & Nancy King Foundation
 KPMG, LLC
 Eugene M. Lang Foundation
 The Lowerre Family Charitable Trust
 The Marshall Family Foundation, Inc.
 McNulty Outdoors, Inc.
 MJM Productions
 New York City Dance Alliance
 Henry E. Niles Foundation, Inc.
 Once For All, Inc.
 Presbyterian Women of Hitchcock Church
 Ramona's Model & Talent LLC
 Religious of the Sacred Heart of Mary
 The Rudin Foundation, Inc.
 Rowe Family Foundation
 The Selz Foundation, Inc.
 The Simons Foundation
 SYMMYS - One More Reason
 The Talbots, Inc.
 Time Warner Inc.
 Tracy Associates
 UBS Financial Services Inc.
 U.S. Security Associates, Inc.
 The Waldorf Family Foundation
 Walk4Hearing
 Arthur Williams Residuary Trust
 Joanne Woodward Fund

WHY I GIVE

WE GIVE BECAUSE

"We believe in a Marymount Manhattan College education. We appreciate the excellent professional preparation our daughter is receiving in the Theatre Arts, but we know that she's also receiving a solid liberal arts education, and that's important to us. We donate so that as many students as possible can have a similar opportunity."

—SCOTT & DEBORAH RECHLER, PARENTS OF GABRIELLE '17

TRIBUTE GIFTS

In honor of Myra Anderson '15
 John and Myra Anderson, P'15
 In memory of Sr. Rita A. Arthur
 Thomas and Lydia Gray
 In honor of Victoria Bachan '13
 Lisa Bachan, P'13
 In honor of Katherine Bailess
 Robert and Natalie Bailess, P'11
 In honor of Christine Baird '16
 Richard K. Baird, P'16
 In memory of Elizabeth
 Schneider Belger '56
 Esther Liebers Belger '56
 Marian F. Erdal
 Kerstin and James Winkler
 In honor of Amanda Berman '11
 John and Michele B. Berman, P'11
 In honor of Carol Berman '13
 Anonymous
 David and Linda Alhadeff
 Jessica Greenberg
 Karen Kayton
 Donna L. Kennedy

Alvin I. Lebensfeld
 Ronald and Debra Peters
 Eileen Sanford
 Lynn Surry
 In memory of Louis Blangiardo
 Joan Blangiardo Caputo '77
 In honor of Jay C. Blubaum '14
 Linda M. Labash P'14
 In memory of J.W. Bordeau
 Diane Mihnevich '82
 Antonio E. Suarez '98
 In memory of Joan Garrity Burke '58
 Marion Haggerty Crowley '58
 In memory of Thomas Burns
 Joan Prendergast Burns '62
 In honor of Michael Burns
 Deborah Savarino Cohen '80
 In memory of Adella Butts
 Marilyn Henry Howell
 In memory of Candida Connolly
 Joanna A. Salviani '66
 In honor of Sophie M. Curtis '17
 Marcy Monroe, P'17

In honor of Colin Davis '10
 Joann and Kenneth C. Davis, P'10
 In memory of Dr. Mary T. Delahanty
 Janet Palmieri Benestad '69
 Irene Schaefer '63
 In memory of A. Dellano
 Josephine B. Dellano '68
 In memory of Nicholas Diano
 Eileen Mosher Diano '81
 In memory of Christy M. Doyle
 Maria R. Capucciati '81
 In honor of Sr. Brigid Driscoll '54
 Patricia Dehler Igoe '54
 In memory of Janet Drucker
 Myra Malkin
 In memory of Martha Emanuel
 Nhora Cortes-Comerer '71
 In memory of Sr. Teresita M. Fay
 Maria DeInnocentiis
 Margaret Duffy
 Carol L. Jackson, Ph.D. and
 Emile Schreiber
 Judith L. Robinson '90 and
 Stephen Brodsky

In honor of Anthony J.
 Fiorella, Sr. Esq., Assunta M.
 Fiorella, Victor
 D. Russo, Sr. & Josephine
 Gallagher Russo
 Dr. Christine Fiorella Russo '53
 and Victor D. Russo
 In honor of Marion Flannery
 Anne C. Flannery '73
 In honor of Mary R. Fleischer
 Kerry M. Donohue '97
 In memory of Ita Ford
 Barbara Gerard de Zorzi '64
 In honor of Irena Kelpfisz
 Ellen Garvey
 In memory of Mother
 Catherine Garvey
 Patricia Fillo Sands '66
 In honor of Katharine
 Jamieson Haight '14
 Susan Beyrle, P'14
 In honor of Rose Kazanowski '16
 David W. Kazanowski P'16 and
 Theresa Kazanowski

FISCAL YEAR 2015 GIFTS & PLEDGES

TRIBUTE GIFTS (Continued)

In memory of Margaret D. Kenny '54
Denise Duross Beckerle '54
In memory of Mr. & Mrs. Jenó Kuria
Veronika Kuria Crane '64
In honor of Maureen Lally '60
Dr. Maureen Cahill Grant '60
In memory of Mary I. Larkin '57
Patricia Rita Meehan '57
In honor of Taylor A. Lewis '14
George and Karen Lewis, P'14
In memory of Julius & Selma
Lowenstein-Hermann
Janet L. DeCastro '77
In memory of Xolo Lubanga
Nonceba Lubanga '75
In memory of Harry & Josie Lynch
Louise Lynch Galleshaw '70
In honor of Jacqueline
Von Hook Lynch '94
James H. Lynch
In memory of Maryellen
McManus Maguire '58
Elinor Buckley '58
In memory of Sr. Colette Mahoney
Sr. Joan R. Catherwood, RSHM
Mark Gil '75
Myra Mahoney Goggins '59
Doreen Soden McDonough '74
In memory of Winifred J. Malley
Lorraine Malley Moran '73
In honor of Frank Mastoloni
Maryann Paradise Mastoloni '52

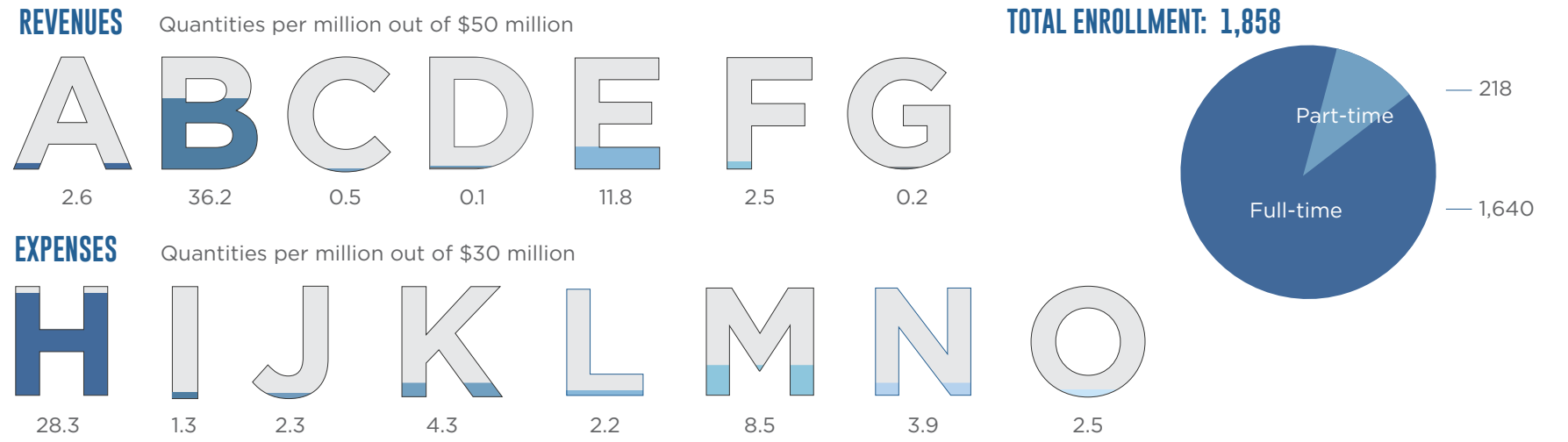
In memory of Raymond Mathis
Sandra Cherone Mathis '62
In memory of Eileen McCants '62
Muriel MacDonald Zarb '64
In memory of Sr. Raymund McKay
Marianne Githens '56
In honor of Dr. Cathleen
McLoughlin '60
Dr. Maureen Cahill Grant '60
In memory of Khana Medyuk
Konstantin Medyuk '03
In memory of Rose Anne
Facciola Mullaney
Carol Ephraim Wise '62
In memory of Mary Ellen M. Nix '62
Susan Filippi O'Shea '62
Carol Ephraim Wise '62
In memory of Eileen M. Norton '61
Alberta Candia Begley '61
In honor of the Office of
Institutional Advancement
Nava R. Siltón, Ph.D.
In memory of Eric Olson
Brigidann Lloyd Turadek '70
In honor of Natalie G. Ortega '16
Deborah and Brad Ortega, P'16
In memory of my parents
Edwina Gould Yank '53
In honor of Alanah Rafferty '14
Helen and Brian Rafferty, P'14
In honor of Religious of the
Sacred Heart of Marymount
Manhattan College
Maria DelInnocentiis

Mireille Leonard '87
Barbara O'Dwyer Lopez '56
Joan Parlapiano Macellaro '59
Hermine '77 and Sidney Migdon
Sr. Jacqueline A. Murphy '55
Diana Kithcart Nash '89
In honor of Rose Rinella
Constance Rinella Booth '68
In honor of Lee Roberts
Andre Hunter
In memory of Mill Roseman
Linda Miller-Roseman '91
In memory of Sr. Judith A. Savard
Virginia Gribbon Hogan '96
Marilyn and Harold J. Savard
Mary L. Solliday '75
In honor of Erin Shanley
Susan and John M. Shanley, P'15
In honor of Judson R. Shaver, Ph.D.
Joan Morel Brakman '53
Laury P. Franks
Roy Miller
Mrs. Oren Root
In memory of Patricia Shinohara
Arlene Rhodes Niles '56
In honor of Audrey A. Simons '10
Marilyn and James Simons, P'10
In memory of Ana Rosa Simpson
Annabelle G. Simpson '69
In memory of Dr. Gurchar Singh
Noelle O'Callaghan Morrison '95
Martha Palubniak '90
In memory of Francis Telsey
Ellen Parlapiano Leppa '62

In memory of Eugene Treyman
Paul Treyman
In memory of Richard W. Vawter
Dorothy Ehrlich Vawter '84
In honor of Kimberly Vieira '15
Robert and Virginia Vieira, P'15
In memory of Alice P. Vorbach '62
Carol Ephraim Wise '62
In honor of Paul T. Walker
Robert P. Rittereiser
In honor of Molly Ward '15
Charles and Alice Ward, P'15
In honor of Rebecca Weintraub '03
Arnold and Amy Susan
Weintraub, P'03
In memory of Irene and
Michael Whalen
Sharon Whalen Leary '57
In honor of Jean P. Wilhelm
Anonymous
In honor of Treb Winegar
Anonymous
In memory of Laurrie Woodley
Edna Woodley McRae '90
In memory of my four
wonderful grandparents
Nava R. Siltón, Ph.D.
In memory of Dorothy Kelly
Kuveke Zuk
Maureen Kelly Zuk '63

Consecutive donor *Deceased

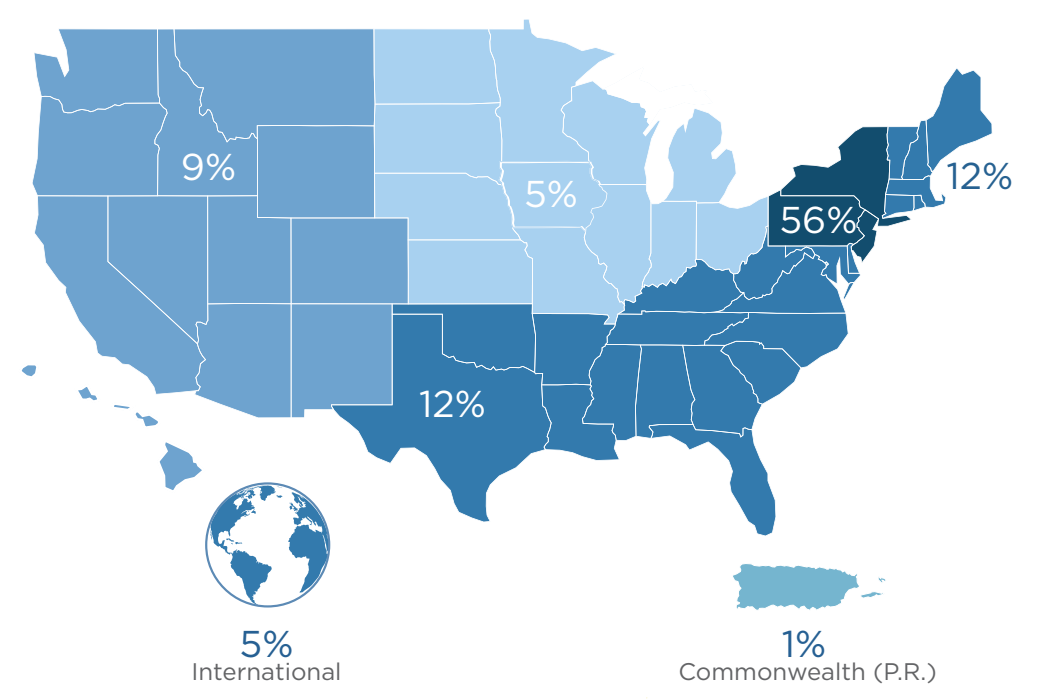
FINANCIAL STATISTICS FOR FISCAL YEAR 2015



FISCAL YEAR BALANCE \$742,515

A Gifts and Grants	2,623,972
B Net Student Tuition & Fees	50,026,171
Student Aid	-13,674,766
Tuition & Fees	36,351,405
C Government Grants	481,199
D Investment Return, net	96,628
E Auxiliary Enterprises ¹	11,812,302
F Funds Released by the Board of Trustees for Capital Projects	2,470,959
G Other	223,591
Total Revenue	\$54,060,057
H Compensation	28,279,579
I Academic Support	1,309,344
J Student Services	2,287,908
K Institutional Support	4,337,669
L Plant Operations	2,190,686
M Auxiliary Enterprises ²	8,538,720
N Depreciation and Amortization	3,902,677
O Funds Released by the Board of Trustees for Capital Projects	2,470,959
Total Expenses	\$53,317,542

ENROLLMENT BY REGION



¹ Auxiliary Enterprises: This title has been changed from Housing Revenue to Auxiliary Enterprises. This figure includes housing, college store, space rental, and food service (gross) revenue. Prior to FY15, the food service operation used to be reported at net and included in Other Revenue. College store and space rental revenue used to be included in Other Revenue as well. For comparative purposes, FY14 has been adjusted to include the changes made in FY15.
² Auxiliary Enterprises (including debt service): This title has been changed from Housing Expenses (including debt service) to Auxiliary Enterprises (including debt service). This figure includes housing, debt service, and the food service (gross) expenses. Prior to FY15, the food service operation used to be reported at net and included in Other Revenue. For comparative purposes, FY14 has been adjusted to include the changes made in FY15.



PLANNED GIVING: THE ROWLEY SOCIETY

The Rowley Society, named in honor of Mother Rita Rowley, RSHM, Ph.D.—the visionary founding dean of Marymount Manhattan College—is the recognition society for individuals who have made planned gifts for the benefit of the College. Plans include charitable gift annuities, charitable remainder trusts or charitable lead trusts, retained life estates, and life insurance policies. The Rowley Society also seeks to recognize those alumni and friends who have included Marymount Manhattan in their estate plans as a designated beneficiary of an IRA or similar program, or as the beneficiary of a defined bequest.

A planned gift to Marymount Manhattan is a wonderful way to provide support for the College and its mission while helping meet your own estate planning and philanthropic goals. Charitable gifts can extend your generosity well into the future, supporting students at the College for generations to come. A planned gift can even protect your assets, provide for your family, and guarantee you income for life.

We invite you to explore the various options and advantages of membership in The Rowley Society by visiting the Planned Giving website at www.mmm.giftplans.org. We are more than happy to provide you with additional information to help with your planned giving.

Kyle Nachreiner
Director of Annual Giving
knachreiner@mmm.edu
212-517-0454

Hugh Nurse made a charitable bequest of \$50,000 to create the Mary Nurse and Joyce Nurse '80 Scholarship Fund in honor of his wife, Mary, and daughter, Joyce. Pictured: Gregory Holder, Hugh Nurse's cousin and executor of his will, presenting President Kerry Walk with the bequest check for the Mary Nurse and Joyce Nurse Scholarship Fund in December 2015.

REMEMBERING DR. MARVELLE S. COLBY

This winter, Marymount Manhattan College lost one of its most dedicated faculty members, Professor Emerita Marvelle S. Colby.

Marvelle served for more than two decades as a member of the Business Management and Accounting Division, much of this time also serving as Division Chair. She authored or co-authored several books in her field, including a popular study guide titled *Introduction to Business*, published by HarperCollins in 1991. In 2007, a number of Marvelle's colleagues and former students collaborated to establish the Dr. Marvelle S. Colby Endowed Scholarship Fund as a tribute to her deep and abiding commitment to student learning. Contributions to her scholarship fund are ongoing.

Professor Emerita Marvelle S. Colby, Ph.D. was a valued—indeed, a beloved—member of the Marymount Manhattan community and is fondly remembered by all who knew her.



DONOR DINNER

The Marymount Manhattan College Annual Trustee Donor Dinner was held on December 8, 2015 at The Lotos Club in New York City. The beautiful evening recognized our most generous benefactors, and was a true celebration of their support in shaping the future of this great college.

1 | **Front Row (Left to Right):**

Hayley Lampart '16
Madelyn Baillio '18
Irene Albors Gonzalez '16
President Kerry Walk
Nicolette Shin-Serrano '17
Taylor Brauer '17
Olivia Mattsey '18

Back Row (Left to Right):

Brian Fender-Shirley '16
Matthew Marvin '18
Ian Fitzgerald '16
Ashton Corey '16
Anthony Ingargiola '16
Anthony Ieradi '18

2 | **Standing (Left to Right):**

Jerry Loughlin
Barbara A. Loughlin '70
Maggie Browning
Paul C. Lowerre '81
Thomas C. Clark

Seated (Left to Right)

Irene Gonzalez
Helen Lowe '55
President Kerry Walk
Abby Fiorella '83
Ursula Lowerre '17

3 | Edward Van Sadlers '95
Ronald J. Yoo

4 | Michael J. Materasso, P'14
Linda Basilice-Hoerrner '71

5 | Major Gifts Officer Robert Santiago
Helen Demetrios '73



MISSION & FOUNDING

Marymount Manhattan College is an urban, independent, liberal arts college. The mission of the College is to educate a socially and economically diverse student body by fostering intellectual achievement and personal growth and by providing opportunities for career development. Inherent in this mission is the intent to develop an awareness of social, political, cultural, and ethical issues in the belief that this awareness will lead to concern for, participation in, and improvement of society.

To accomplish this mission, the College offers a strong program in the arts and sciences for students of all ages, as well as substantial pre-professional preparation. Central to these efforts is the particular attention given to the individual student. Marymount Manhattan College seeks to be a resource and learning center for the metropolitan community.

Marymount Manhattan College was founded in 1936 by the Religious of the Sacred Heart of Mary (RSHM) as an urban extension of Marymount College in Tarrytown, New York. The College became independent in 1961 and coeducational and nonsectarian in 1971, and currently enrolls approximately 2,000 full- and part-time students.



MarymountManhattan

221 East 71st Street, New York, NY 10021

